


WAAS CH 61115 W28A	APP CRS 284°	Rwy Idg 8204 TDZE 5459 Apt Elev 5516
--	------------------------	--

RNAV (GPS) RWY 28

CENTRAL WYOMING RGNL (RIW)

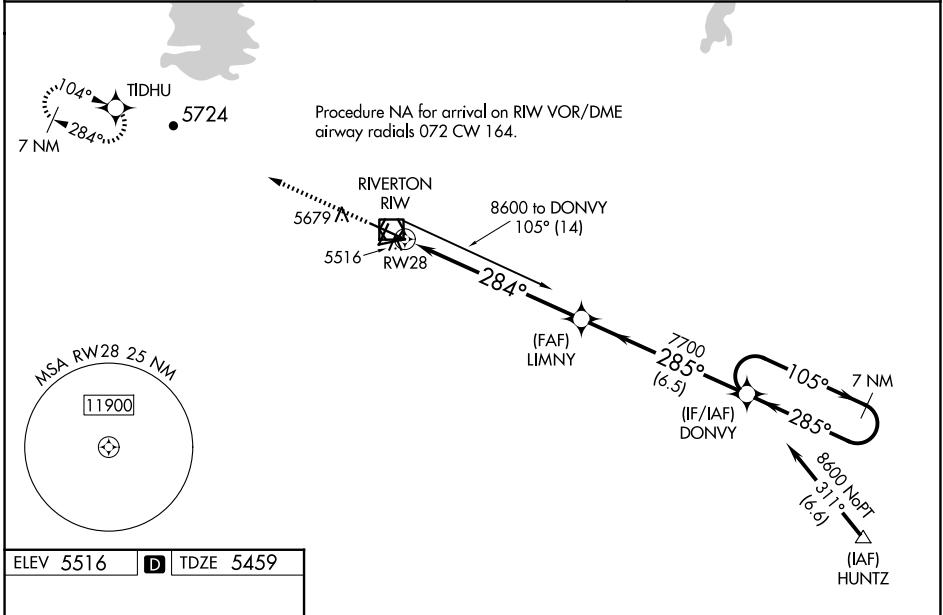
RNP APCH - GPS.

⚠ Baro-VNAV and VDP NA when using Lander altimeter setting. For uncompensated Baro-VNAV systems, LNAV/VNAV NA below -27°C or above 48°C. For inop MALSR, increase LNAV/VNAV all Cats visibility to ½ mile and LNAV Cat C and D visibility to 1 mile. When local altimeter setting not received, use Lander altimeter setting: increase LPV DA to 5713 feet, LNAV/VNAV DA to 5763 and all visibilities ½ mile; increase all MDA 60 feet and LNAV Cat C and D visibility ½ mile. For inop MALSR, when using Lander altimeter setting, increase LPV all Cats visibility to ½ mile and LNAV/VNAV all Cats visibility to 1 mile.

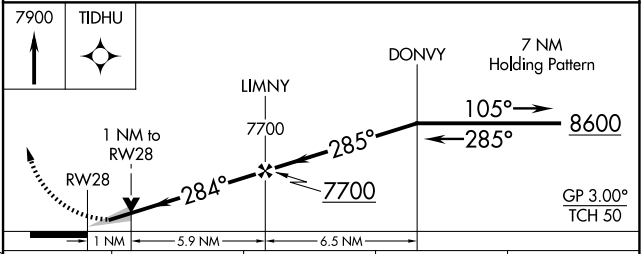
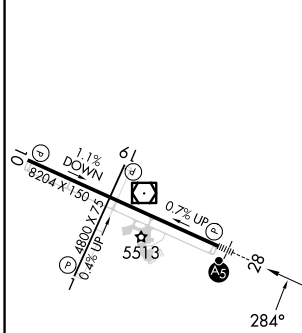
MALSR 

MISSED APPROACH: Climb to 7900 direct TIDHU and hold.




ASOS 121.425	SALT LAKE CENTER 133.25 285.6	UNICOM 122.8 (CTAF) 
------------------------	---	---



ELEV 5516	D	TDZE 5459
-----------	----------	-----------



CATEGORY	A	B	C	D
LPV DA		5659-½	200 (200-½)	
LNAV/VNAV DA		5709-½	250 (200-½)	
LNAV MDA	5820-½	361 (400-½)	5820-⅝	361 (400-⅝)
C CIRCLING	6000-1	484 (500-1)	6000-1½ 484 (500-1½)	6120-2 604 (700-2)

REIL Rwy 1, 10, and 19 
 MIRL Rwy 1-19 
 HIRL Rwy 10-28 

NW-1, 23 JAN 2025 to 20 FEB 2025

NW-1, 23 JAN 2025 to 20 FEB 2025