

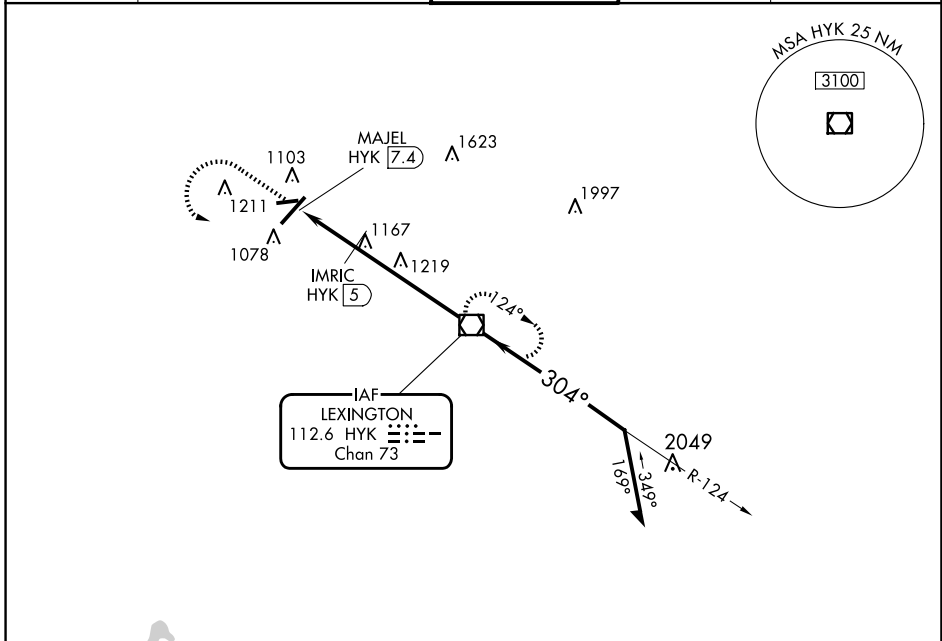
VOR/DME HYK 112.6 Chan 73	APP CRS 304°	Rwy Idg TDZE Apt Elev N/A N/A 979
---	------------------------	--

VOR-A
BLUE GRASS (LEX)

⚠ When local altimeter setting not received, use Frankfort altimeter setting and increase all MDAs 80 feet and visibility Cats C and D ¼ SM.

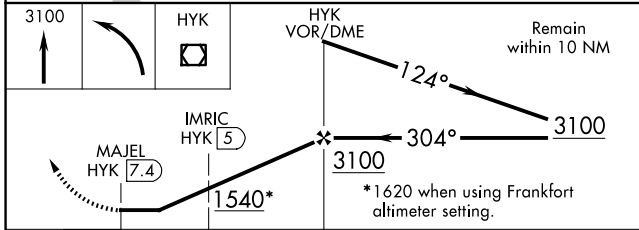
⚠ MISSED APPROACH: Climb to 3100 then left turn direct HYK VOR/DME and hold.

ATIS 126.3	LEXINGTON APP CON 120.15 259.3 120.75 298.9 (040°-220°) (221°-039°)	LEXINGTON TOWER 119.1 257.8	GND CON 121.9	CLNC DEL 132.35
----------------------	--	---------------------------------------	-------------------------	---------------------------

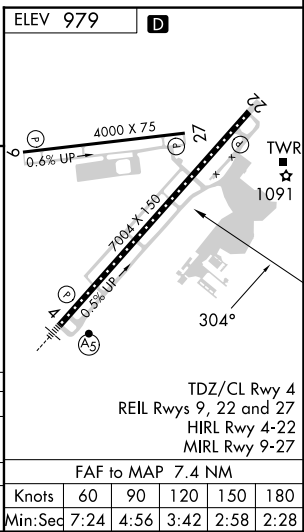


SE-1, 23 JAN 2025 to 20 FEB 2025

SE-1, 23 JAN 2025 to 20 FEB 2025



CATEGORY	A	B	C	D
C CIRCLING	1540-1	561 (600-1)	1540-1½ 561 (600-1½)	1600-2 621 (700-2)
IMRIC DME FIX MINIMUMS				
C CIRCLING	1460-1	481 (500-1)	1520-1½ 541 (600-1½)	1600-2 621 (700-2)



FAF to MAP 7.4 NM	Knots	60	90	120	150	180
	Min:Seq	7:24	4:56	3:42	2:58	2:28