

| | | |
|-------------|----------|-------------|
| APP CRS | Rwy Idg | 4558 |
| 074° | TDZE | 810 |
| | Apt Elev | 813 |

RNAV (GPS) RWY 7

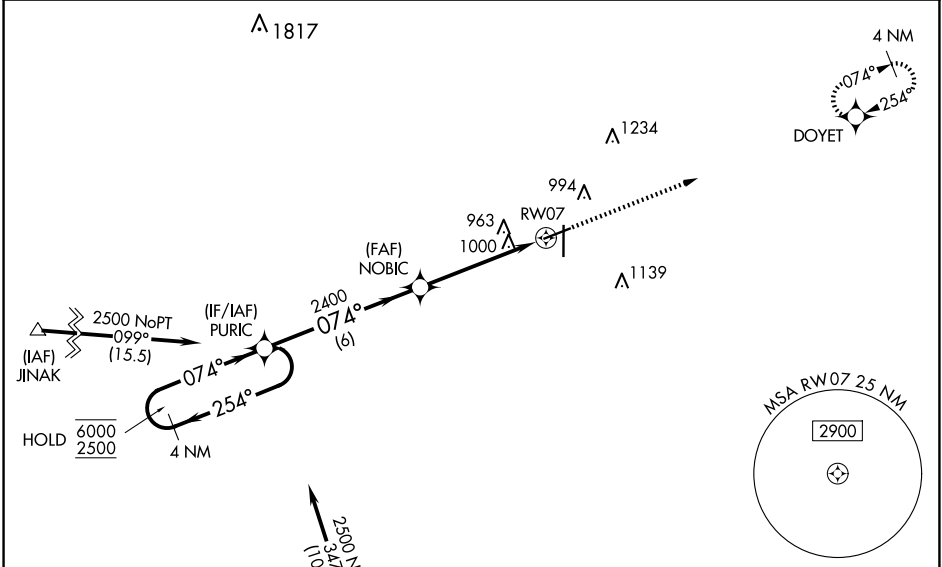
FINDLAY (F'DY)

RNP APCH - GPS.

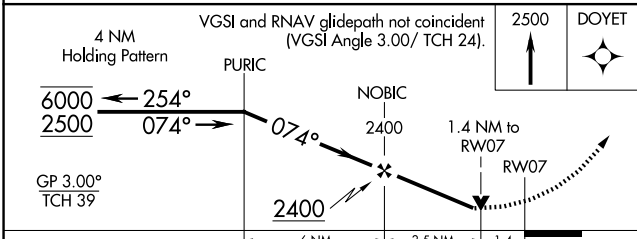
⚠ Baro-VNAV and VDP NA when using Lima Allen County altimeter setting. Rwy 7 helicopter visibility reduction below 3/4 SM NA. For uncompensated Baro-VNAV systems, LNAV/VNAV NA below -16°C or above 54°C. When local altimeter setting not received, use Lima altimeter setting and increase LNAV/VNAV DA to 1391 feet and all visibilities 3/8 SM. Increase all MDAs 80 feet and LNAV visibility Cat C/D 1/8 SM, and Circling visibility Cat C/D 1/4 SM. Straight-In Rwy 7 NA at night, Circling Rwy 7 NA at night.

MISSED APPROACH: Climb to 2500 direct DOYET and hold.

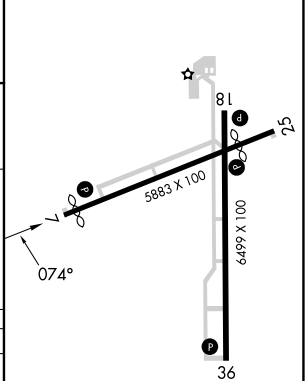
| | | |
|-----------------------|---------------------------------------|-----------------------------------|
| ASOS 132.85 | TOLEDO APP CON 120.8 317.55 | UNICOM 122.725 (CTAF) 0 |
|-----------------------|---------------------------------------|-----------------------------------|



Procedure NA for arrivals at KINDE on V47 southbound.



| | |
|----------|-------------------|
| ELEV 813 | D TDZE 810 |
|----------|-------------------|



| CATEGORY | A | B | C | D |
|-------------------|-----------|-------------|----------------|----------------|
| LNAV/VNAV DA | 1311-13/4 | | 501 (500-13/4) | |
| LNAV MDA | 1260-1 | 450 (500-1) | 1260-13/8 | 450 (500-13/8) |
| C CIRCLING | 1440-1 | 627 (700-1) | 1440-13/4 | 1540-21/4 |
| | | | 627 (700-13/4) | 727 (800-21/4) |

HIRL Rwy 7-25 and 18-36 **0**
REIL Rwy 7, 25 and 36 **0**

EC-2, 23 JAN 2025 to 20 FEB 2025

EC-2, 23 JAN 2025 to 20 FEB 2025