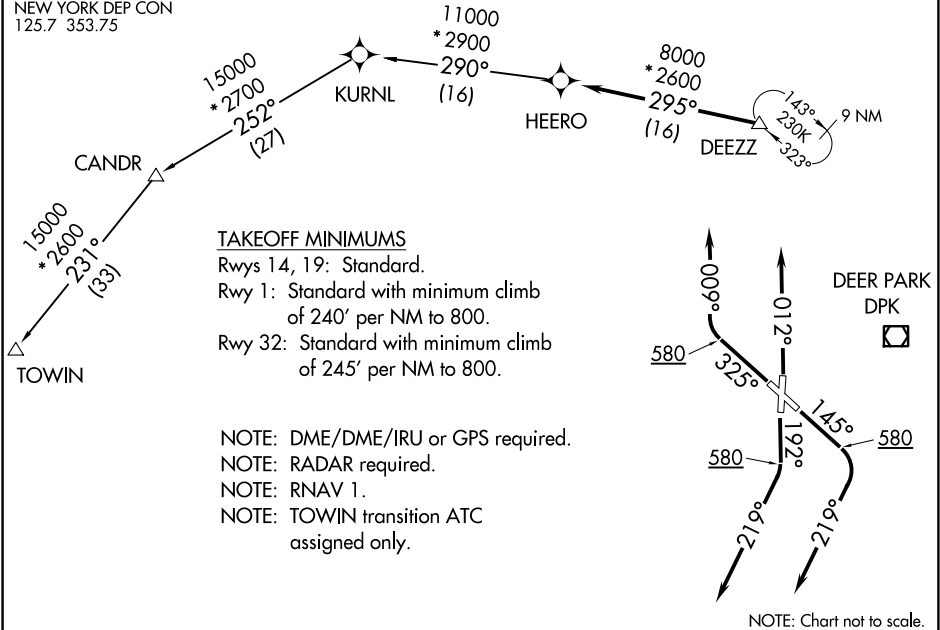


DEZZ FIVE DEPARTURE (RNAV)

ATIS
 126.65
 CLNC DEL
 128.25
 GND CON
 121.6 269.6
 REPUBLIC TOWER *
 118.8 279.65
 NEW YORK DEP CON
 125.7 353.75

**TOP ALTITUDE:
3000**



NE-2, 23 JAN 2025 to 20 FEB 2025

NE-2, 23 JAN 2025 to 20 FEB 2025



DEPARTURE ROUTE DESCRIPTION

TAKEOFF RUNWAY 1: Climb heading 012°, thence

TAKEOFF RUNWAY 14: Climb heading 145° to 580, then climbing right turn heading 219°, thence

TAKEOFF RUNWAY 19: Climb heading 192° to 580, then climbing right turn heading 219°, thence

TAKEOFF RUNWAY 32: Climb heading 325° to 580, then climbing right turn heading 009°, thence

. . . . expect vectors to DEZZ, then on track 295° to HEERO. Maintain 3000.
 Expect clearance to filed altitude/flight level within ten (10) minutes after departure.

CANDR TRANSITION (DEZZ5.CANDR)

TOWIN TRANSITION (DEZZ5.TOWIN)