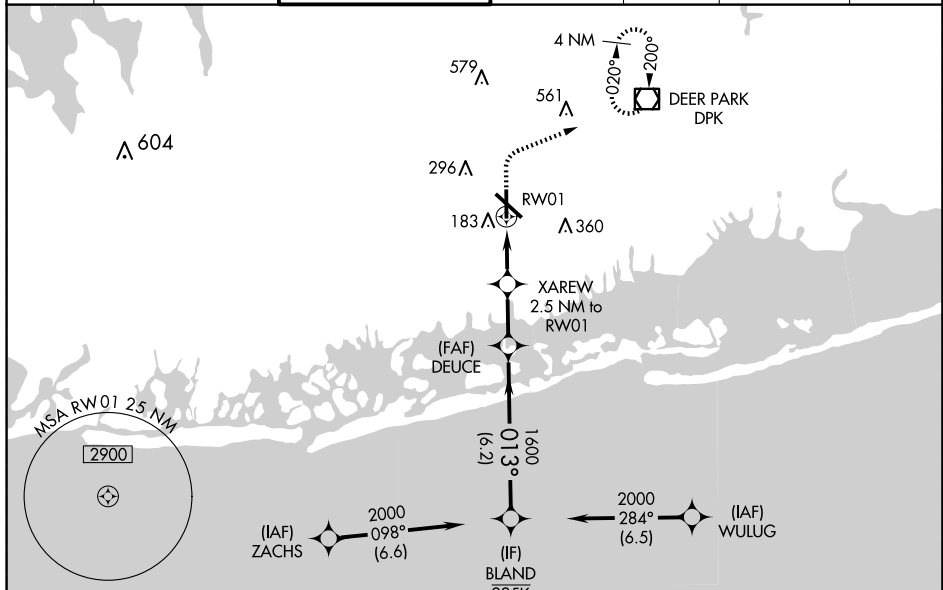


WAAS CH 82524 W01A	APP CRS 013°	Rwy Idg TDZE 72 Apt Elev 80	5517
--	------------------------	---	-------------

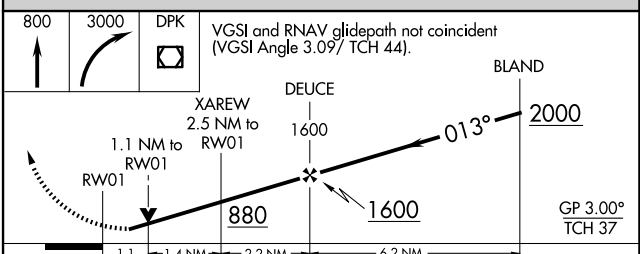
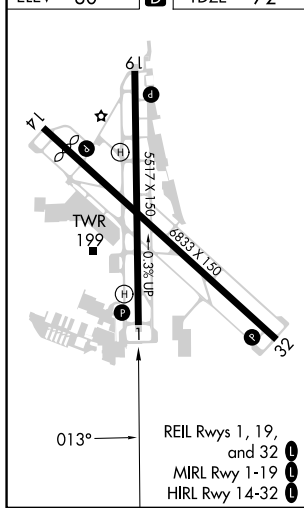
RNAV (GPS) RWY 1

REPUBLIC (F'R'G)

RNP APCH - GPS.		MISSED APPROACH: (Do not exceed 190K until DPK VOR/DME) Climb to 800 then climbing right turn to 3000 direct DPK VOR/DME and hold, continue climb-in-hold to 3000.			
For uncompensated Baro-VNAV systems, LNAV/VNAV NA below -12°C or above 54°C. Rwy 1 helicopter visibility reduction below 3/4 SM NA.		GND CON 121.6 269.6		CLNC DEL 128.25	CLNC DEL 128.25 (When twr closed)
ATIS 126.65	NEW YORK APP CON 128.125 269.0	REPUBLIC TOWER * 118.8 (CTAF) 0 279.65	UNICOM 122.95		



ELEV 80	D	TDZE 72
---------	----------	---------



CATEGORY	A	B	C	D
LPV DA		335-7/8	263 (300-7/8)	
LNAV/VNAV DA		370-7/8	298 (300-7/8)	
LNAV MDA	460-1	388 (400-1)	460-1 1/8	388 (400-1 1/8)
CIRCLING	640-1 560 (600-1)	720-1 640 (700-1)	860-2 1/4 780 (800-2 1/4)	1000-3 920 (1000-3)

NE-2, 23 JAN 2025 to 20 FEB 2025

NE-2, 23 JAN 2025 to 20 FEB 2025