

APP CRS	Rwy Idg	<b>6157</b>
<b>146°</b>	TDZE	<b>77</b>
	Apt Elev	<b>81</b>

# RNAV (RNP) Z RWY 14

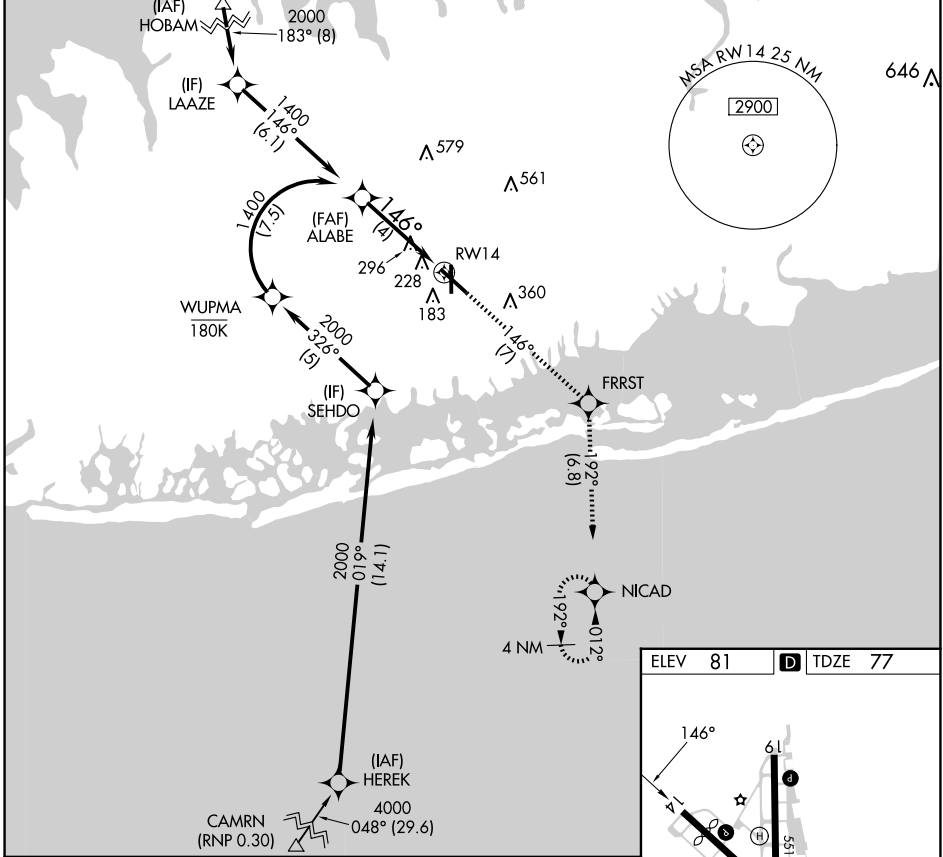
REPUBLIC (F'RG)

RNP AR APCH. RF required from HEREK.

MISSED APPROACH: Climb to 2000 on track 146° to FRRST and on track 192° to NICAD and hold.

For uncompensated Baro-VNAV systems, procedure NA below -12°C or above 48°C.

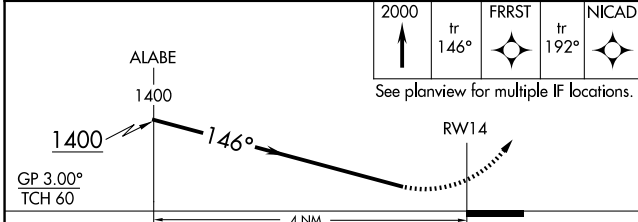
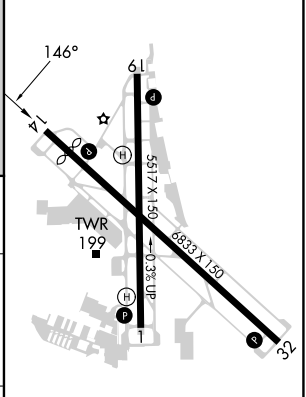
ATIS	NEW YORK APP CON	REPUBLIC TOWER ★	GND CON	CLNC DEL	CLNC DEL	UNICOM
<b>126.65</b>	<b>128.125 269.0</b>	<b>118.8 (CTAF) 0 279.65</b>	<b>121.6 269.6</b>	<b>128.25</b>	<b>128.25</b> (When twr closed)	<b>122.95</b>



NE-2, 23 JAN 2025 to 20 FEB 2025

NE-2, 23 JAN 2025 to 20 FEB 2025

ELEV	81	TDZE	77
------	----	------	----



GP 3.00°	TCH 60	2000		tr 146°	FRRST	tr 192°	NICAD
CATEGORY	A	B	C	D			
RNP 0.30 DA	525-1 <sup>3</sup> / <sub>8</sub>		447 (500-1 <sup>3</sup> / <sub>8</sub> )				

**AUTHORIZATION REQUIRED**

MIRL Rwy 1-19 **1**

HIRL Rwy 14-32 **1**

REIL Rws 1, 19, and 32 **1**