

VOR/DME OWB 108.65 Chan 23 (Y)	APP CRS 176°	Rwy Idg 8000 TDZE 407 Apt Elev 407
--	------------------------	---

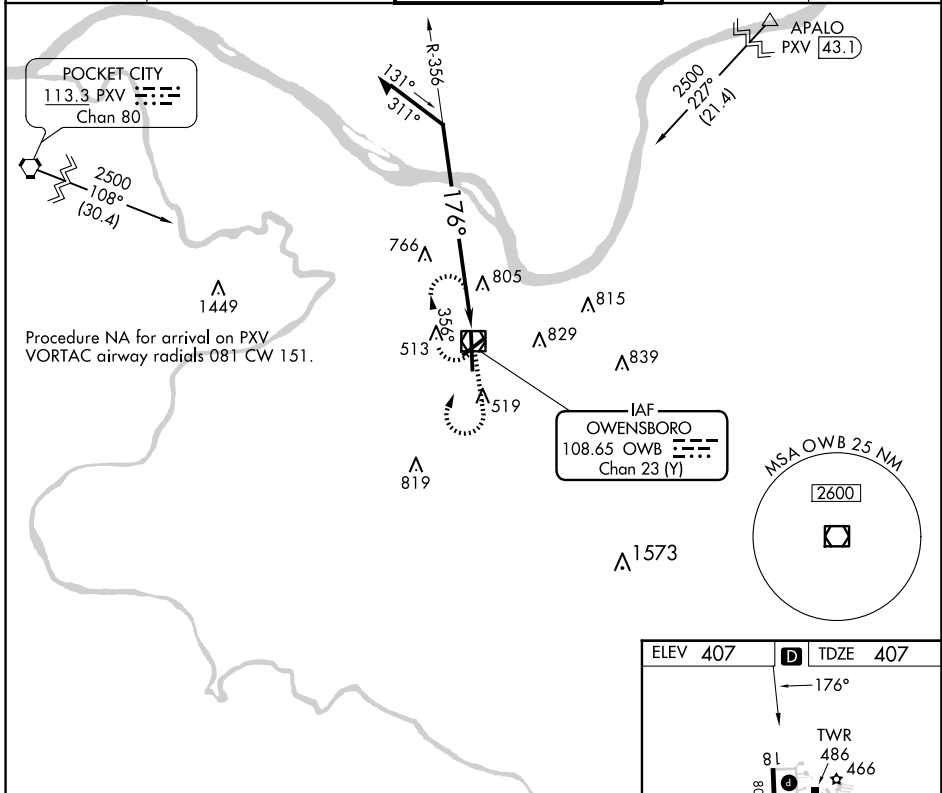
VOR RWY 18

OWENSBORO/DAVIESS COUNTY RGNL (OWB)



MISSED APPROACH: Climb to 2500 then right turn direct OWB VOR/DME and hold.

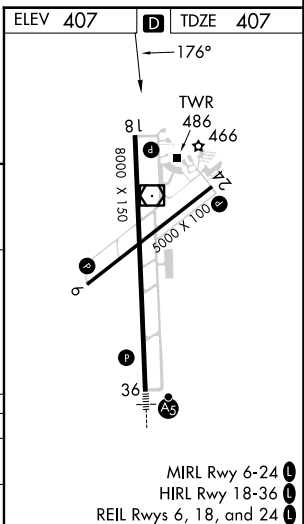
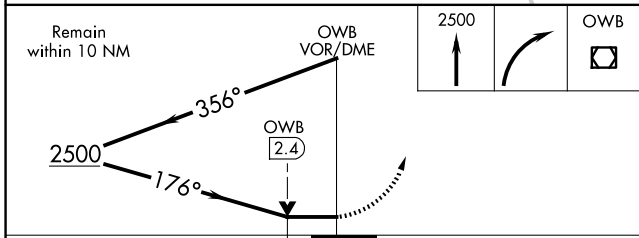
AWOS-3PT 119.025	EVANSVILLE APP CON * 124.025 290.9	OWENSBORO TOWER * 120.7 (CTAF) 251.15	GND CON 121.7	UNICOM 122.95
----------------------------	--	---	-------------------------	-------------------------



Procedure NA for arrival on PXV
VORTAC airway radials 081 CW 151.

SE-1, 23 JAN 2025 to 20 FEB 2025

SE-1, 23 JAN 2025 to 20 FEB 2025



CATEGORY	A	B	C	D
S-18	1120-1	713 (800-1)	1120-2	713 (800-2)
C CIRCLING	1120-1	713 (800-1)	1140-2 733 (800-2)	1140-2 1/4 733 (800-2 1/4)

MIRL Rwy 6-24
HIRL Rwy 18-36
REIL Rwy 6, 18, and 24