

WAAS CH <b>93738</b> <b>W24A</b>	APP CRS <b>240°</b>	Rwy Idg <b>8496</b> TDZE <b>682</b> Apt Elev <b>682</b>
--	------------------------	---

# RNAV (GPS) RWY 24

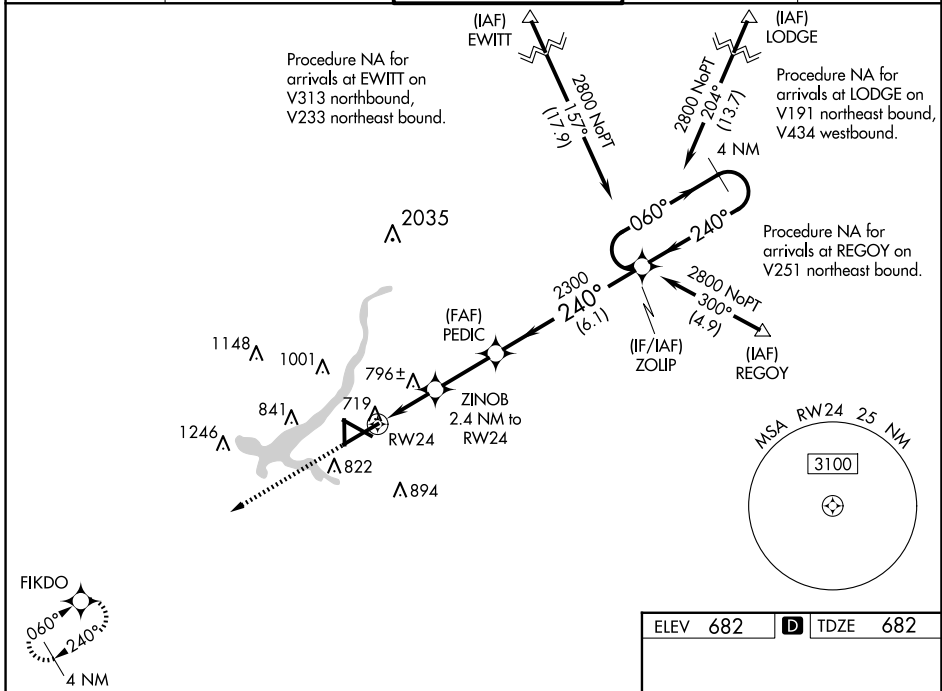
DECATUR (DEC)

RNP APCH.

▼ For uncompensated Baro-VNAV systems, LNAV/VNAV NA below -19°C or above 54°C.  
 Baro-VNAV and VDP NA when using Logan County altimeter setting.  
 ▲ When local altimeter setting not received, use Logan County altimeter setting; increase LPV DA to 1012 feet and visibility all Cats ¼ mile, LNAV/VNAV DA to 1168 feet and visibility all Cats ¼ mile; increase all MDA 80 feet and LNAV visibility Cats C/D ¾ mile, Circling visibility Cats C/D ¼ mile.

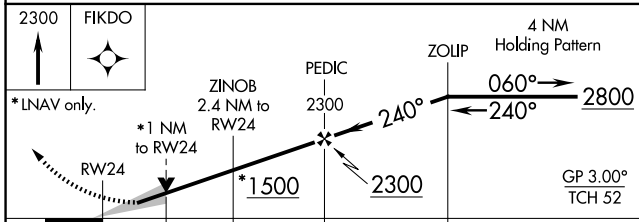
MISSED APPROACH: Climb to 2300 direct FIKDO and hold.

ATIS <b>126.35</b>	CHAMPAIGN APP CON* <b>132.85 290.225</b>	DECATUR TOWER* <b>118.9 (CTAF) 291.775</b>	GND CON <b>121.75 291.775</b>	UNICOM <b>122.95</b>
-----------------------	---	---	----------------------------------	-------------------------

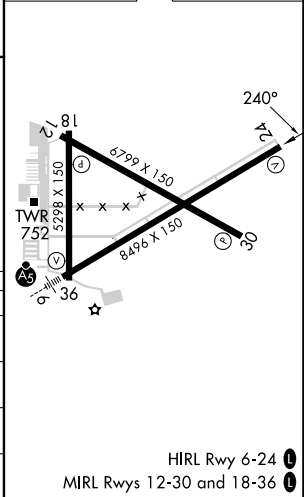


EC-3, 23 JAN 2025 to 20 FEB 2025

EC-3, 23 JAN 2025 to 20 FEB 2025



ELEV 682	<b>D</b> TDZE 682
----------	-------------------



CATEGORY	A	B	C	D
LPV DA		932-¾	250 (300-¾)	
LNAV/VNAV DA		1088-1⅜	406 (500-1⅜)	
LNAV MDA		1060-1	378 (400-1)	
<b>C</b> CIRCLING	1140-1 458 (500-1)	1240-1 558 (600-1)	1360-2 678 (700-2)	1360-2¼ 678 (700-2¼)