


LOC I-OKK 108.9	APP CRS 230°	Rwy ldg TDZE Apt Elev	6001 827 832
---------------------------	------------------------	-----------------------------	---

ILS or LOC RWY 23

KOKOMO MUNI (OKK)

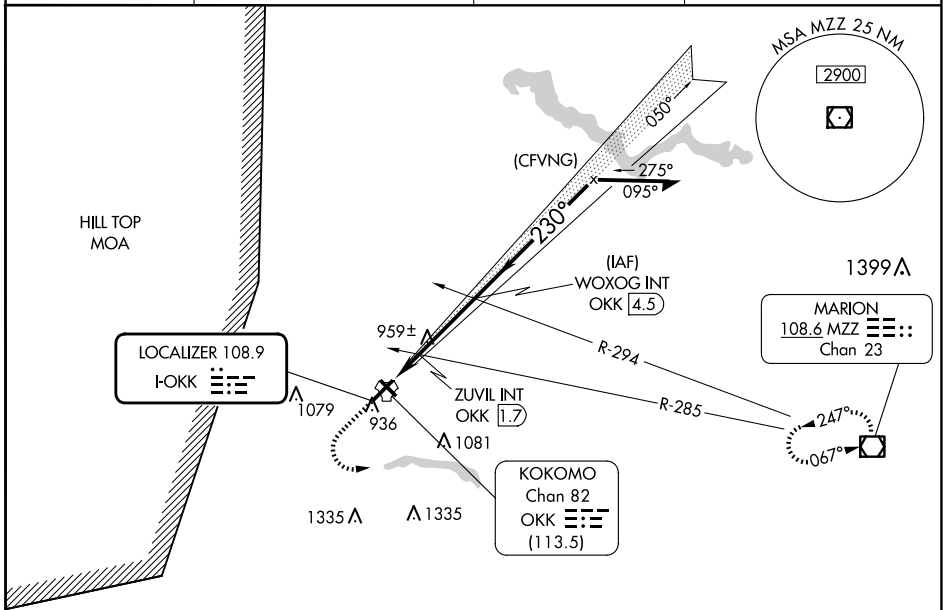
RADAR required for procedure entry.

NA For inop ALS, increase S-LOC 23 Cat C/D visibility to 1½ SM.
* DME from OKK

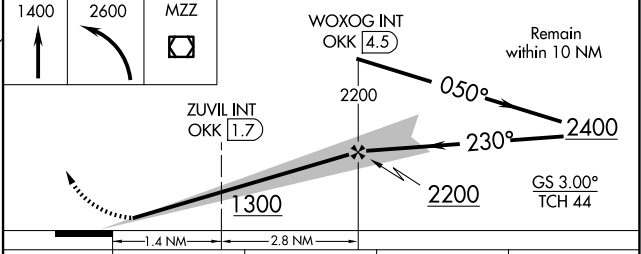
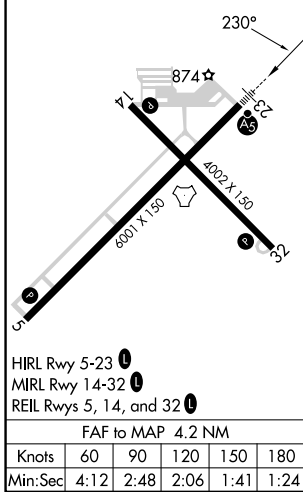
MALSR 

MISSED APPROACH: Climb to 1400 then climbing left turn to 2600 direct MZZ VOR/DME and hold.

AWOS-3PT 128.675	GRISSEM APP CON* 121.05 338.275	CLNC DEL 120.0	UNICOM 123.0 (CTAF) 0
----------------------------	---	--------------------------	---------------------------------



ELEV 832	TDZE 827
----------	----------



CATEGORY	A	B	C	D
S-ILS 23	1027-½ 200 (200-½)			
S-LOC 23	1300-½ 473 (500-½)	1300-1 473 (500-1)		
C CIRCLING	1300-1 468 (500-1)	1400-1½ 568 (600-1½)	1420-2 588 (600-2)	
ZUVIL FIX MINIMUMS* (DUAL VOR RECEIVERS or DME REQUIRED)				
S-LOC 23	1220-½ 393 (400-½)	1220-¾ 393 (400-¾)		
C CIRCLING	1260-1 428 (500-1)	1300-1 468 (500-1)	1400-1½ 568 (600-1½)	1420-2 588 (600-2)

EC-2, 23 JAN 2025 to 20 FEB 2025

EC-2, 23 JAN 2025 to 20 FEB 2025