

ALPENA, MICHIGAN

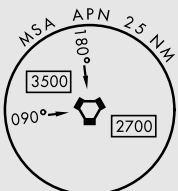
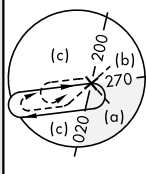
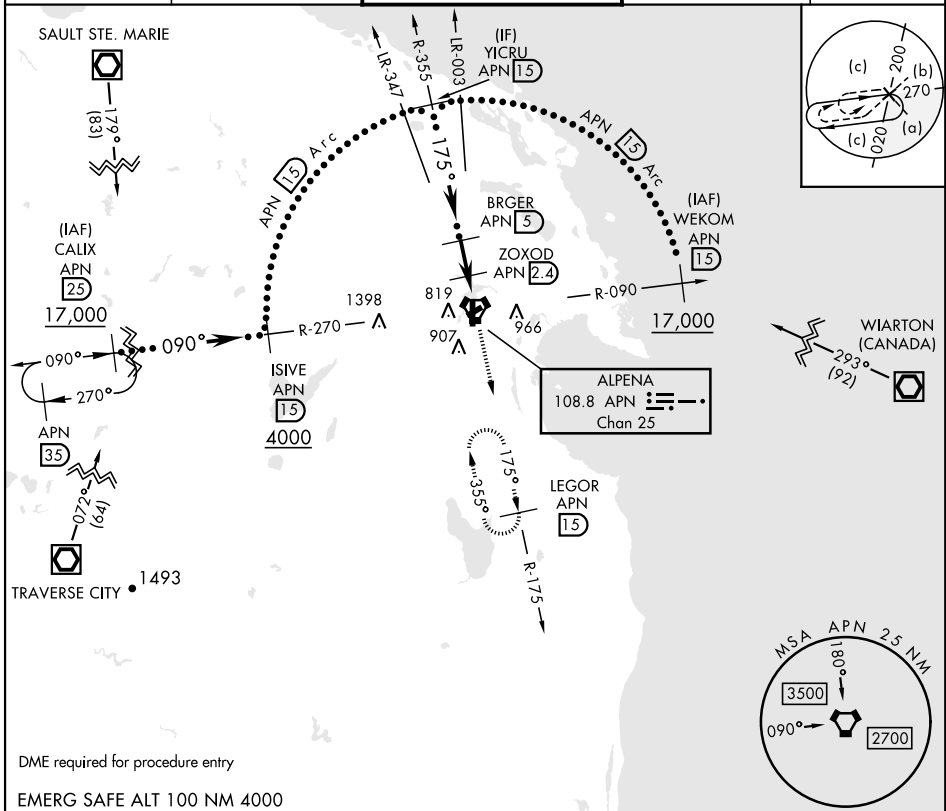
HI-TACAN RWY 19

VORTAC APN 108.8 Chan 25	APCH CRS 175°	Rwy Idg TDZE Arprt Elev 9001 683 690	AL-718 [USAF]	ALPENA COUNTY RGNL (KAPN)
--	-------------------------	--	---------------	---------------------------

DME required.

MISSED APPROACH: Climb to 5000 on APN R-175 to LEGOR (1.5 DME) and hold, continue climb in hold to 5000.

ATIS ★ 120.675 327.05	ALPENA APP CON 128.425 379.3	ALPENA TOWER ★ 121.35 (CTAF) 0 318.1	GND CON 121.9 275.8	UNICOM 122.95
---------------------------------	--	--	-------------------------------	-------------------------



DME required for procedure entry

EMERG SAFE ALT 100 NM 4000

YICRU R-355 (1.5) 2800	VGS1 and descent angles not coincident (VGS1 Angle 3.00/TCH 39)		5000	LEGOR APN (1.5)	ELEV 690	TDZE 683
175°	BRGER (5)	ZOXOD (2.4)	APN R-175			
3.23° TCH 55	2300	JUDBI (1)			HIRL Rwy 1-19 (L) MIRL Rwy 7-25 (L) REIL Rwy 7,25, and 19 (L)	
CATEGORY	C	D	E			
S-19	1140-1 3/8	457 (500-1 3/8)				
CIRCLING	1220-1 1/2 530 (600-1 1/2)	1280-2 590 (600-2)	1320-2 1/4 630 (700-2 1/4)			

HI-TACAN RWY 19

EC-1, 23 JAN 2025 to 20 FEB 2025

EC-1, 23 JAN 2025 to 20 FEB 2025