

ALPENA, MICHIGAN

# HI-VOR or TACAN RWY 1

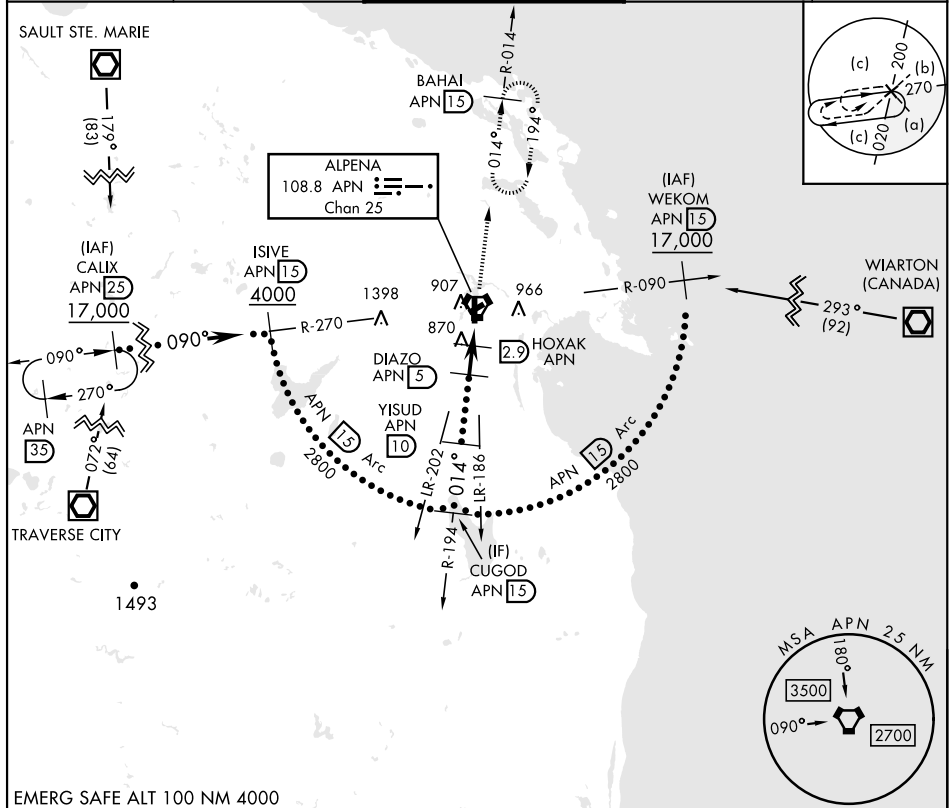
VORTAC APN <b>108.8</b> Chan <b>25</b>	APCH CRS <b>014°</b>	Rwy Ldg TDZE Arprt Elev <b>9001</b> <b>685</b> <b>690</b>	AL-718 [USAF]	ALPENA COUNTY RGNL (KAPN)
--	-------------------------	--	---------------	---------------------------

DME required.

MALSRL 

MISSED APPROACH: Climb to 5000 on APN R-014 to BAHAI 15 DME and hold, continue climb in hold to 5000.

ATIS ★ <b>120.675 327.05</b>	ALPENA APP CON <b>128.425 379.3</b>	ALPENA TOWER ★ <b>121.35 (CTAF) 0 318.1</b>	GND CON <b>121.9 275.8</b>	UNICOM <b>122.95</b>
---------------------------------	--	--	-------------------------------	-------------------------



EC-1, 23 JAN 2025 to 20 FEB 2025

EC-1, 23 JAN 2025 to 20 FEB 2025

EMERG SAFE ALT 100 NM 4000

CATEGORY	C	D	E
	1220-1½ 530 (600-1½)	1280-2 590 (600-2)	1320-2 ¼ 630 (700-2¼)

CUGOD R-194	YISUD	DIAZO	HOXAK	WUDIM	VORTAC
2800	2800	2000	1340	1340	5000
014°	014°	014°	014°	014°	014°
2.1 NM	1.3 NM	5 NM			

ELEV	690	TDZE	685
BAHAI APN	15		

TWR	768
737	767
751	751

REIL Rwy	7,25,19
HIRL Rwy	1-19
MIRL Rwy	7-25

ALPENA, MICHIGAN

45°05'N - 83°34'W

ALPENA COUNTY RGNL (KAPN)

# HI-VOR or TACAN RWY 1