

WAAS CH <b>50310</b> <b>W01A</b>	APP CRS <b>007°</b>	Rwy Idg TDZE Apt Elev	<b>9001</b> <b>685</b> <b>690</b>
--	------------------------	-----------------------------	---

# RNAV (GPS) RWY 1

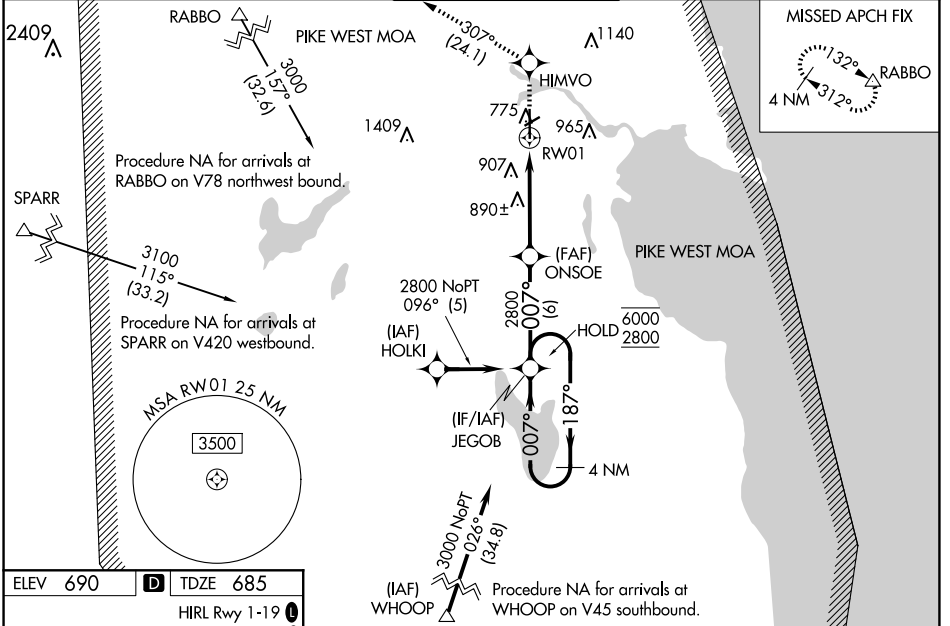
ALPENA COUNTY RGNL (APN)

RNP APCH - GPS.

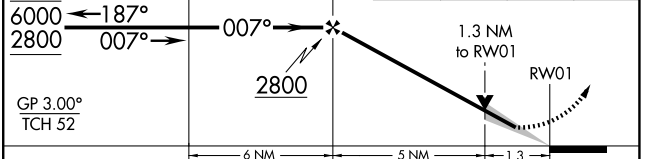
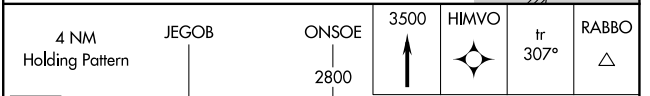
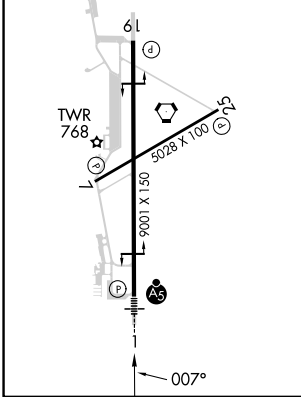
▼ For uncompensated Baro-VNAV systems, LNAV/VNAV NA below -16°C or above 54°C. Baro-VNAV and VDP NA when using PZQ altimeter setting. For inop ALS, increase LPV all Cats visibility to 7/8 SM, LNAV/VNAV all Cats visibility to 1 SM and LNAV Cats C/D visibility to 1 3/8 SM. When local altimeter setting not received, use PZQ altimeter setting and increase LPV DA to 1029 feet and all visibilities 1/8 SM; increase LNAV/VNAV DA to 1084 feet; increase all MDA's 60 feet. For inop ALS when using PZQ altimeter setting, increase LPV all Cats visibility to 1 SM.

**MALSR** MISSED APPROACH: Climb to 3500 direct HIMVO and on track 307° to RABBO and hold.

ATIS <b>120.675 327.05</b>	ALPENA APP CON ★ <b>128.425 379.3</b>	ALPENA TOWER ★ <b>121.35 (CTAF) 318.1</b>	GND CON <b>121.9 275.8</b>	UNICOM <b>122.95</b>
-------------------------------	--	--	-------------------------------	-------------------------



ELEV 690	<b>D</b> TDZE 685
HIRL Rwy 1-19	
MIRL Rwy 7-25	
REIL Rwys 7, 19 and 25	



CATEGORY	A	B	C	D
LPV DA		974-1/2	289 (300-1/2)	
LNAV/VNAV DA		1029-5/8	344 (400-5/8)	
LNAV MDA	1160-1/2	475 (500-1/2)	1160-1	475 (500-1)
<b>C</b> CIRCLING	1160-1	470 (500-1)	1220-1 1/2 530 (600-1 1/2)	1300-2 610 (700-2)