

ALPENA, MICHIGAN

AL-718 (FAA)

24361

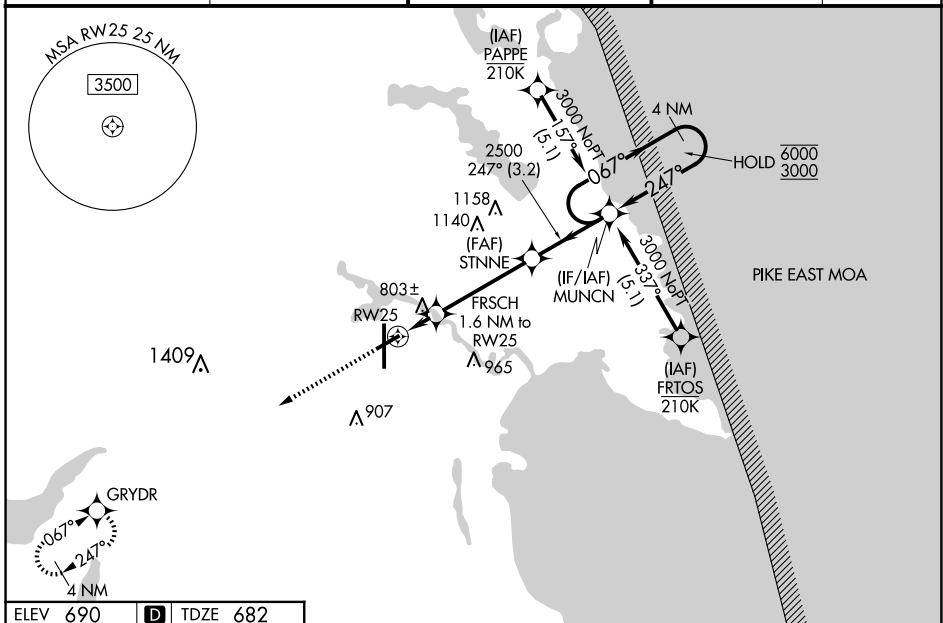
WAAS CH <b>45548</b>	APP CRS <b>247°</b>	Rwy Idg TDZE Apt Elev	<b>5031</b> <b>682</b> <b>690</b>
-------------------------	------------------------	-----------------------------	---

# RNAV (GPS) RWY 25

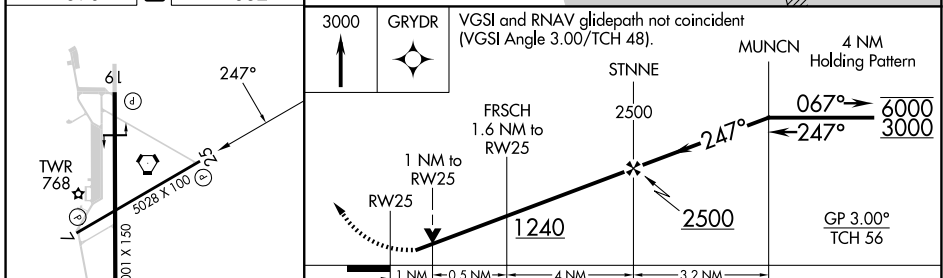
ALPENA COUNTY RGNL (APN)

RNP APCH - GPS.		MISSED APPROACH: Climb to 3000 direct GRYDR and hold.
<p><b>⚠</b> For uncompensated Baro-VNAV systems, LNAV/VNAV NA below -19°C or above 54°C.  <b>⚠</b> Rwy 25 helicopter visibility reduction below 3/4 SM NA. Baro-VNAV and VDP NA when using PZQ altimeter setting. When local altimeter setting not received, use PZQ altimeter setting and increase LPV DA to 1018 feet; increase LNAV/VNAV DA to 1115 feet and all visibilities 1/4 SM. Increase all MDAs 60 feet and LNAV visibility Cat C/D 1/4 SM.</p>		

ATIS ★ <b>120.675 327.05</b>	ALPENA APP CON ★ <b>128.425 379.3</b>	ALPENA TOWER ★ <b>121.35 (CTAF) 0 318.1</b>	GND CON <b>121.9 275.8</b>	UNICOM <b>122.95</b>
---------------------------------	--	--	-------------------------------	-------------------------



ELEV 690	<b>D</b>	TDZE 682
----------	----------	----------



	A	B	C	D
CATEGORY	A	B	C	D
LPV DA		963-1	281 (300-1)	
LNAV/VNAV DA		1060-1	378 (400-1)	
LNAV MDA		1060-1	378 (400-1)	
CIRCLING	1140-1	450 (500-1)	1220-1½ 530 (600-1½)	1300-2 610 (700-2)

ALPENA, MICHIGAN  
Orig 26DEC24

45°05'N-83°34'W

# ALPENA COUNTY RGNL (APN) RNAV (GPS) RWY 25

EC-1, 23 JAN 2025 to 20 FEB 2025

EC-1, 23 JAN 2025 to 20 FEB 2025