

LOC/DME I-LOZ 110.9 Chan 46	APP CRS 057°	Rwy Idg TDZE 1212 Apt Elev 1212	5000
---	------------------------	---	-------------

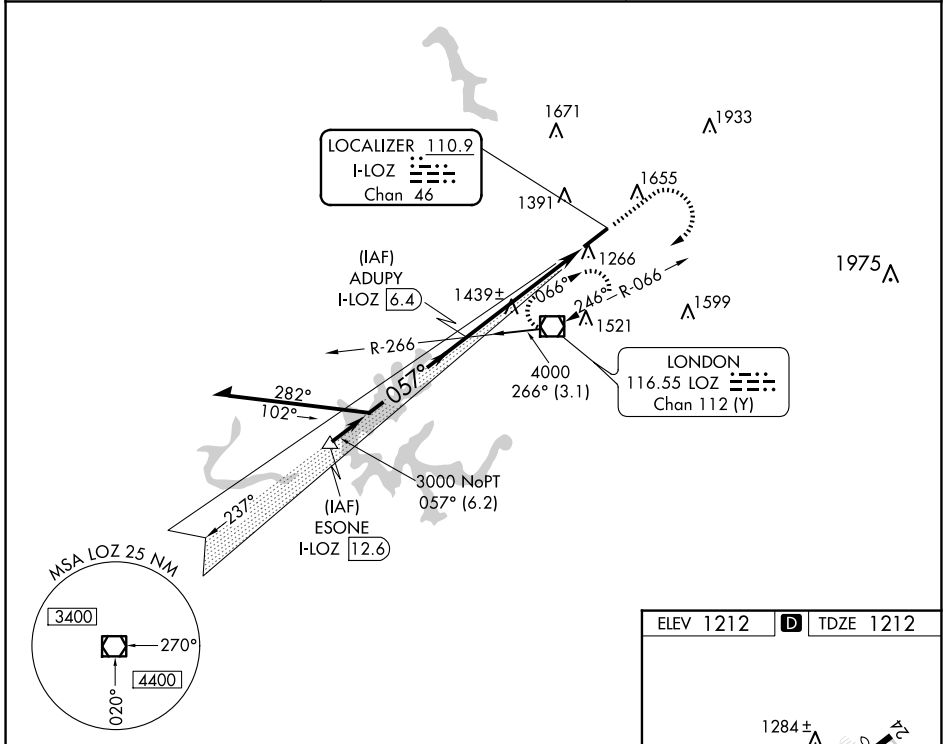
ILS or LOC RWY 6

LONDON/CORBIN/MAGEE (LOZ)

⚠ Visibility reduction by helicopters NA. VDP NA when using Somerset altimeter setting. When local altimeter setting not received, use Somerset altimeter setting: increase DA to 1562 feet and all visibility ¼ SM; increase all MDAs 100 feet and S-LOC 6 Cat C ¼ SM, Cat D ½ SM, Circling Cat C/D ¼ SM.

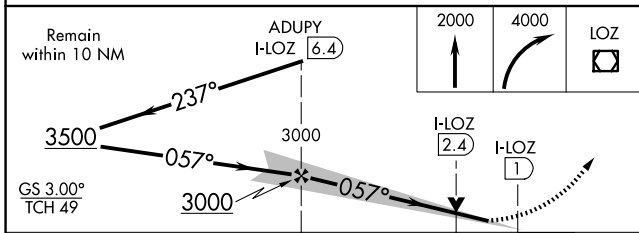
MISSED APPROACH: Climb to 2000 then climbing right turn to 4000 direct LOZ VOR/DME and hold, continue climb-in-hold to 4000.

ASOS 119.075	INDIANAPOLIS CENTER 124.625 371.925	UNICOM 123.0 (CTAF)
------------------------	---	-------------------------------



SE-1, 23 JAN 2025 to 20 FEB 2025

SE-1, 23 JAN 2025 to 20 FEB 2025



ELEV 1212	D TDZE 1212
-----------	--------------------

The diagram shows the runway (RWY 6-24) with a width of 575 x 150 feet. Key altitudes include 1284±, 1237, and 1273±. The final approach is at 057° 5.4 NM from the FAF, with a 0.5% up-slope.

MIRL Rwy 6-24	Ⓡ				
REIL Rws 6 and 24	Ⓡ				
FAF to MAP 5.4 NM					
Knots	60	90	120	150	180
Min:Sec	5:24	3:36	2:42	2:10	1:48

CATEGORY	A	B	C	D
S-ILS 6		1462-1	250 (300-1)	
S-LOC 6	1720-1	508 (600-1)	1720-1½	508 (600-1½)
CIRCLING	1780-1 568 (600-1)	2040-1¼ 828 (900-1¼)	2040-2½ 828 (900-2½)	2040-2¾ 828 (900-2¾)