

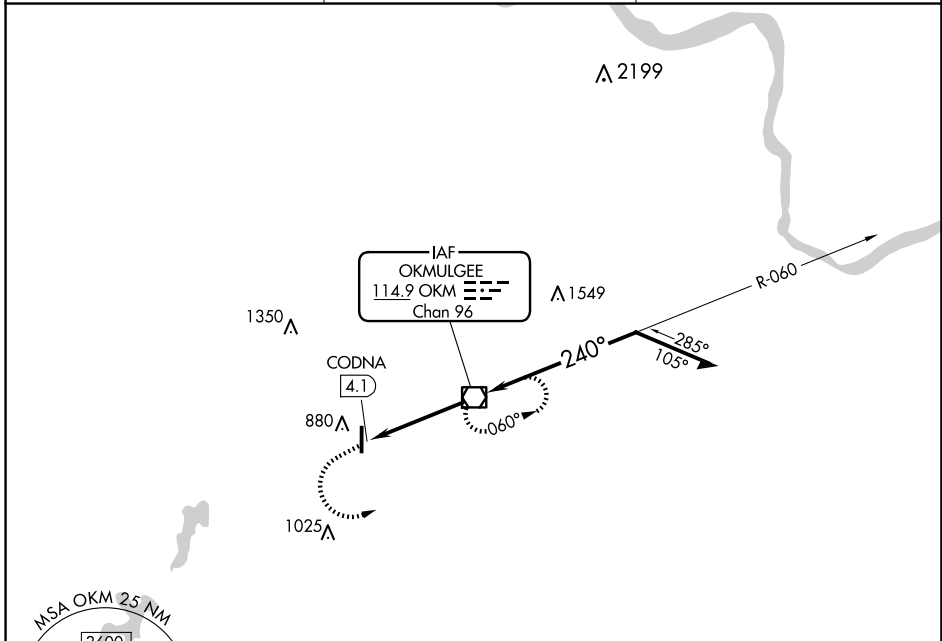
VOR/DME OKM 114.9 Chan 96	APP CRS 240°	Rwy Idg TDZE Apt Elev N/A N/A 720
---	------------------------	---

VOR-A

OKMULGEE RGNL/PAUL AND BETTY ABBOTT FLD (OKM)

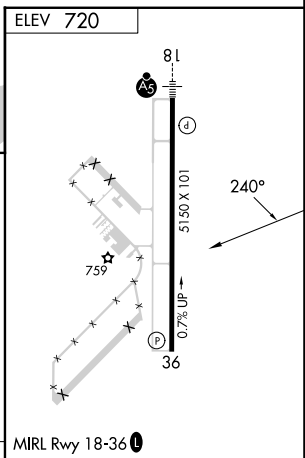
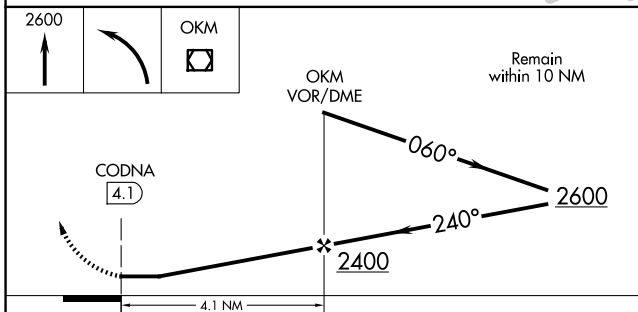
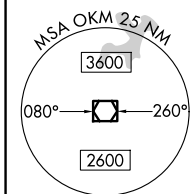
<p>NA When local altimeter setting not received, use Tulsa Intl altimeter setting: Increase all MDAs 80 feet and visibility Cat C ¼ SM.</p>	<p>MISSED APPROACH: Climb to 2600 then left turn direct OKM VOR/DME and hold.</p>
--	---

<p>AWOS-3PT 118.225</p>	<p>TULSA APP CON 119.85 338.3</p>	<p>UNICOM 123.0 (CTAF) 0</p>
------------------------------------	--	---



SC-1, 23 JAN 2025 to 20 FEB 2025

SC-1, 23 JAN 2025 to 20 FEB 2025



CATEGORY	A	B	C	D	FAF to MAP 4.1 NM					
	1240-1 520 (600-1)	1340-1 620 (700-1)	1340-1¾ 620 (700-1¾)	NA	Knots	60	90	120	150	180
					Min:Sec	4:06	2:44	2:03	1:38	1:22

VOR-A