

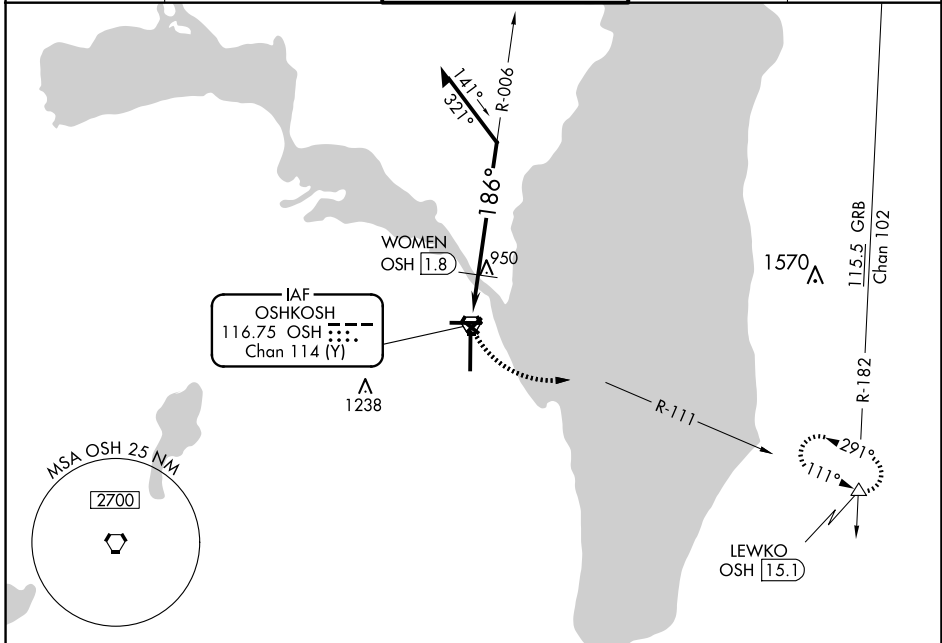
VORTAC OSH <b>116.75</b> Chan <b>114 (Y)</b>	APP CRS <b>186°</b>	Rwy Idg TDZE <b>794</b> Apt Elev <b>808</b>
--	------------------------	---

**VOR RWY 18**  
WITTMAN RGNL (OSH)

**⚠** Circling to Rwy 5, 23, and 31 NA at night. VDP NA with Fond Du Lac County altimeter setting. When local altimeter setting not received, use Fond Du Lac altimeter setting and increase all MDA 40 feet; increase WOMEN fix minimums Circling Cat D visibility ¼ mile. Helicopter visibility reduction below ¾ SM NA.

**MISSED APPROACH:** Climbing left turn to 3000 on OSH VORTAC R-111 to LEWKO INT/OSH 15.1 DME and hold.

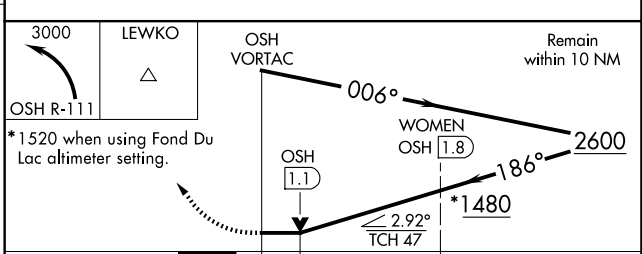
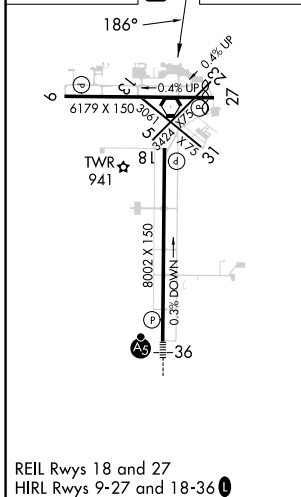
ATIS <b>125.9</b>	MILWAUKEE APP CON <b>127.0 263.075</b>	OSHKOSH TOWER ★ <b>118.5 (CTAF) 290.9</b>	GND CON <b>132.3</b>	UNICOM <b>122.95</b>
----------------------	---	--	-------------------------	-------------------------



EC-3, 23 JAN 2025 to 20 FEB 2025

EC-3, 23 JAN 2025 to 20 FEB 2025

ELEV <b>808</b>	<b>D</b>	TDZE <b>794</b>
-----------------	----------	-----------------



CATEGORY	A	B	C	D
S-18	1480-1	686 (700-1)	1480-2	686 (700-2)
<b>C</b> CIRCLING	1480-1	672 (700-1)	1480-2	1480-2½ 672 (700-2½)
<b>WOMEN FIX MINIMUMS</b>				
S-18	1260-1	466 (500-1)	1260-1⅓	466 (500-1⅓)
<b>C</b> CIRCLING	1280-1 472 (500-1)	1300-1 492 (500-1)	1360-1½ 552 (600-1½)	1440-2 632 (700-2)