

WAAS CH 90503 W19A	APP CRS 190°	Rwy Idg TDZE Apt Elev	6001 19 19
--	------------------------	-----------------------------	---------------------------------------

RNAV (GPS) RWY 19

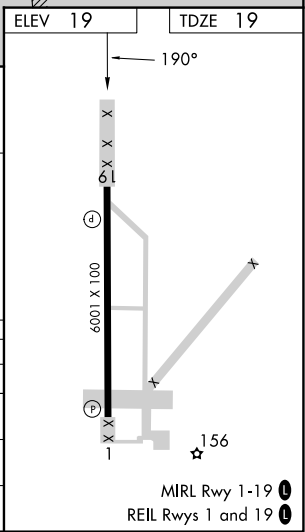
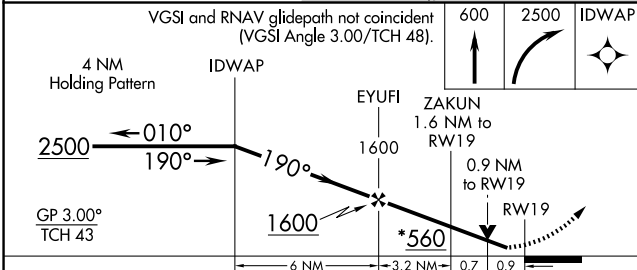
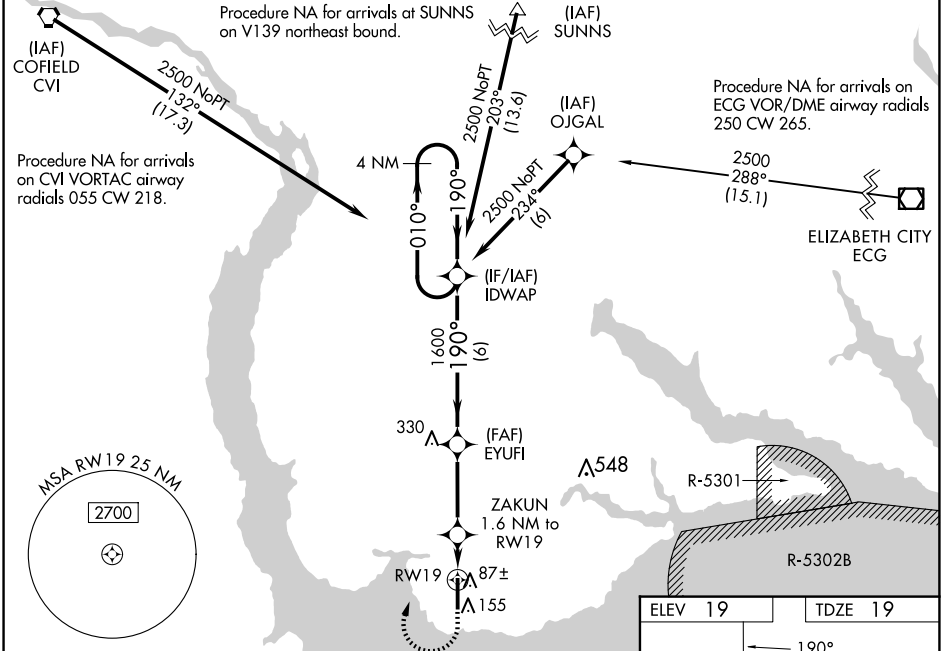
NORTHEASTERN RGNL (E/D/E)

RNP APCH - GPS

Baro-VNAV NA when using Elizabeth City altimeter setting. For uncompensated Baro-VNAV systems, LNAV/VNAV NA below -15°C or above 43°C. When local altimeter setting not received, use Elizabeth City altimeter setting and increase LPV DA to 276 feet; increase LNAV/VNAV DA to 355 feet and all visibilities $\frac{1}{8}$ SM; increase all MDAs 60 feet and LNAV visibility Cat C/D $\frac{1}{4}$ SM, and Circling visibility reduction below $\frac{3}{4}$ SM NA.

MISSED APPROACH:
Climb to 600 then right turn to 2500 direct IDWAP and hold.

AWOS-3 118.275	WASHINGTON CENTER 123.85 279.65	UNICOM 123.0 (CTAF) 0
--------------------------	---	---------------------------------



CATEGORY	A	B	C	D
LPV DA		219- $\frac{3}{4}$	200 (200- $\frac{3}{4}$)	
LNAV/VNAV DA		289- $\frac{7}{8}$	270 (300- $\frac{7}{8}$)	
LNAV MDA		400-1 $\frac{1}{8}$	381 (400-1 $\frac{1}{8}$)	
CIRCLING	520-1	501 (600-1)	560-1 $\frac{1}{2}$ 541 (600-1 $\frac{1}{2}$)	580-2 561 (600-2)

SE-2, 23 JAN 2025 to 20 FEB 2025

SE-2, 23 JAN 2025 to 20 FEB 2025

MIRL Rwy 1-19 0
REIL Rwy 1 and 19 0