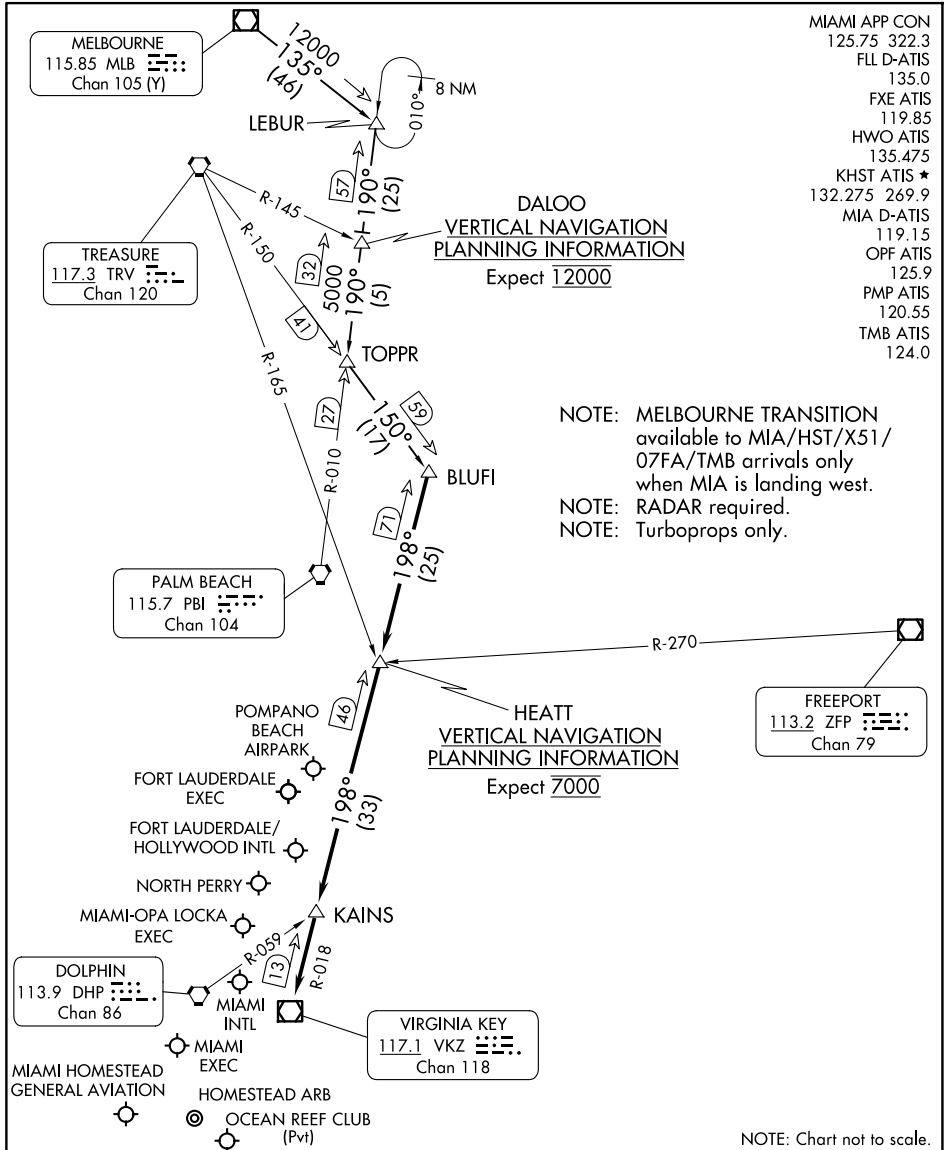


BLUFI FOUR ARRIVAL

FORT LAUDERDALE, FLORIDA



- MIAMI APP CON 125.75 322.3
- FLL D-ATIS 135.0
- FXE ATIS 119.85
- HWO ATIS 135.475
- KHST ATIS ★ 132.275 269.9
- MIA D-ATIS 119.15
- OPF ATIS 125.9
- PMP ATIS 120.55
- TMB ATIS 124.0

NOTE: MELBOURNE TRANSITION available to MIA/HST/X51/07FA/TMB arrivals only when MIA is landing west.

NOTE: RADAR required.

NOTE: Turboprops only.

HEATT
VERTICAL NAVIGATION
PLANNING INFORMATION
Expect 7000

DALOO
VERTICAL NAVIGATION
PLANNING INFORMATION
Expect 2000

ARRIVAL ROUTE DESCRIPTION

MELBOURNE TRANSITION (MLB.BLUF14): From over MLB VOR/DME on MLB R-135 to LEBUR, then on PBI R-010 to TOPPR, then on TRV R-150 to BLUFI INT. Thence from over BLUFI INT/VKZ 71 DME on VKZ R-018 to HEATT INT/VKZ 46 DME, then on VKZ R-018 to KAINS INT, then on VKZ R-018 to VKZ VOR/DME. Expect RADAR vectors to final approach course after KAINS INT.

NOTE: Chart not to scale.

SE-3, 23 JAN 2025 to 20 FEB 2025

SE-3, 23 JAN 2025 to 20 FEB 2025

BLUFI FOUR ARRIVAL

FORT LAUDERDALE, FLORIDA