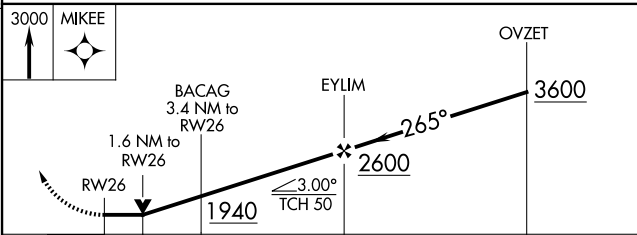
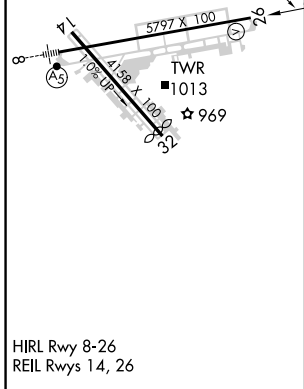
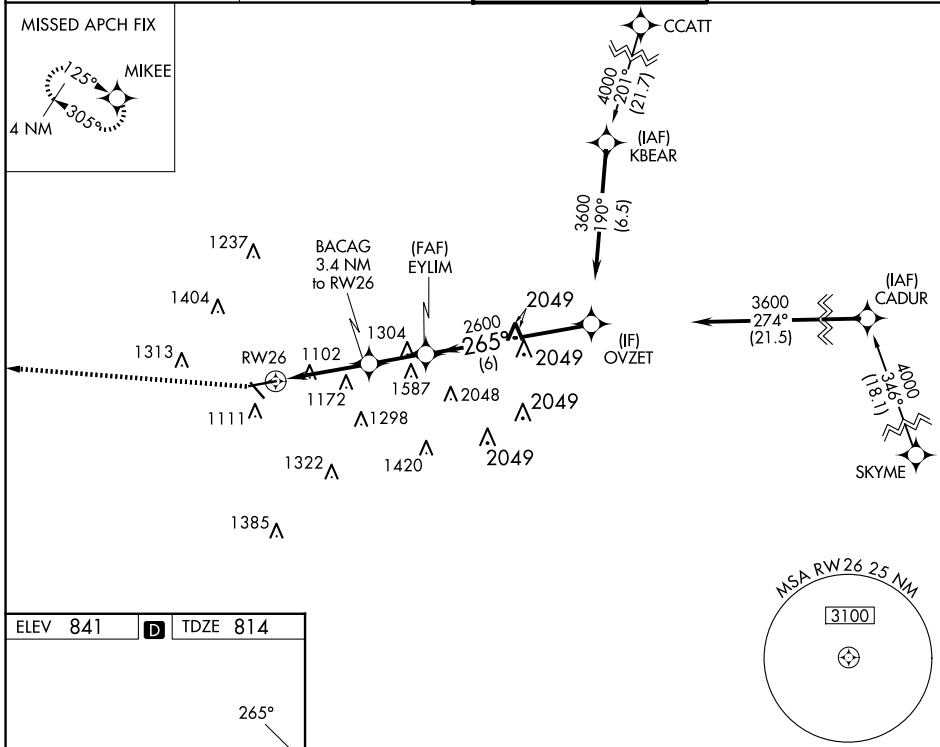


WAAS CH <b>65930</b> <b>W26A</b>	APP CRS <b>265°</b>	Rwy Idg TDZE Apt Elev <b>5797</b> <b>814</b> <b>841</b>
--	------------------------	--

# RNAV (GPS) RWY 26

FULTON COUNTY EXEC/CHARLIE BROWN FLD (F'TY)

RNP APCH. <b>⚠</b> Circling Rwy 14, 32 NA at night. Rwy 26 helicopter visibility reduction below 3/4 SM NA.		MISSED APPROACH: Climb to 3000 direct MIKEE and hold.	
ATIS <b>120.175</b>	ATLANTA APP CON <b>121.0 268.7</b>	FULTON COUNTY TOWER <b>118.45 257.8</b>	GND CON <b>121.7 348.6</b>



CATEGORY	A	B	C	D
LP MDA	1360-1	546 (600-1)	1360-1 <sup>5</sup> / <sub>8</sub>	546 (600-1 <sup>5</sup> / <sub>8</sub> )
LNAV MDA	1380-1	566 (600-1)	1380-1 <sup>5</sup> / <sub>8</sub>	566 (600-1 <sup>5</sup> / <sub>8</sub> )
<b>C</b> CIRCLING	1440-1 599 (600-1)	1520-1 679 (700-1)	1740-2 <sup>3</sup> / <sub>4</sub> 899 (900-2 <sup>3</sup> / <sub>4</sub> )	1740-3 899 (900-3)

SE-4, 23 JAN 2025 to 20 FEB 2025

SE-4, 23 JAN 2025 to 20 FEB 2025