

APP CRS 085°	Rwy Idg 5797
	TDZE 808
	Apt Elev 841

RNAV (RNP) Z RWY 8

FULTON COUNTY EXEC/CHARLIE BROWN FLD (FTY)

RNP AR APCH.

▼ For uncompensated Baro-VNAV systems, procedure NA below -11°C or above 54°C. Ridge with trees to 1299' MSL between FAF and runway threshold may be obscured by clouds even with airfield ceiling at or above procedure minimums.

MALS/R

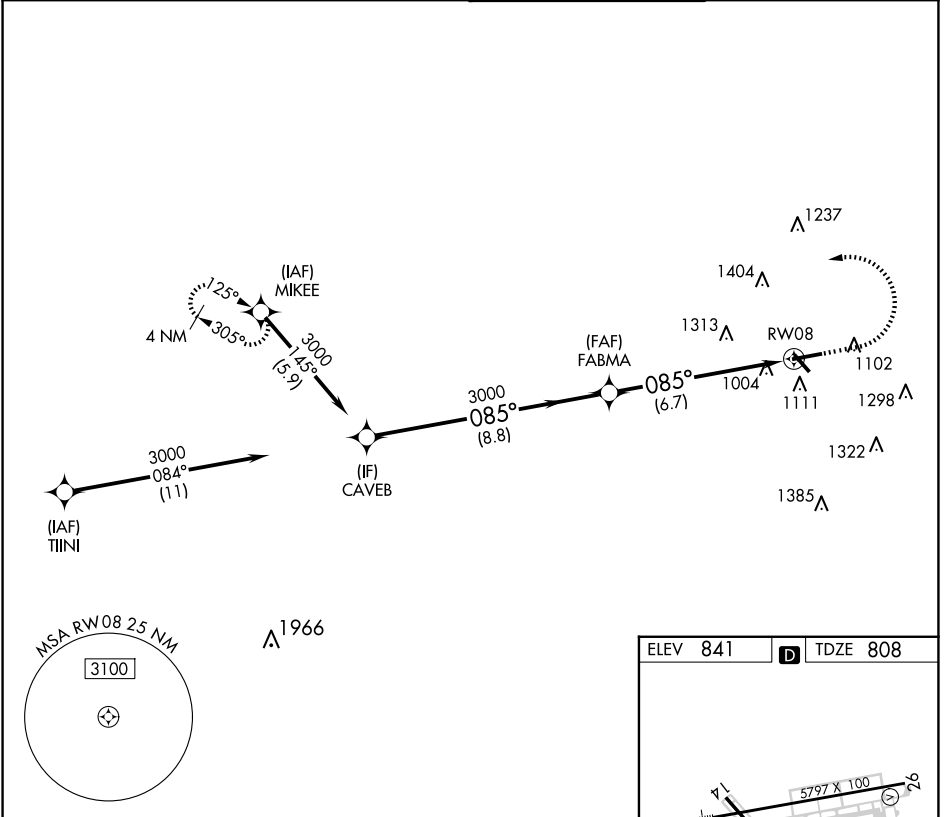


MISSED APPROACH: Climb to 1600 then climbing left turn to 3000 direct MIKEE and hold.

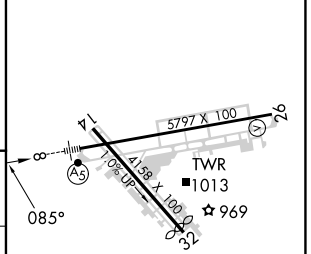
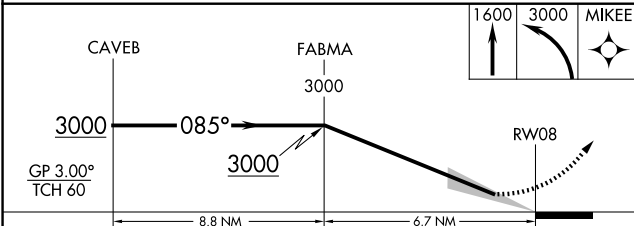
ATIS 120.175	ATLANTA APP CON 121.0 268.7	FULTON COUNTY TOWER 118.45 257.8	GND CON 121.7 348.6
------------------------	---------------------------------------	--	-------------------------------

SE-4, 23 JAN 2025 to 20 FEB 2025

SE-4, 23 JAN 2025 to 20 FEB 2025



ELEV 841	TDZE 808
----------	----------



CATEGORY	A	B	C	D
RNP 0.30 DA	1401-1¼		593 (600-1¼)	

AUTHORIZATION REQUIRED

HIRL Rwy 8-26
REIL Rws 14, 26