

ZAAPA FIVE DEPARTURE (RNAV)

EC-2, 23 JAN 2025 to 20 FEB 2025

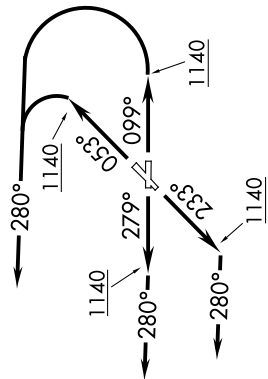
AWOS-3PT
119.225
CTAF
122.725
CLEVELAND DEP CON
125.35 346.325



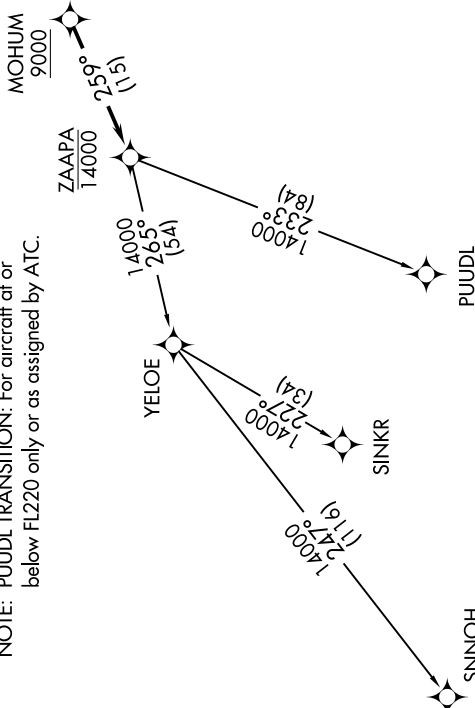
**TOP ALTITUDE:
ASSIGNED BY ATC**

TAKEOFF MINIMUMS:

Rwys 5, 10, 23, 28: Standard with a minimum climb of 500' per NM to 1140.



- NOTE: RADAR required.
- NOTE: RNAV 1.
- NOTE: DME/DME/IRU or GPS required.
- NOTE: PUIJDL TRANSITION: For aircraft at or below FL220 only or as assigned by ATC.



NOTE: Chart not to scale.

DEPARTURE ROUTE DESCRIPTION

TAKEOFF RUNWAY 5: Climb on heading 053° to 1140, then left turn heading 280° or as assigned by ATC for RADAR vectors to cross MOHUM at or above 9000, thence...
TAKEOFF RUNWAY 10: Climb on heading 099° to 1140, then left turn heading 280° or as assigned by ATC for RADAR vectors to cross MOHUM at or above 9000, thence...
TAKEOFF RUNWAY 23: Climb on heading 233° to 1140, then on heading 280° or as assigned by ATC for RADAR vectors to cross MOHUM at or above 9000, thence...
TAKEOFF RUNWAY 28: Climb on heading 279° to 1140, then on heading 280° or as assigned by ATC for RADAR vectors to cross MOHUM at or above 9000, thence...

...on track 259° to cross ZAAPA at or below 14000, then on (transition). Maintain ATC assigned altitude, expect filed altitude ten minutes after departure.

PUIJDL TRANSITION (ZAAPA5.PUIJDL)
 SINKR TRANSITION (ZAAPA5.SINKR)
 SNNOH TRANSITION (ZAAPA5.SNNOH)

ZAAPA FIVE DEPARTURE (RNAV)

EC-2, 23 JAN 2025 to 20 FEB 2025