

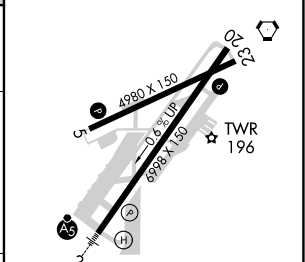
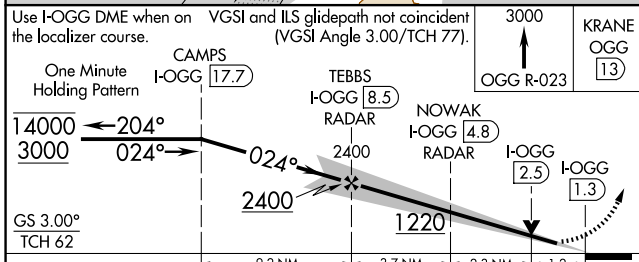
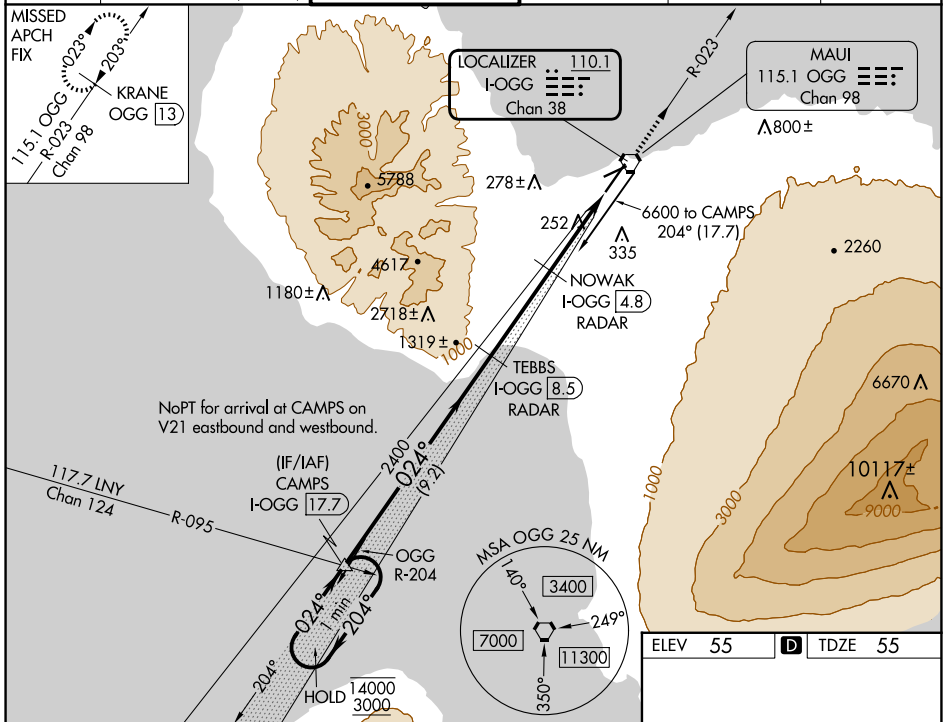
LOC/DME I-OGG <b>110.1</b> Chan 38	APP CRS <b>024°</b>	Rwy Idg TDZE Apt Elev <b>6995</b> <b>55</b> <b>55</b>
--	------------------------	--

# ILS Y or LOC Y RWY 2

KAHULUI (OGG)(PHOG)

DME required.		MALSR 	MISSED APPROACH: Climb to 3000 on OGG VORTAC R-023 to KRANE/OGG 13 DME and hold.
 For inop ALS, increase S-ILS 2 Cat E visibility to 3/4 SM, and S-LOC 2 Cats C/D/E visibility to 1 3/8 SM.			

ATIS <b>128.6</b>	HCF APPROACH <b>120.2 322.4</b> (NORTH) <b>119.5 225.4</b> (SOUTH)	MAUI TOWER ★ <b>118.7</b> (CTAF) <b>0 279.6</b>	GND CON <b>121.9 279.6</b>	CLNC DEL <b>120.6 290.5</b>	UNICOM <b>122.95</b>
----------------------	--	--	-------------------------------	--------------------------------	-------------------------



CATEGORY	A	B	C	D	E
S-ILS 2	275-1/2		220 (300-1/2)		
S-LOC 2	520-1/2	465 (500-1/2)		520-1 465 (500-1)	
CIRCLING	520-1 465 (500-1)	620-1 565 (600-1)	740-2 685 (700-2)	1140-3 1085 (1100-3)	1720-3 1665 (1700-3)

ELEV	55	TDZE	55
------	----	------	----

HIRL Rwy 2-20   
MIRL Rwy 5-23

PAC, 26 DEC 2024 to 20 FEB 2025

PAC, 26 DEC 2024 to 20 FEB 2025