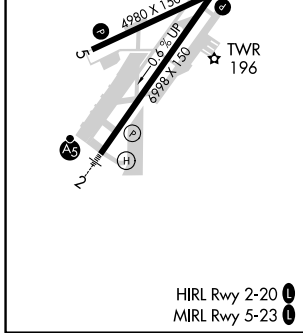
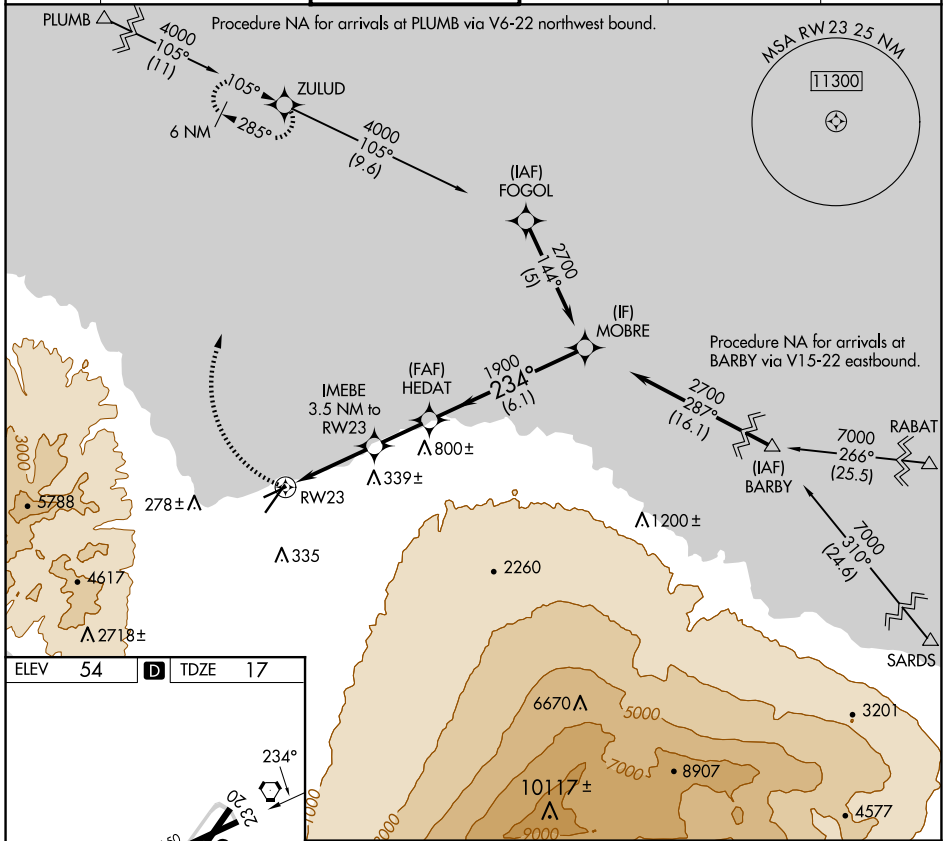


APP CRS 234°	Rwy Idg 4980
	TDZE 17
	Apt Elev 54

RNAV (GPS) RWY 23

KAHALUI (OGG)(PHOG)

▽	DME/DME RNP-0.3 NA.		MISSED APPROACH: Climbing right turn to 4000 direct ZULUD and hold, continue climb-in-hold to 4000.		
ATIS 128.6	HCF APPROACH 120.2 322.4 (NORTH) 119.5 225.4 (SOUTH)	MAUI TOWER ★ 118.7 (CTAF) 0 279.6	GND CON 121.9 279.6	CLNC DEL 120.6 290.5	UNICOM 122.95



4000	ZULUD	HEDAT	MOBRE	
	IMEBE 3.5 NM to RW23	1900	2700	
	RW23	1200	Procedure Turn NA	
	3.5 NM	2.2 NM	6.1 NM	
CATEGORY	A	B	C	D
LNAV MDA	460-1	443 (500-1)	460-1¼ 443 (500-1¼)	460-1½ 443 (500-1½)
C CIRCLING	500-1 446 (500-1)	620-1 566 (600-1)	780-2 726 (800-2)	1180-3 1126 (1200-3)

PAC, 26 DEC 2024 to 20 FEB 2025

PAC, 26 DEC 2024 to 20 FEB 2025