

MARYSVILLE, CALIFORNIA

# RNAV (GPS) RWY 33

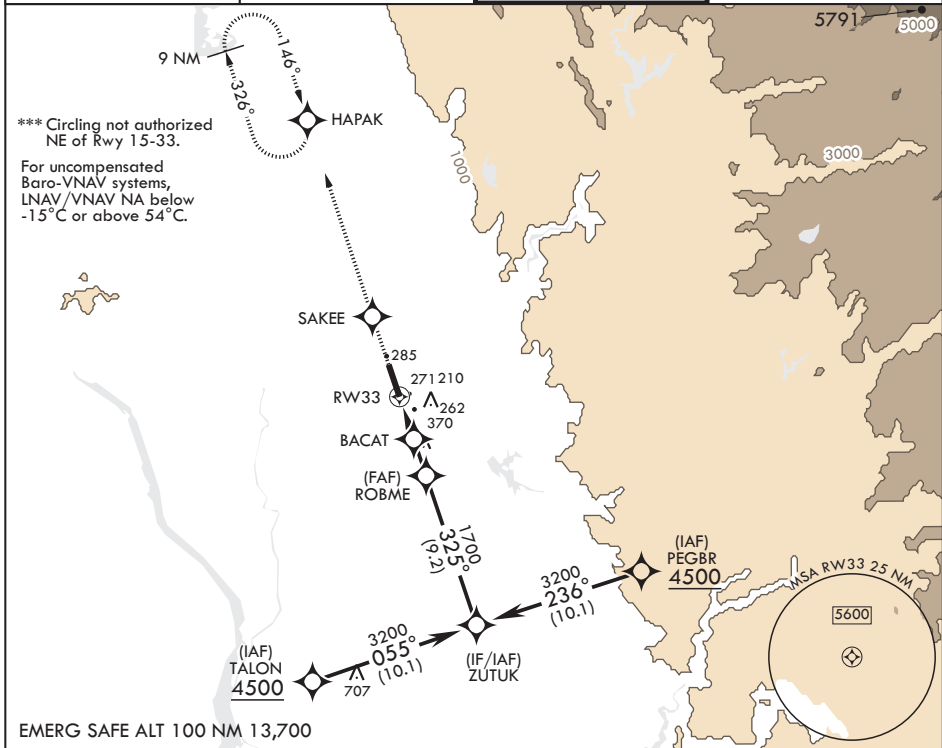
APCH CRS <b>325°</b>	Rwy Idg THRE Arprt Elev <b>12,001</b> <b>105</b> <b>113</b>
-------------------------	--

- (USAF)

BEALE AFB (KBAB)

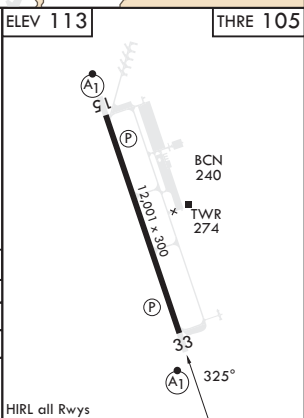
RNP APCH	ALSIF-1	MISSED APPROACH: Climb to 3600 direct SAKEE, track 326° to HAPAK and hold.
<p>▼ * When ALS inop, increase vis to 1 1/4 miles. ** When ALS inop, increase CAT AB RVR to 55 and vis to 1 mile, CAT CDE vis to 1 1/4 miles.</p>		

ATIS★ <b>124.55 273.5</b>	NORCAL APP CON <b>125.4 259.1</b>	TOWER★ <b>119.4 284.75</b>	GND CON <b>121.6 257.75</b>
------------------------------	--------------------------------------	-------------------------------	--------------------------------



EMERG SAFE ALT 100 NM 13,700

3600 SAKEE	ZUTUK					ELEV 113	THRE 105
CATEGORY	A	B	C	D	E		
LNAV/VNAV DA*	540/40		435	(500-¾)			
LNAV MDA**	540/24	435 (500-½)	540/40	435	(500-¾)		
CIRCLING***	600-1	487 (500-1)	600-1½ 487 (500-1½)	800-2¼ 687 (700-2¼)	800-2½ 687 (700-2½)		



MARYSVILLE, CALIFORNIA

39°08'N - 121°26'W

BEALE AFB (KBAB)

Amdt 2 22FEB24

# RNAV (GPS) RWY 33

SW-2, 23 JAN 2025 to 20 FEB 2025

SW-2, 23 JAN 2025 to 20 FEB 2025