

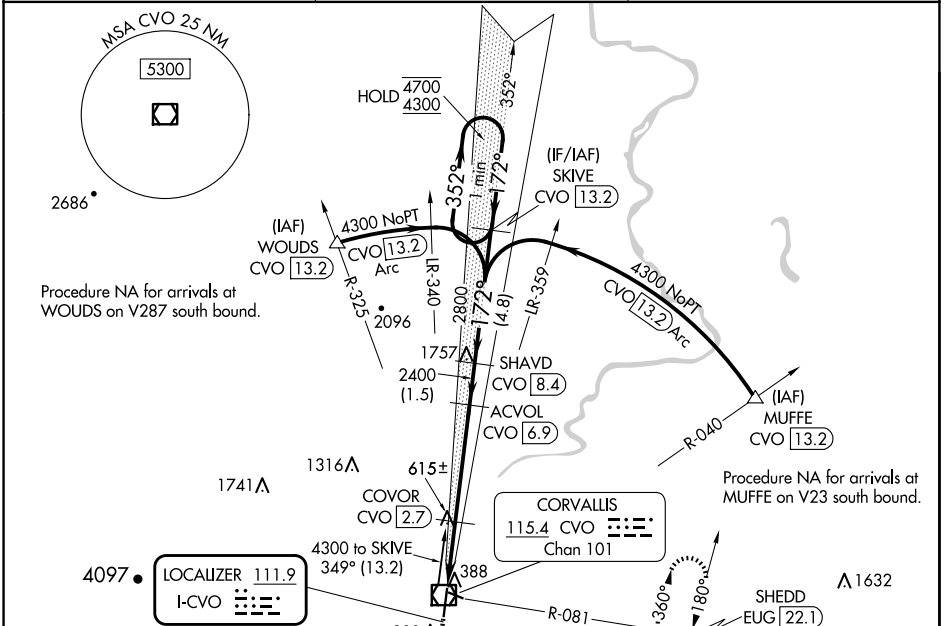
LOC I-CVO 111.9	APP CRS 172°	Rwy ldg 5900
		TDZE 248
		Apt Elev 250

ILS or LOC RWY 17

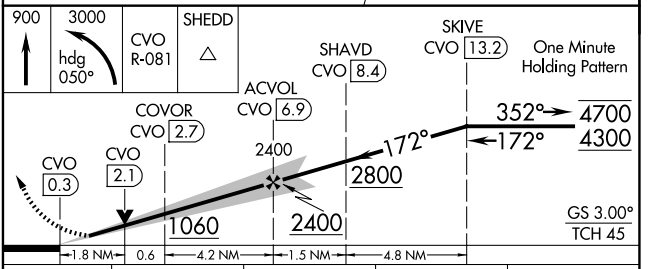
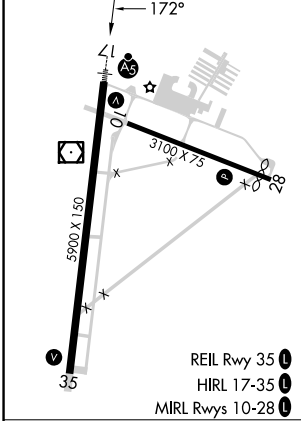
CORVALLIS MUNI (CVO)

DME required.	MALSR	MISSED APPROACH: Climb to 900 then climbing left turn to 3000 on heading 050° and on CVO VOR/DME R-081 to SHEDD INT/EUG 22.1 DME and hold, continue climb-in-hold to 3000.
<p>⚠ Circling Rwy 28 NA at night. For inop ALS, increase S-LOC 17 Cat C/D visibility to 1¼ SM. DME from CVO VOR/DME.</p> <p>⚠ DME use requires simultaneous reception of I-CVO and CVO DME.</p>		

AWOS-3PT 135.775	CASCADE APP CON ★ 127.5 348.7	UNICOM 123.075 (CTAF) ①
----------------------------	---	-----------------------------------



ELEV 250	D	TDZE 248
----------	---	----------



CATEGORY	A	B	C	D
S-ILS 17	448-½ 200 (200-½)			
S-LOC 17	880-½	632 (700-½)	880-1¾	632 (700-1¾)
CIRCLING	880-1	630 (700-1)	920-1¾ 670 (700-1¾)	1060-2½ 810 (900-2½)

Knots	60	90	120	150	180
Min:Sec	6:36	4:24	3:18	2:38	2:14

NW-1, 23 JAN 2025 to 20 FEB 2025

NW-1, 23 JAN 2025 to 20 FEB 2025