

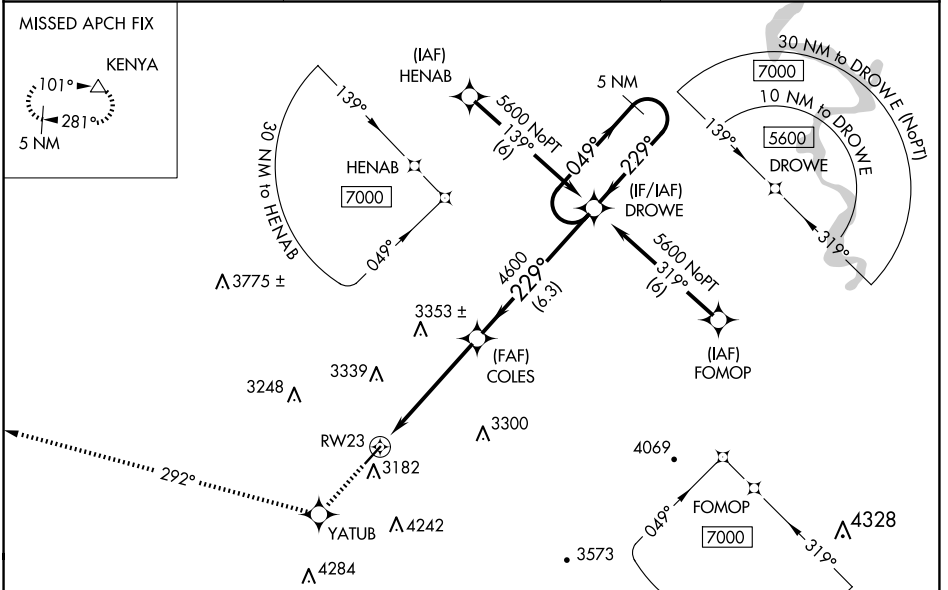
WAAS CH <b>50207</b> <b>W23A</b>	APP CRS <b>229°</b>	Rwy Idg <b>4743</b> TDZE <b>2856</b> Apt Elev <b>2857</b>
--	------------------------	---

# RNAV (GPS) RWY 23

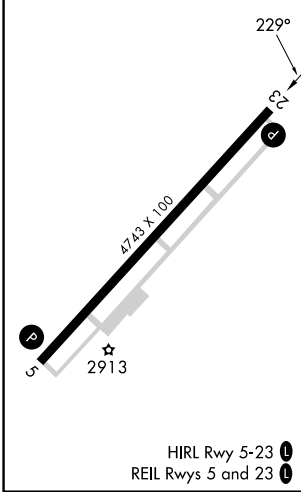
MERCER COUNTY (BLF)

RNP APCH.	MISSED APPROACH: Climb to 6000 direct YATUB and via track 292° to KENYA and hold.
<p><b>▼</b> VDP NA when using Beckley altimeter setting. When local altimeter setting not received, use Beckley altimeter setting and increase all DA 443 feet and all MDA 460 feet; increase LPV all Cats visibility to 2½ miles, LNAV Cat A visibility to 1¼ miles, Cat B to 1½ miles and Cat C and D to 3 miles.</p>	

ASOS <b>132.725</b>	INDIANAPOLIS CENTER <b>126.575 257.85</b>	CTAF <b>122.9</b>
------------------------	--	----------------------



ELEV 2857	D TDZE 2856
-----------	-------------



6000	YATUB	KENYA	VGSi and RNAV glidepath not coincident (VGSi Angle 3.00/TCH 65).	
↑	✧	tr 292°	△	
*LNAV only		COLES	DROWE	5 NM Holding Pattern
*2.3 NM to RW23		229°	049°	5600
2.3 NM		2.9 NM	6.3 NM	GP 3.00° TCH 58
CATEGORY	A	B	C	D
LPV DA	3156-1 300 (300-1)			
LNAV MDA	3640-1 784 (800-1)	3640-1¼ 784 (800-1¼)	3640-2¼ 784 (800-2¼)	3640-2½ 784 (800-2½)

NE-4, 23 JAN 2025 to 20 FEB 2025

NE-4, 23 JAN 2025 to 20 FEB 2025