

VOR/DME BLF 115.05 Chan 97 (Y)	APP CRS 225°	Rwy Idg TDZE Apt Elev	4743 2857 2857
--	------------------------	-----------------------------	---

VOR RWY 23

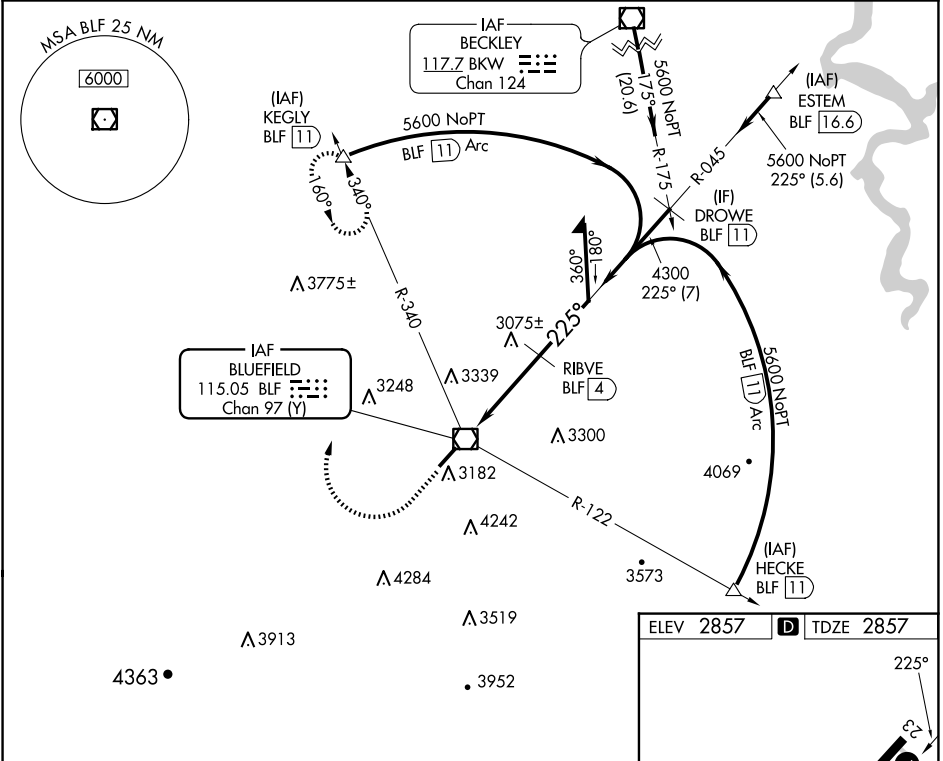
MERCER COUNTY (BLF)

DME required.

▼ When local altimeter setting not received, use Beckley altimeter setting and increase all MDAs 460 feet: increase S-23 visibility Cat A ¼ SM, Cat B ½ SM, Cat C 1 ½ SM, Cat D 1 ¼ SM; increase Circling visibility Cat A ¼ SM, Cat B ½ SM, Cat C ¾ SM. VDP NA when using Beckley altimeter setting. Circling NA southeast of Rwy 5-23.

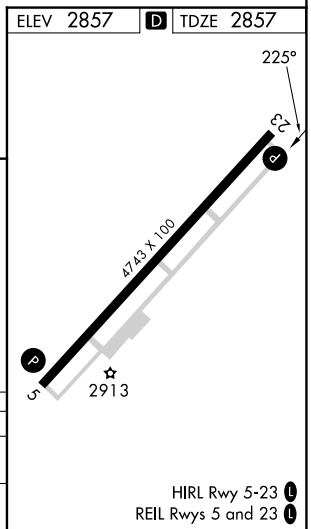
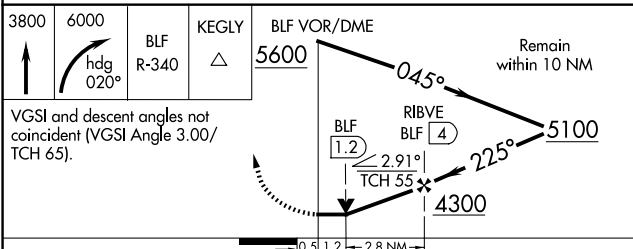
MISSED APPROACH: Climb to 3800 then climbing right turn to 6000 on heading 020° and BLF R-340 to KEGLY/BLF 11 DME and hold.

ASOS 132.725	INDIANAPOLIS CENTER 126.575 257.85	CTAF 122.9 ①
------------------------	--	------------------------



NE-4, 23 JAN 2025 to 20 FEB 2025

NE-4, 23 JAN 2025 to 20 FEB 2025



CATEGORY	A	B	C	D
S-23	3440-1	583 (600-1)	3440-1 ½ 583 (600-1 ½)	3440-1 ¾ 583 (600-1 ¾)
CIRCLING	3440-1 583 (600-1)	3460-1 603 (700-1)	3640-2 ¼ 783 (800-2 ¼)	3780-3 923 (1000-3)