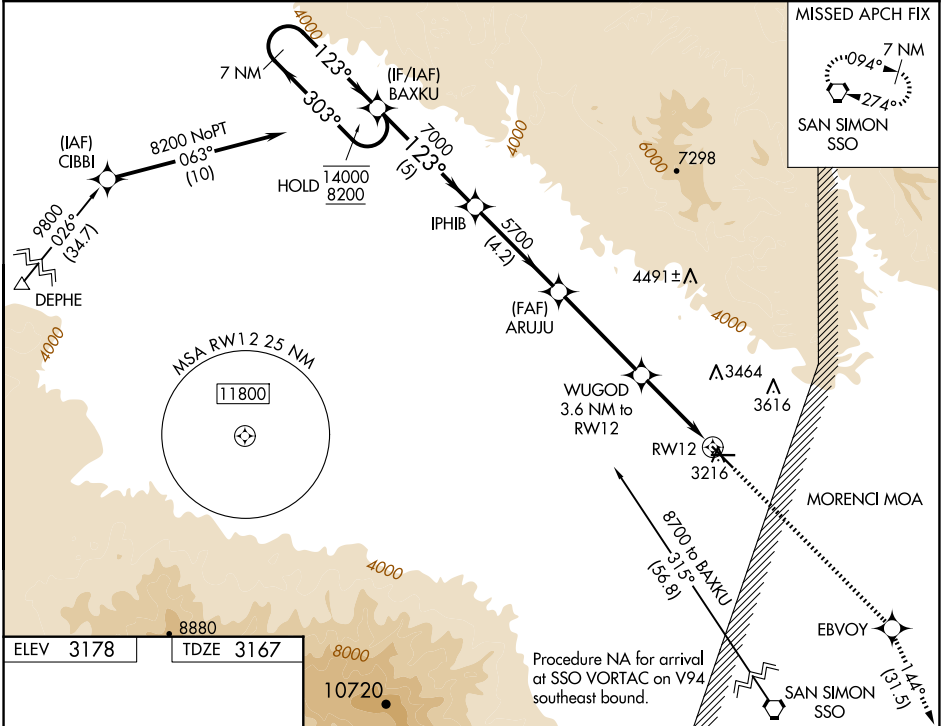


WAAS CH 69516 W12A	APP CRS 123°	Rwy Idg TDZE Apt Elev	6007 3167 3178
--	------------------------	-----------------------------	---

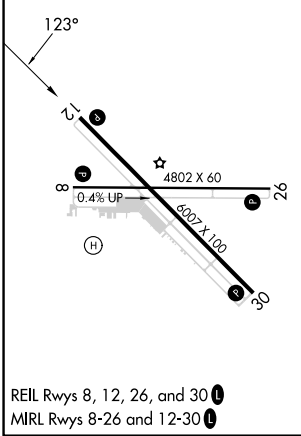
RNAV (GPS) RWY 12

SAFFORD RGNL/1LT DUANE SPALSBURY FLD (SAD)

RNP APCH - GPS.	ALBUQUERQUE CENTER 134.45 327.15	UNICOM 122.8 (CTAF) 0
<p>⚠ Circling to Rwy 8 NA at night. Circling NA northeast of Rwy 12 and north of Rwy 26. For uncompensated Baro-VNAV systems, LNAV/VNAV NA below -6°C or above 54°C.</p>	<p>MISSED APPROACH: Climb to 10000 direct EBVOY and on track 144° to SSO VORTAC and hold.</p>	



ELEV 3178	TDZE 3167
-----------	-----------



7 NM Holding Pattern 14000 ← 303° 8200 123° → GP 3.00° TCH 40	BAXKU	IPHIB	ARUJU	WUGOD	EBVOY	SSO
		5700	5700	3.6 NM to RWY 12	10000	144°
	5 NM	4.2 NM	4.2 NM	2.7 NM	1 NM	
CATEGORY	A	B	C	D		
LPV DA	3417-3/4 250 (300-3/4)					
LNAV/VNAV DA	3417-3/4 250 (300-3/4)					
LNAV MDA	3520-1 353 (400-1)					
CIRCLING	3580-1 402 (500-1)	3640-1 462 (500-1)	3640-1 1/2 462 (500-1 1/2)	3900-2 1/4 722 (800-2 1/4)		

SW-4, 23 JAN 2025 to 20 FEB 2025

SW-4, 23 JAN 2025 to 20 FEB 2025