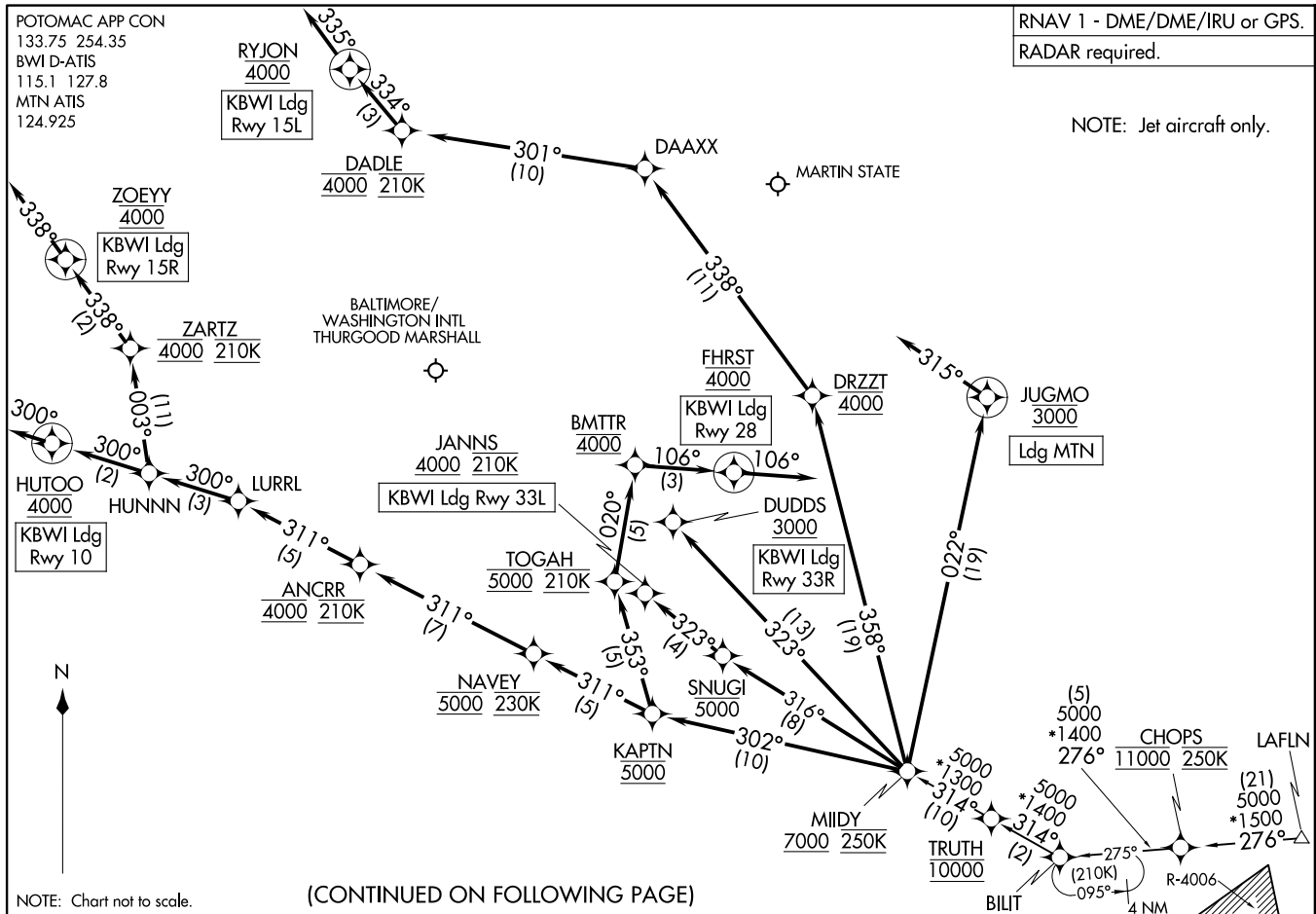


MIDDY THREE ARRIVAL (RNAV)  
(MIDDY.MIDDY3) 05SEP24

(MIDDY.MIDDY3) 24249  
MIDDY THREE ARRIVAL (RNAV)

AL-804 (FAA)

BALTIMORE, MARYLAND



(CONTINUED ON FOLLOWING PAGE)

BALTIMORE, MARYLAND

## ARRIVAL ROUTE DESCRIPTION

LAFLN TRANSITION (LAFLN.MIIDY3)

LANDING KBWI RUNWAY 10: From MIIDY on track 302° to cross KAPTN at 5000, then on track 311° to cross NAVVEY at 5000 and at 230K, then on track 311° to cross ANCRR at 4000 and at 210K, then on track 311° to LURRL, then on track 300° to HUNNN, then on track 300° to cross HUTOO at 4000, then on track 300°. Expect radar vectors to final approach course.

LANDING KBWI RUNWAY 15L: From MIIDY on track 358° to cross DRZZT at 4000, then on track 338° to DAAAX, then on track 301° to cross DADLE at 4000 and at 210K, then on track 334° to cross RYJON at 4000, then on track 335°. Expect radar vectors to final approach course.

LANDING KBWI RUNWAY 15R: From MIIDY on track 302° to cross KAPTN at 5000, then on track 311° to cross NAVVEY at 5000 and at 230K, then on track 311° to cross ANCRR at 4000 and at 210K, then on track 311° to LURRL, then on track 300° to HUNNN, then on track 003° to cross ZARTZ at 4000 and at 210K, then on track 337° to cross ZOEYY at 4000, then on track 338°. Expect radar vectors to final approach course.

LANDING KBWI RUNWAY 28: From MIIDY on track 302° to cross KAPTN at 5000, then on track 353° to cross TOGAH at 5000 and at 210K, then on track 020° to cross BMTTR at 4000, then on track 106° to cross FHRST at 4000, then on track 106°. Expect radar vectors to final approach course.

LANDING KBWI RUNWAY 33L: From MIIDY on track 316° to cross SNUGI at or below 5000, then on track 323° to cross JANNNS at or above 4000 and at 210K. Expect ILS or LOC Rwy 33L approach.

LANDING KBWI RUNWAY 33R: From MIIDY on track 323° to cross DUDDS at or above 3000. Expect ILS or LOC Rwy 33R approach.

LANDING KMTN: From MIIDY on track 022° to cross JUGMO at 3000, then on heading 315°. Expect radar vectors to final approach course.