

WAAS CH <b>61100</b> <b>W13A</b>	APP CRS <b>131°</b>	Rwy ldg TDZE Apt Elev	<b>9200</b> <b>358</b> <b>366</b>
--	------------------------	-----------------------------	---

# RNAV (GPS) RWY 13

EAST TEXAS RGNL (GGG)

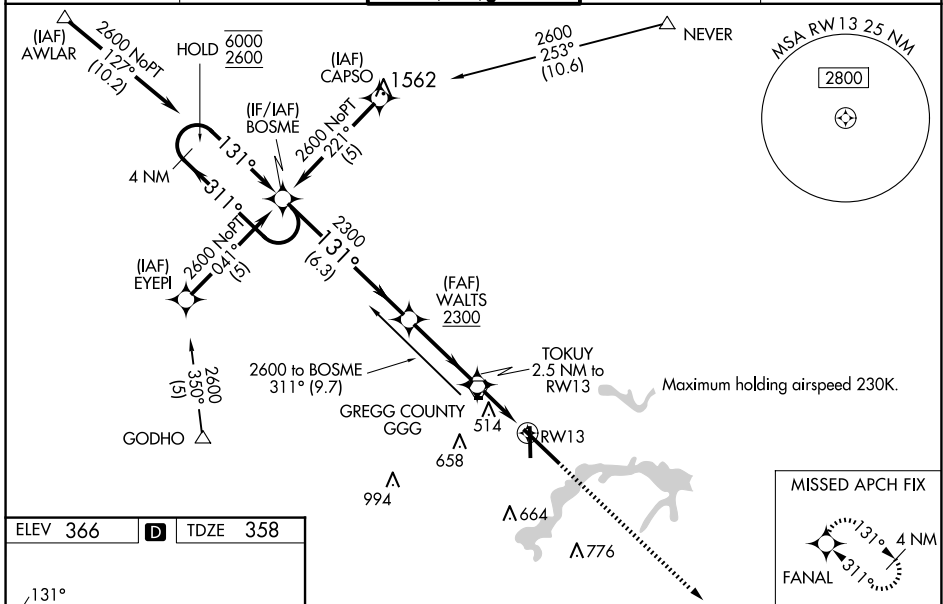
RNP APCH-GPS.

**⚠** Baro-VNAV and VDP NA when using Gilmer altimeter setting. For inop ALS, increase LPV Cat E visibility to RVR 4000, LNAV/VNAV all Cats visibility to RVR 5500, and LNAV Cat E visibility to 1 1/4 SM. When local altimeter setting not received use Gilmer altimeter setting and increase LPV DA to 671 feet; increase LNAV/VNAV DA to 785 feet; increase all MDA 60 feet, and LNAV visibility Cat C to RVR 5000, and Circling visibility Cats C/D/E 1/4 SM. For inop ALS when using Gilmer altimeter setting, increase LPV all Cats visibility to RVR 4500, LNAV/VNAV Cat E visibility to 1 1/4 SM, and LNAV Cats C/D/E visibility to 1 3/8 SM. For uncompensated Baro-VNAV systems, LNAV/VNAV NA below -15°C or above 54°C.

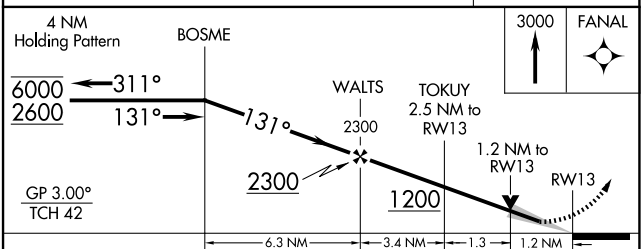
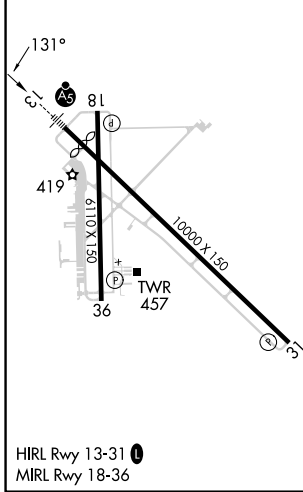


**MISSED APPROACH:**  
Climb to 3000 direct  
FANAL and hold.

ATIS <b>119.65</b>	LONGVIEW APP CON* <b>124.675 257.975</b>	EASTEX TOWER* <b>119.2 (CTAF) 377.05</b>	GND CON <b>121.6</b>	UNICOM <b>122.95</b>
-----------------------	---	---	-------------------------	-------------------------



ELEV 366	<b>D</b>	TDZE 358
----------	----------	----------



CATEGORY	A	B	C	D	E
LPV DA	612/24 254 (300-1/2)				
LNAV/VNAV DA	726/40 368 (400-3/4)				
LNAV MDA	780/24	422 (500-1/2)	780/40 422 (500-3/4)	780/50	422 (500-1)
CIRCLING	860-1	494 (500-1)	980-1 3/4 614 (700-1 3/4)	1080-2 1/4 714 (800-2 1/4)	1080-2 1/2 714 (800-2 1/2)

SC-2, 23 JAN 2025 to 20 FEB 2025

SC-2, 23 JAN 2025 to 20 FEB 2025