

APP CRS 356°	Rwy Idg 6109
	TDZE 365
	Apt Elev 366

RNAV (GPS) RWY 36

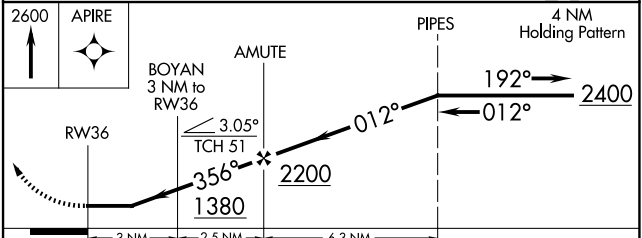
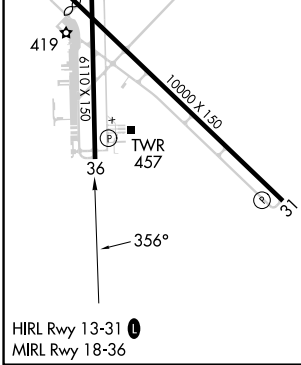
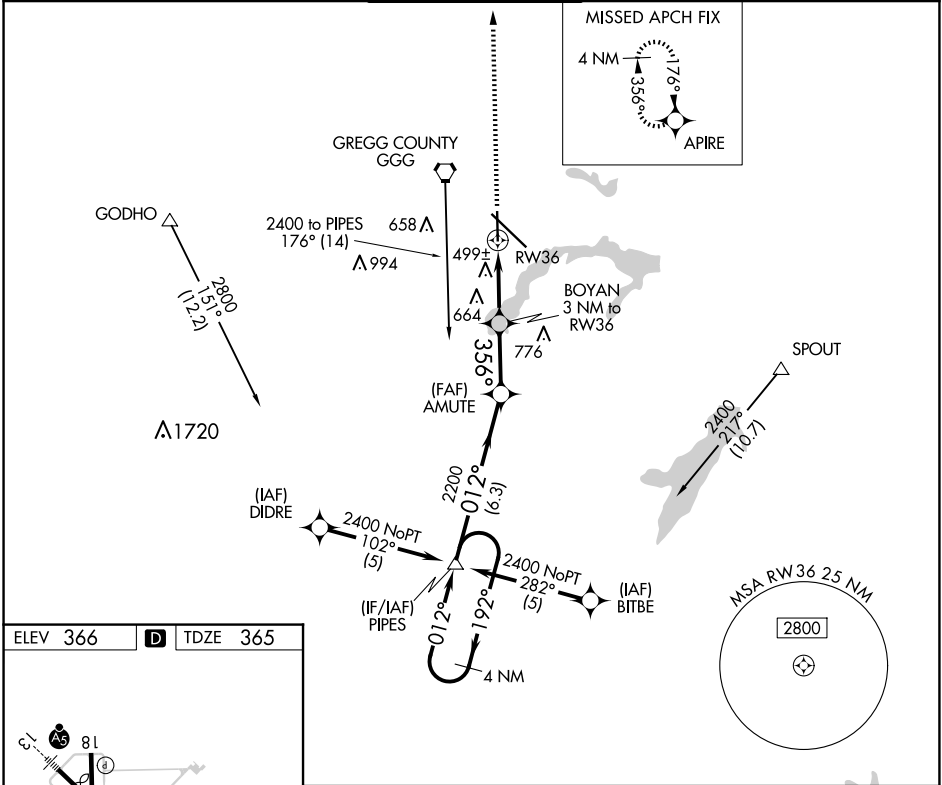
EAST TEXAS RGNL (GGG)

RNP APCH - GPS.

▼ Rwy 36 helicopter visibility reduction below 3/4 SM NA. When local altimeter setting not received, use Gilmer altimeter setting and increase all MDA 60 feet and LNAV and Circling Cats C/D visibility 1/4 SM.

MISSED APPROACH: Climb to 2600 direct APIRE and hold.

ATIS 119.65	LONGVIEW APP CON* 124.675 257.975	EASTEX TOWER* 119.2 (CTAF) 0377.05	GND CON 121.6	UNICOM 122.95
-----------------------	---	--	-------------------------	-------------------------



CATEGORY	A	B	C	D
LNAV MDA	760-1 395 (400-1)			760-1 1/4 395 (400-1 1/4)
CIRCLING	860-1 494 (500-1)		980-1 3/4 614 (700-1 1/4)	1080-2 1/4 714 (800-2 1/4)

SC-2, 23 JAN 2025 to 20 FEB 2025

SC-2, 23 JAN 2025 to 20 FEB 2025