

VORTAC GGG 112.9 Chan 76	APP CRS 125°	Rwy Idg TDZE Apt Elev	9200 358 366
---------------------------------------	------------------------	-----------------------------	---

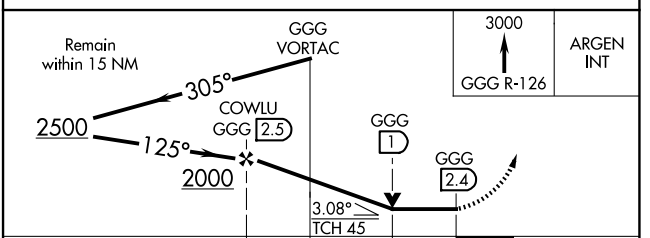
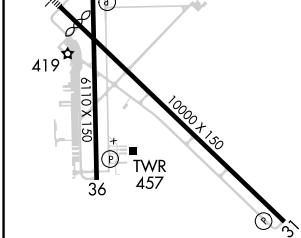
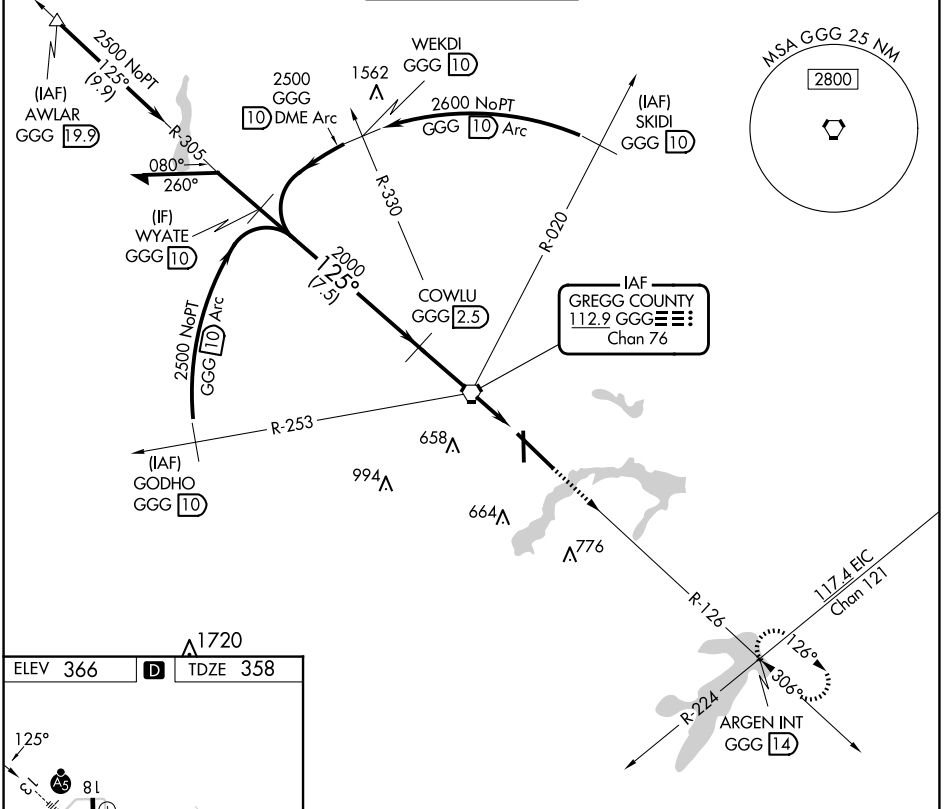
VOR/DME or TACAN RWY 13

EAST TEXAS RGNL (GGG)

⚠ For inop ALS, increase S-13 Cat C/D/E visibility to 1 $\frac{1}{2}$ SM. When local altimeter setting not received use Gilmer altimeter setting and increase all MDA 60 feet, S-13 and Circling Cats C/D/E visibility $\frac{1}{2}$ SM. VDP NA when using Gilmer altimeter setting. For inop ALS when using Gilmer altimeter setting increase S-13 Cat C/D/E visibility to 1 $\frac{1}{2}$ SM.

MALSRL
MISSED APPROACH:
Climb to 3000 via GGG R-126 to ARGEN Int/GGG 14 DME and hold.

ATIS 119.65	LONGVIEW APP CON* 124.675 257.975	EASTEX TOWER* 119.2(CTAF) 377.05	GND CON 121.6	UNICOM 122.95
-----------------------	---	--	-------------------------	-------------------------



CATEGORY	A	B	C	D	E
S-13	860/24 502 (500- $\frac{1}{2}$)		860/55 502 (500-1)		860/55 502 (500-1)
CIRCLING	860-1 494 (500-1)		980-1 $\frac{3}{4}$ 614 (700-1 $\frac{3}{4}$)	1080-2 $\frac{1}{4}$ 714 (600-2 $\frac{1}{4}$)	1080-2 $\frac{1}{2}$ 714 (800-2 $\frac{1}{2}$)

SC-2, 23 JAN 2025 to 20 FEB 2025

SC-2, 23 JAN 2025 to 20 FEB 2025