


LOC/DME I-HRL 111.5 Chan 52	APP CRS 178°	Rwy Idg 9400 TDZE 35 Apt Elev 36
---	------------------------	---

ILS RWY 18R (SA CAT I & II)

VALLEY INTL (HRL)

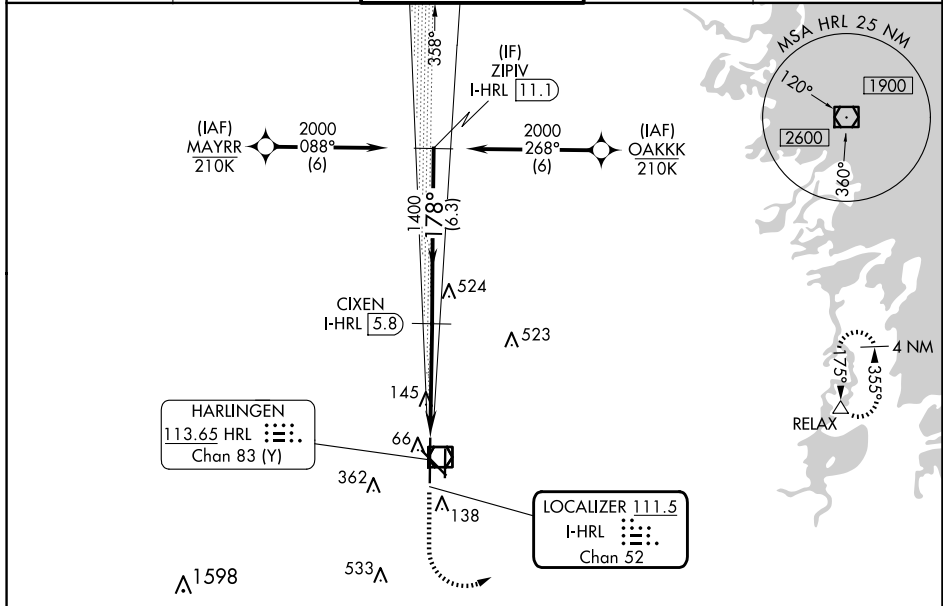
RNP APCH - GPS.

Requires specific OPSPEC, MSPEC, or LOA approval.
Procedure NA when tower closed.

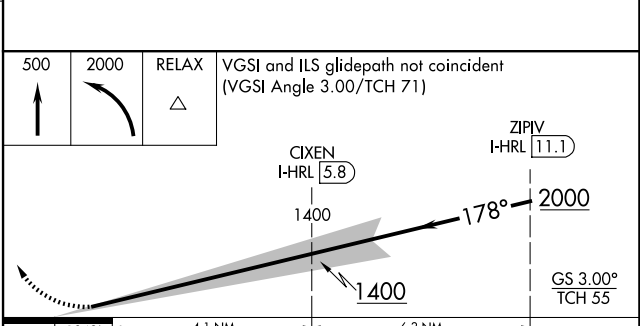
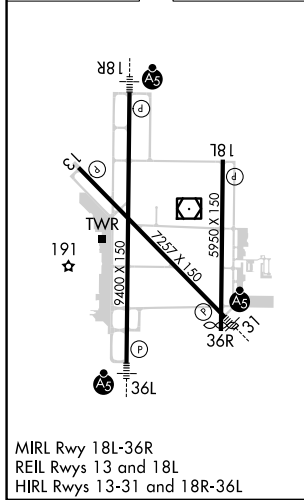
MALSR 

MISSED APPROACH: Climb to 500 then climbing left turn to 2000 direct RELAX and hold.

ATIS 124.85	VALLEY APP CON 120.7 279.5	HARLINGEN TOWER ★ 119.3 (CTAF) 317.6	GND CON 121.7	UNICOM 122.95
-----------------------	--------------------------------------	--	-------------------------	-------------------------



ELEV 36	D	TDZE 35
----------------	----------	----------------



	1.049	4.1 NM	6.3 NM	
CATEGORY	A	B	C	D
S-ILS 18R	SA CAT I	RA 153/14	150	DA 185
S-ILS 18R	SA CAT II	RA 104/12	100	DA 135

CATEGORY I & II ILS - SPECIAL AIRCREW & AIRCRAFT CERTIFICATION REQUIRED

SC-3, 23 JAN 2025 to 20 FEB 2025

SC-3, 23 JAN 2025 to 20 FEB 2025