

WAAS CH 72830 W36A	APP CRS 358°	Rwy Idg TDZE 36 Apt Elev 36	5759
--	------------------------	---	-------------

RNAV (GPS) RWY 36R

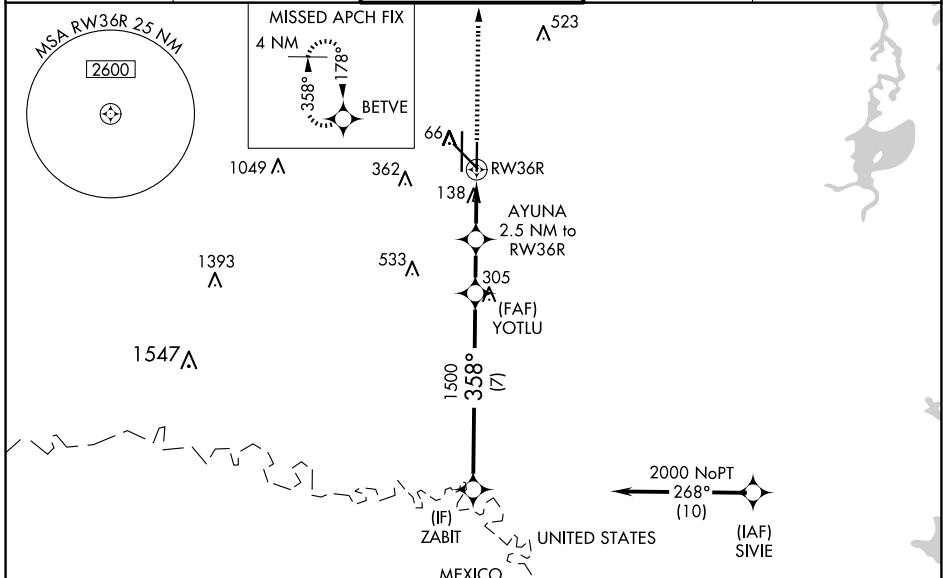
VALLEY INTL (HRL)

RNP APCH - GPS.

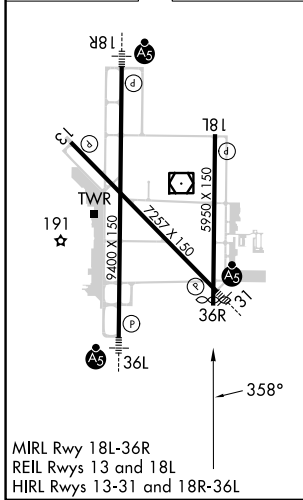
⚠ For uncompensated Baro-VNAV systems, LNAV/VNAV NA below -1°C or above 54°C. Baro-VNAV and VDP NA when using Port Isabel altimeter setting. When local altimeter setting not received, use Port Isabel altimeter setting: increase LPV DA to 278 feet; increase LNAV/VNAV DA to 328 feet and all visibilities ½ SM, increase all MDAs 60 feet and LNAV visibility Cat C and D ½ SM, and Circling visibility Cats C and D ¼ SM.

MISSED APPROACH: Climb to 2000 direct BETVE and hold.

ATIS 124.85	VALLEY APP CON 120.7 279.5	HARLINGEN TOWER ★ 119.3 (CTAF) 317.6	GND CON 121.7	UNICOM 122.95
-----------------------	--------------------------------------	--	-------------------------	-------------------------



ELEV 36	D	TDZE 36
----------------	----------	----------------



HARLINGEN, TEXAS
Amdt 1 11JUL24

2000	BETVE	AYUNA 2.5 NM to RWY36R	YOTLU 1500	ZABIT	2000
		1 NM to RWY36R			
		880	1500		GP 3.00° TCH 35
		1 NM	1.5 NM	2 NM	7 NM
CATEGORY	A	B	C	D	
LPV DA		236-¾	200 (200-¾)		
LNAV/VNAV DA		286-¾	250 (300-¾)		
LNAV MDA		400-1	364 (400-1)		
C CIRCLING	460-1 424 (500-1)	560-1 524 (600-1)	600-1½ 564 (600-1½)	680-2 644 (700-2)	

RNAV (GPS) RWY 36R

SC-3, 23 JAN 2025 to 20 FEB 2025

SC-3, 23 JAN 2025 to 20 FEB 2025