

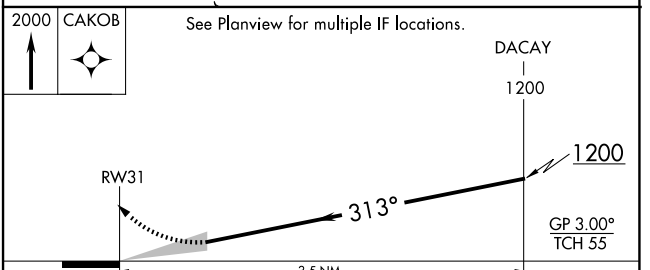
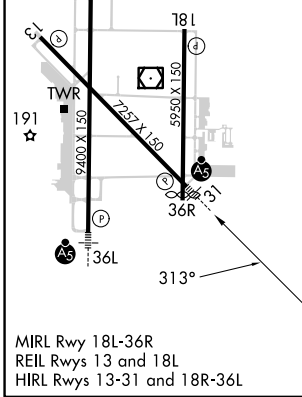
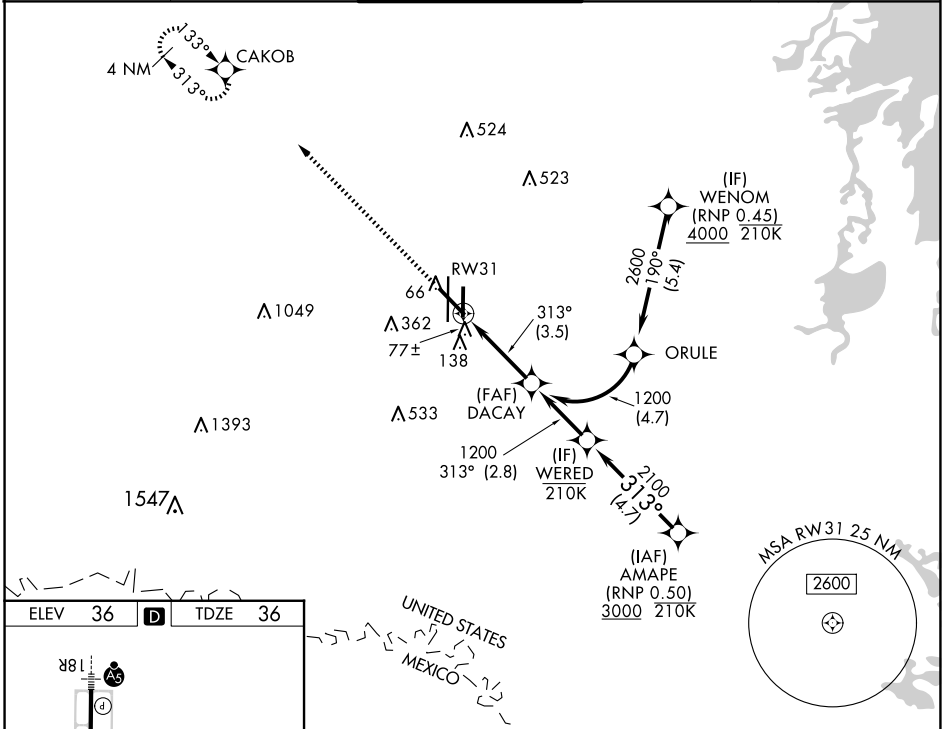
APP CRS	Rwy Idg	<b>7257</b>
<b>313°</b>	TDZE	<b>36</b>
	Apt Elev	<b>36</b>

# RNAV (RNP) Z RWY 31

VALLEY INTL (HRL)

RNP AR APCH - GPS.		MALSR	MISSED APPROACH: Climb to 2000 direct CAKOB and hold.
<p>▼ For uncompensated Baro-VNAV systems, procedure NA below -1°C or above 54°C. For inop ALS, increase RNP 0.11 all Cats visibilities to ¾ SM and increase RNP 0.30 all Cats visibilities ⅞ SM. When local altimeter setting not received, procedure NA.</p>			

ATIS <b>124.85</b>	VALLEY APP CON <b>120.7 279.5</b>	HARLINGEN TOWER ★ <b>119.3(CTAF) 317.6</b>	GND CON <b>121.7</b>	UNICOM <b>122.95</b>
-----------------------	--------------------------------------	---	-------------------------	-------------------------



CATEGORY	A	B	C	D
RNP 0.11 DA		286-½	250 (300-½)	
RNP 0.30 DA		339-½	303 (400-½)	

**AUTHORIZATION REQUIRED**

SC-3, 23 JAN 2025 to 20 FEB 2025

SC-3, 23 JAN 2025 to 20 FEB 2025