

WAAS CH <b>82530</b> <b>W31A</b>	APP CRS <b>313°</b>	Rwy Idg <b>7257</b> TDZE <b>36</b> Apt Elev <b>36</b>
--	------------------------	---

# RNAV (GPS) Y RWY 31

VALLEY INTL (HRL)

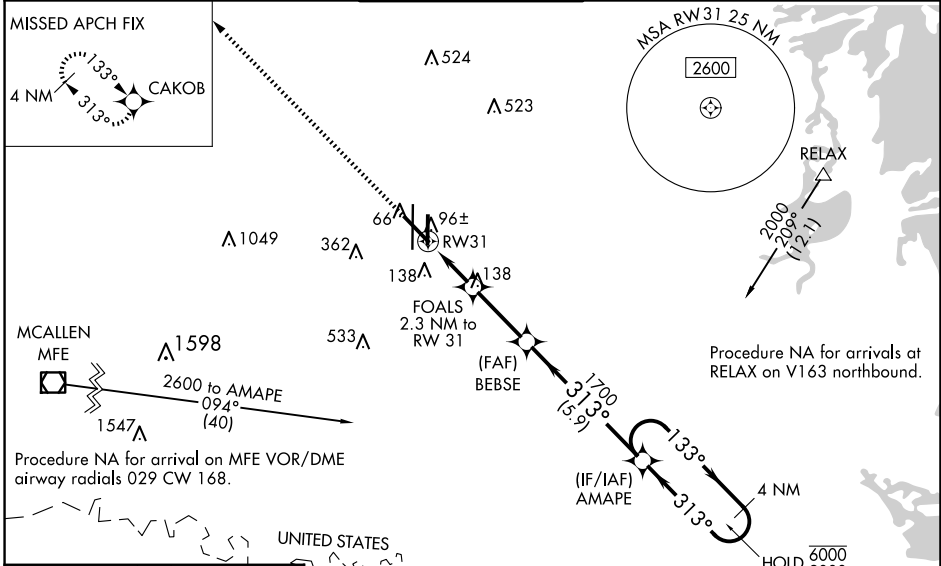
**RNP APCH - GPS.**

▼ For uncompensated Baro-VNAV systems, LNAV/VNAV NA below -1°C or above 54°C.  
 ▲ Baro-VNAV and VDP NA when using Port Isabel altimeter setting. For inop ALS, increase LNAV/VNAV all Cats visibilities to ¾ SM. For inop ALS when using Port Isabel altimeter setting, increase LNAV/VNAV all Cats visibilities to 7/8 SM. When local altimeter setting not received, use Port Isabel altimeter setting; increase LPV DA to 278 feet; increase LNAV/VNAV DA to 328 feet; increase all MDAs 60 feet and LNAV visibility Cats C and D ¼ SM and Circling visibility Cat C and D ¼ SM.

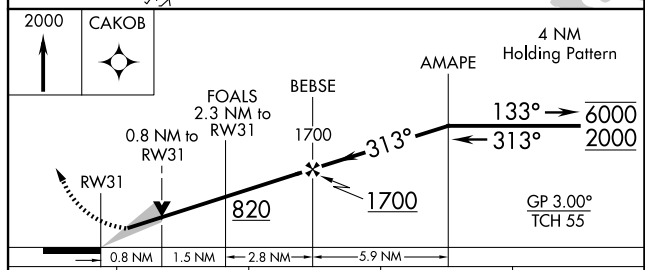
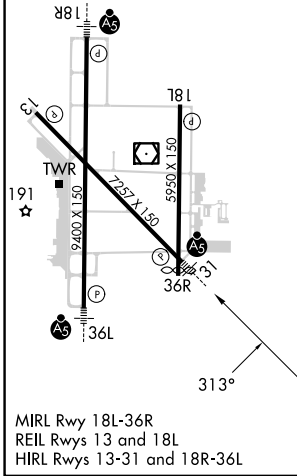


**MISSED APPROACH:**  
Climb to 2000 direct CAKOB and hold.

<b>ATIS</b> <b>124.85</b>	<b>VALLEY APP CON</b> <b>120.7 279.5</b>	<b>HARLINGEN TOWER ★</b> <b>119.3 (CTAF) 317.6</b>	<b>GND CON</b> <b>121.7</b>	<b>UNICOM</b> <b>122.95</b>
------------------------------	---	---	--------------------------------	--------------------------------



ELEV 36	<b>D</b>	TDZE 36
---------	----------	---------



CATEGORY	A	B	C	D
LPV DA		236-½	200 (200-½)	
LNAV/VNAV DA		286-½	250 (300-½)	
LNAV MDA		360-½	324 (400-½)	
<b>C</b> CIRCLING	460-1	560-1	600-1½	680-2
	424 (500-1)	524 (600-1)	564 (600-1½)	644 (700-2)

SC-3, 23 JAN 2025 to 20 FEB 2025

SC-3, 23 JAN 2025 to 20 FEB 2025