

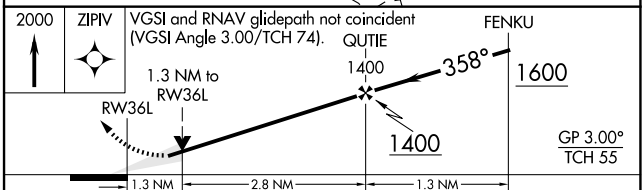
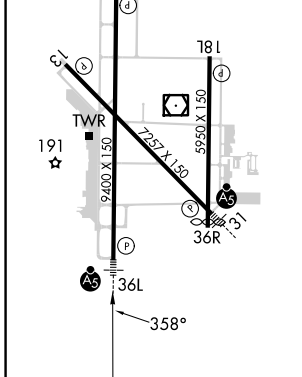
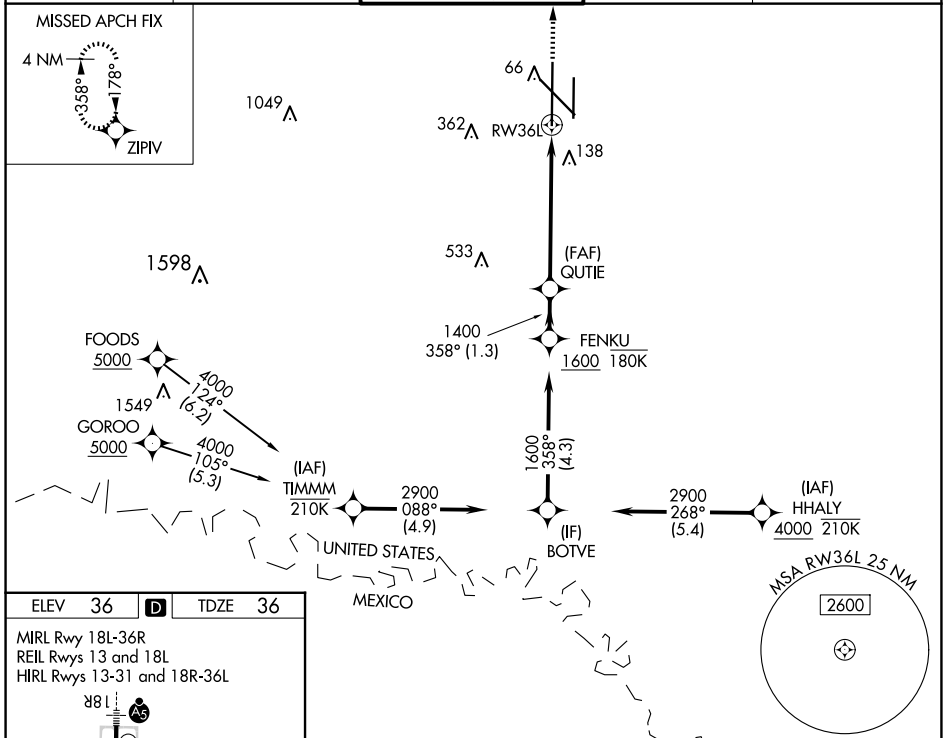
WAAS CH <b>86530</b> <b>W36B</b>	APP CRS <b>358°</b>	Rwy Idg TDZE <b>36</b> Apt Elev <b>36</b>	<b>9400</b>
--	------------------------	---	-------------

# RNAV (GPS) Y RWY 36L

VALLEY INTL (H.R.L.)

RNP APCH - GPS.	MALS R	MISSED APPROACH: Climb to 2000 direct ZIPIV and hold.
<p>⚠ For uncompensated Baro-VNAV systems, LNAV/VNAV NA below -1°C or above 54°C. Baro-VNAV and VDP NA when using Port Isabel altimeter setting. When local altimeter setting not received, use Port Isabel altimeter setting and increase LPV DA to 278 feet; increase LNAV/VNAV DA to 447 feet and all visibilities ½ SM. Increase all MDAs 60 feet, and LNAV visibility Cat C and D ¼ SM; and Circling visibility Cats C and D ¼ SM.</p>		

ATIS <b>124.85</b>	VALLEY APP CON <b>120.7 279.5</b>	HARLINGEN TOWER ★ <b>119.3(CTAF) 317.6</b>	GND CON <b>121.7</b>	UNICOM <b>122.95</b>
-----------------------	--------------------------------------	---	-------------------------	-------------------------



CATEGORY	A	B	C	D
LPV DA		236-¾	200 (200-¾)	
LNAV/VNAV DA		405-1	369 (400-1)	
LNAV MDA	500-1	464 (500-1)	500-1⅓	464 (500-1⅓)
CIRCLING	500-1 464 (500-1)	560-1 524 (600-1)	600-1½ 564 (600-1½)	680-2 644 (700-2)

SC-3, 23 JAN 2025 to 20 FEB 2025

SC-3, 23 JAN 2025 to 20 FEB 2025