

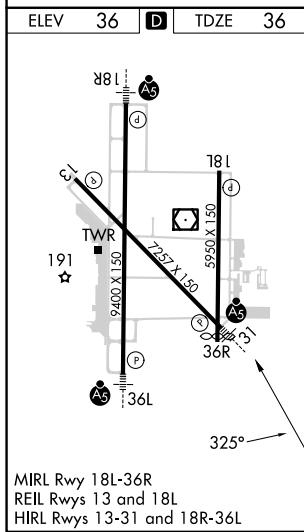
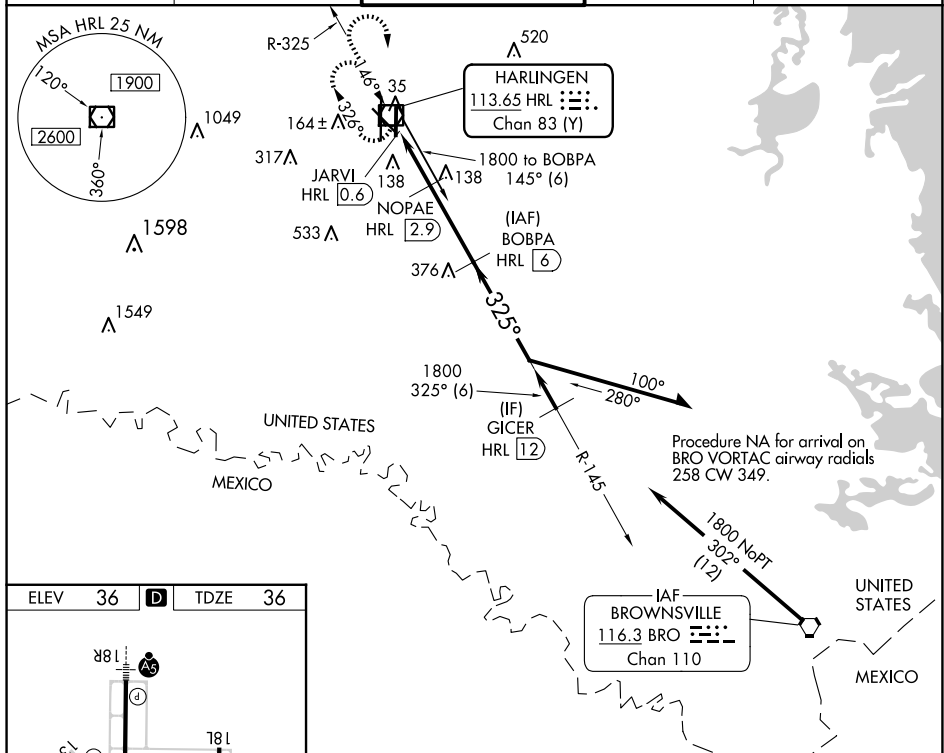
VOR/DME HRL	APP CRS	Rwy Idg	7257
113.65	325°	TDZE	36
Chan 83 (Y)		Apt Elev	36

VOR Z RWY 31

VALLEY INTL (HRL)

DME required.		MALSR 	MISSED APPROACH: Climb to 1000 then climbing right turn to 2100 direct HRL VOR/DME and hold, continue climb and hold to 2100.
	VDP NA when using Port Isabel altimeter setting. When local altimeter setting not received, use Port Isabel altimeter setting and increase all MDAs 60 feet and S-31 visibility Cat C/D 1/8 SM, and Circling visibility Cat C/D 1/4 SM. For inop ALS, increase S-31 Cats C/D visibilities to 1/8 SM.		

ATIS 124.85	VALLEY APP CON 120.7 279.5	HARLINGEN TOWER ★ 119.3 (CTAF) 317.6	GND CON 121.7	UNICOM 122.95
-----------------------	--------------------------------------	---	-------------------------	-------------------------



ELEV 36	TDZE 36	Remain within 10 NM			
1000	2100	HRL	NOPAE HRL 2.9	BOBPA HRL 6	
JARVI HRL 0.6		JARVI HRL 1.7	JARVI HRL 2.9	1800	145°
1800		325°	1800	1800	
1800		300°	TCH 55		
1 NM		1.2 NM	3.1 NM		
CATEGORY	A	B	C	D	
S-31	420-1/2	384 (400-1/2)	420-3/4	384 (400-3/4)	
CIRCLING	460-1	560-1	600-1/2	680-2	
	424 (500-1)	524 (600-1)	564 (600-1/2)	644 (700-2)	

SC-3, 23 JAN 2025 to 20 FEB 2025

SC-3, 23 JAN 2025 to 20 FEB 2025