

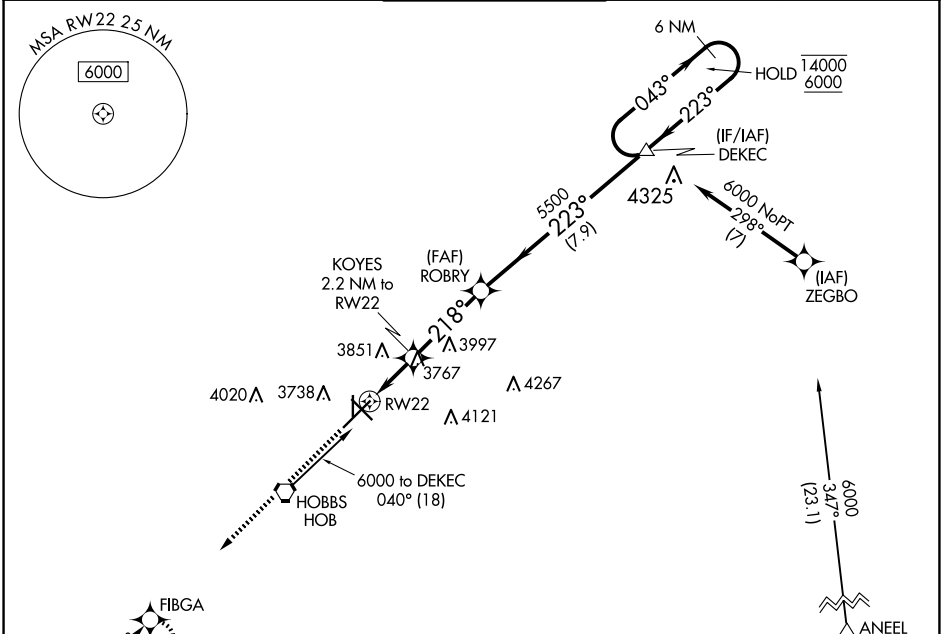
WAAS CH <b>82735</b> <b>W22A</b>	APP CRS <b>218°</b>	Rwy Idg TDZE Apt Elev	<b>8000</b> <b>3649</b> <b>3661</b>
--	------------------------	-----------------------------	---

# RNAV (GPS) RWY 22

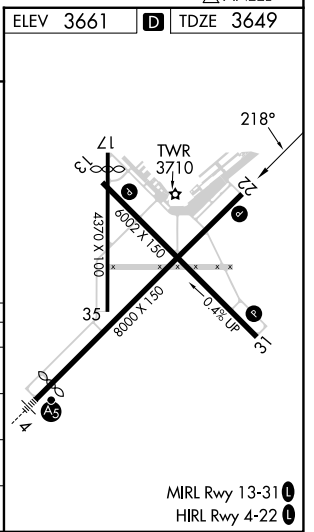
LEA COUNTY RGNL (HOB)

RNP APCH - GPS.	MISSED APPROACH: Climb to 5600 direct FIBGA and hold.
Circling Rwy 17, 35 NA at night. For uncompensated Baro-VNAV systems, LNAV/VNAV NA below -12°C or above 54°C.	

ATIS <b>119.75</b>	FORT WORTH CENTER <b>133.1 298.95</b>	HOBBS TOWER ★ <b>120.65 (CTAF) 317.4</b>	GND CON <b>121.9</b>	UNICOM <b>122.95</b>
-----------------------	--	---	-------------------------	-------------------------



5600	FIBGA	ROBY	DEKEC	6 NM Holding Pattern
↑		KOYES 2.2 NM to RW22	5500	14000 6000
		1 NM to RW22	223°	043° →
		RW22	218°	← 223°
		4400	5500	GP 3.00° TCH 44
		1 NM	1.2 NM	3.5 NM
				7.9 NM
CATEGORY	A	B	C	D
LPV DA		3899-3/4	250 (300-3/4)	
LNAV/VNAV DA		3899-3/4	250 (300-3/4)	
LNAV MDA		4020-1	371 (400-1)	
CIRCLING	4120-1 459 (500-1)	4160-1 499 (500-1)	4440-2 1/4 779 (800-2 1/4)	4440-2 1/2 779 (800-2 1/2)



SW-1, 23 JAN 2025 to 20 FEB 2025

SW-1, 23 JAN 2025 to 20 FEB 2025