

NDB RWY 36

TUPELO RGNL (TUP)

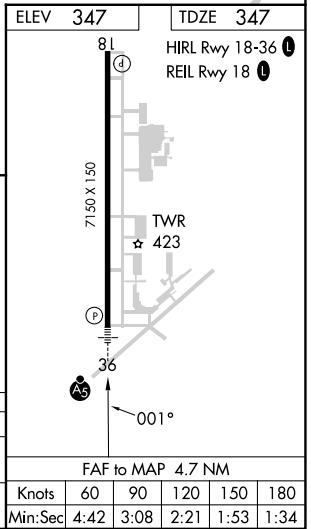
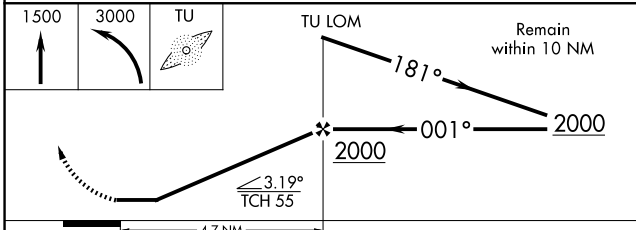
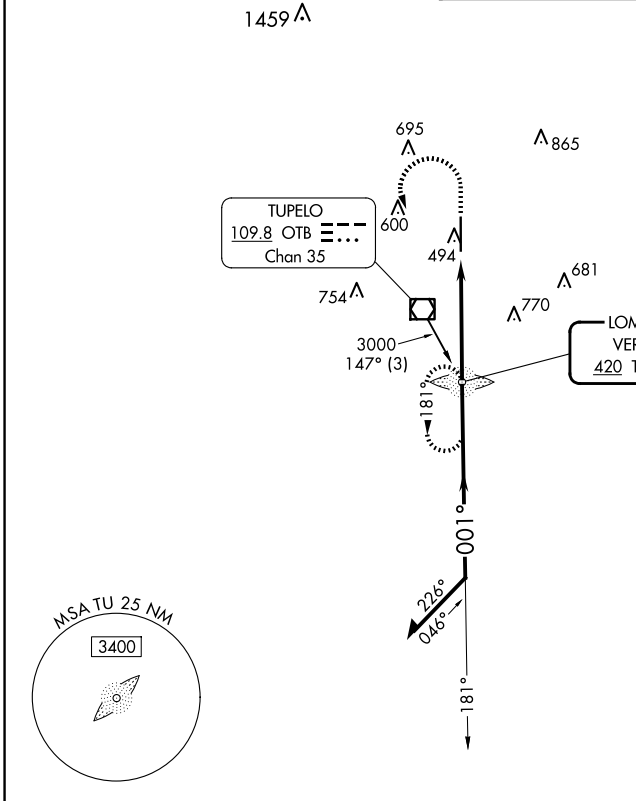
LOM TU 420	APP CRS 001°	Rwy Idg 7150
		TDZE 347
		Apt Elev 347

When local altimeter setting not received, use Columbus AFB altimeter setting and increase all MDA 120 feet, increase S-36 Cats C and D visibility 3/8 SM and Circling Cats C and D 1/2 SM. For inop ALS, increase S-36 Cat A and B visibility to 1 SM and Cat C and D to 1 3/8 SM. For inop ALS when using Columbus AFB altimeter setting, increase S-36 Cat A and B visibility to 1 SM and Cat C and D to 1 3/4 SM.



MISSED APPROACH:
Climb to 1500 then climbing left turn to 3000 direct TU LOM and hold.

ASOS 133.525	MEMPHIS CENTER 128.5 279.55	TUPELO TOWER ★ 118.775 (CTAF) 254.275	GND CON 121.825 254.275
------------------------	---------------------------------------	---	-----------------------------------



CATEGORY	A	B	C	D
S-36	840-3/4 493 (500-3/4)		840-1 493 (500-1)	
CIRCLING	840-1 493 (500-1)		900-1 1/2 553 (600-1 1/2)	1140-2 1/2 793 (800-2 1/2)

Knots	60	90	120	150	180
Min:Sec	4:42	3:08	2:21	1:53	1:34

SC-4, 23 JAN 2025 to 20 FEB 2025

SC-4, 23 JAN 2025 to 20 FEB 2025