

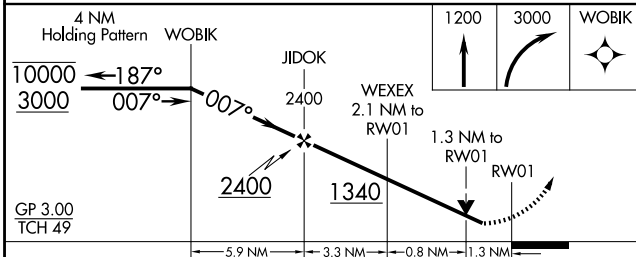
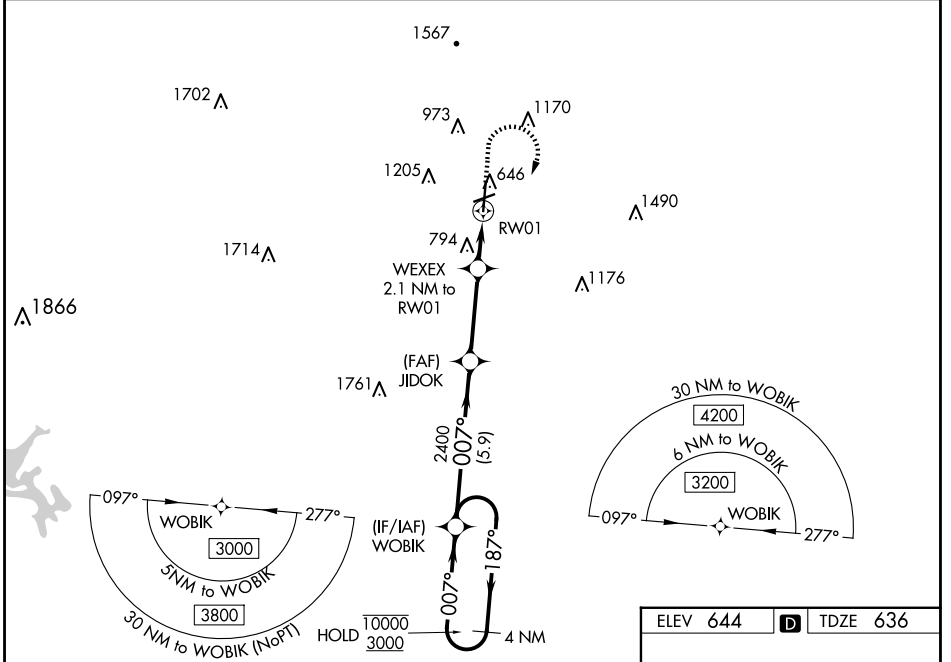
WAAS CH 78441 W01A	APP CRS 007°	Rwy Idg 6006 TDZE 636 Apt Elev 644
--	------------------------	--

RNAV (GPS) RWY 1

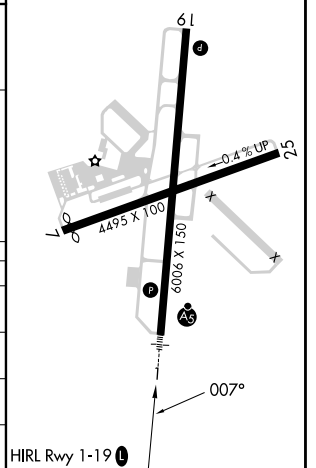
RICHARD B RUSSELL RGNL - J H TOWERS FLD (RMG)

RNP APCH - GPS. ▼ Rwy 1 helicopter visibility reduction below 3/4 SM NA. For uncompensated Baro-VNAV systems, LNAV/VNAV NA below -7°C or above 54°C. Circling NA west of Rwy 1-19 at night. Circling NA northwest of Rwy 7 and 19. For inop ALS, increase LPV all Cats visibility to 3/4 SM, LNAV/VNAV all Cats visibility to 1 SM, LNAV Cats A/B visibility to 1 SM, and LNAV Cats C/D visibility to 1 3/4 SM.	MALSR AS	MISSED APPROACH: Climb to 1200 then climbing right turn to 3000 direct WOBIK and hold.
--	-------------	---

ASOS 119.925	ATLANTA CENTER 124.5 270.325	GCO 121.725	UNICOM 122.725 (CTAF) 0
------------------------	--	-----------------------	-----------------------------------



ELEV 644	D	TDZE 636
----------	---	----------



CATEGORY	A	B	C	D
LPV DA		941-3/4	305 (300-3/4)	
LNAV/VNAV DA		980-3/4	344 (400-3/4)	
LNAV MDA	1100-3/4 464 (500-3/4)		1100-1 464 (500-1)	
CIRCLING	1140-1 496 (500-1)	1200-1 556 (600-1)	1480-2 1/2 836 (900-2 1/2)	1840-3 1196 (1200-3)

SE-4, 23 JAN 2025 to 20 FEB 2025

SE-4, 23 JAN 2025 to 20 FEB 2025