

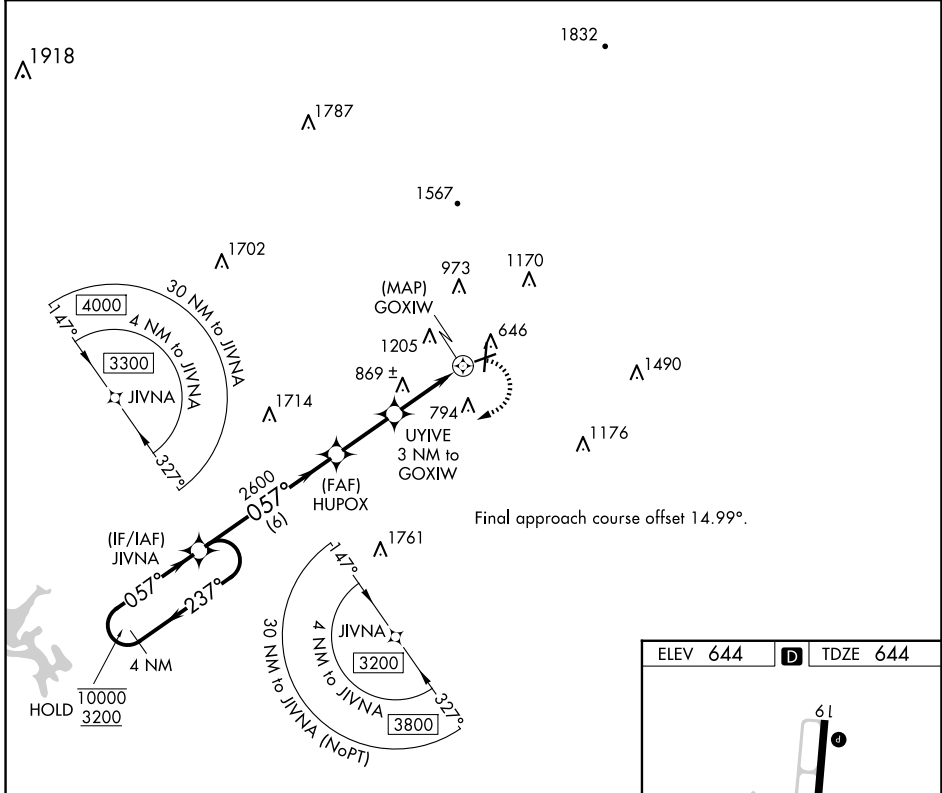
APP CRS	Rwy ldg	4380
057°	TDZE	644
	Apt Elev	644

RNAV (GPS) RWY 7

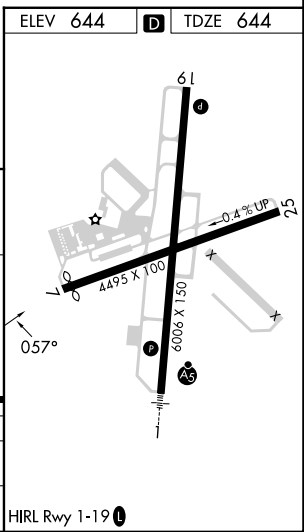
RICHARD B RUSSELL RGNL - J H TOWERS FLD (RMG)

RNP APCH - GPS.		MISSED APPROACH: Climbing right turn to 3200 direct JIVNA and hold.	
<p>▼ Rwy 7 helicopter visibility reduction below 3/4 SM NA. ▲ Straight-in minimums NA at night. Circling NA northwest of Rwy 7 and 19.</p>			

ASOS 119.925	ATLANTA CENTER 124.5 270.325	GCO 121.725	UNICOM 122.725 (CTAF)
------------------------	--	-----------------------	---------------------------------



4 NM Holding Pattern	JIVNA	HUPOX	UYIVE 3 NM to GOXIW	3200	JIVNA
10000 3200	←237°	057°	057°	3.00° TCH 45	1.7 NM to GOXIW
		2600	1800		GOXIW
		6 NM	2.5 NM	1.3 NM	1.7
CATEGORY	A	B	C	D	
LNAV MDA	1380-1	736 (800-1)	1380-2	736 (800-2)	
CIRCLING	1380-1	736 (800-1)	1480-2½ 836 (900-2½)	1840-3 1196 (1200-3)	



SE-4, 23 JAN 2025 to 20 FEB 2025

SE-4, 23 JAN 2025 to 20 FEB 2025