

|  |                        |   |             |
|--|------------------------|---|-------------|
| WAAS<br>CH <b>93904</b><br><b>W17A</b> | APP CRS<br><b>167°</b> | Rwy Idg<br>TDZE <b>1864</b><br>Apt Elev <b>1864</b> | <b>5000</b> |
|--|------------------------|---|-------------|

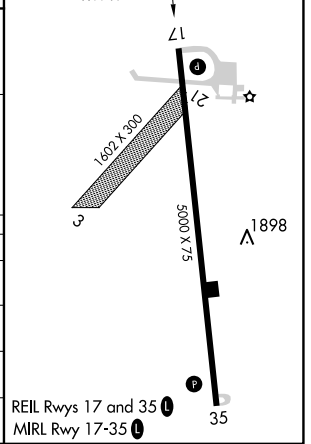
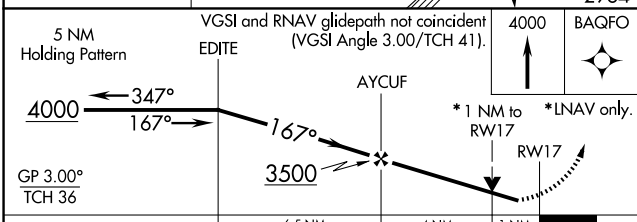
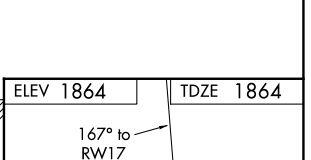
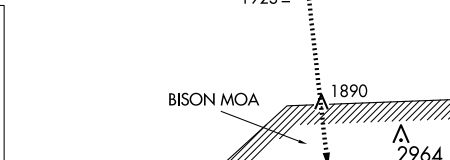
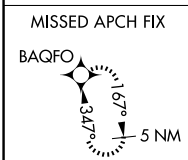
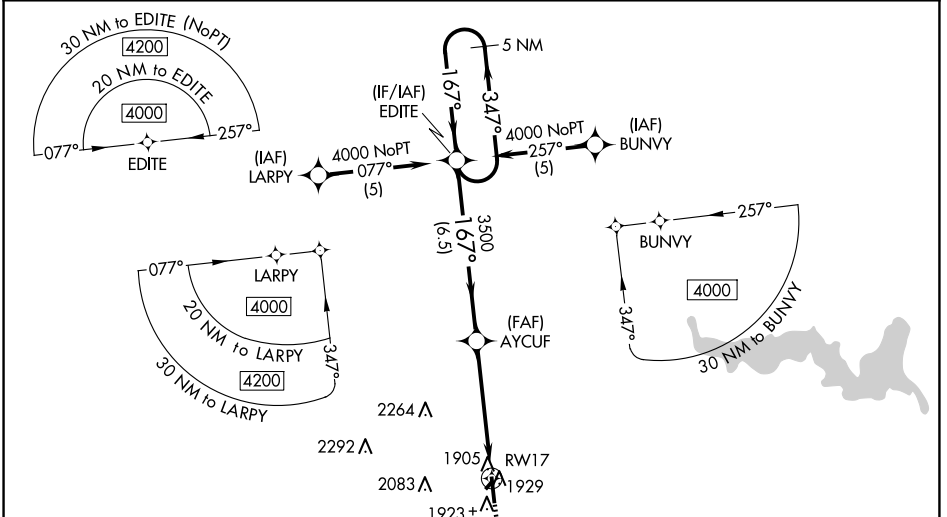
# RNAV (GPS) RWY 17

RUSSELL MUNI (RSL)

**⚠** Baro-VNAV and VDP NA when using Hays altimeter setting. For uncompensated Baro-VNAV systems, LNAV/VNAV NA below -18°C (0°F) or above 54°C (130°F). DME/DME RNP-0.3 NA. Helicopter visibility reduction below ¼ SM NA. When local altimeter setting not received, use Hays altimeter setting: increase LPV DA all Cats to 2186 feet, LNAV/VNAV all Cats DA to 2244 feet and all visibilities ¼ SM; increase all MDA 80 feet and LNAV Cat C and Circling Cat C visibility ¼ SM. Circling NA to Rwys 3 and 21.

MISSED APPROACH:  
Climb to 4000 direct  
BAQFO and hold.

|                        |  |                                 |
|------------------------|--|---------------------------------|
| ASOS<br><b>128.325</b> | KANSAS CITY CENTER<br><b>124.4 322.4</b> | UNICOM<br><b>122.7 (CTAF) 0</b> |
|------------------------|--|---------------------------------|



| CATEGORY     | A                     | B                     | C                       | D  |
|--------------|-----------------------|-----------------------|-------------------------|----|
| LPV DA       | 2117-1                | 253 (300-1)           |                         | NA |
| LNAV/VNAV DA | 2175-1½               | 311 (400-1½)          |                         | NA |
| LNAV MDA     | 2220-1                | 356 (400-1)           |                         | NA |
| CIRCLING     | 2240-1<br>376 (400-1) | 2320-1<br>456 (500-1) | 2620-2¼<br>756 (800-2¼) | NA |

REIL Rwys 17 and 35  
MIRL Rwy 17-35

NC-2, 23 JAN 2025 to 20 FEB 2025

NC-2, 23 JAN 2025 to 20 FEB 2025