

LOC/DME I-LRU 109.3 Chan 30	APP CRS 307°	Rwy ldg 7500 TDZE 4444 Apt Elev 4457
--	------------------------	---

ILS or LOC RWY 30

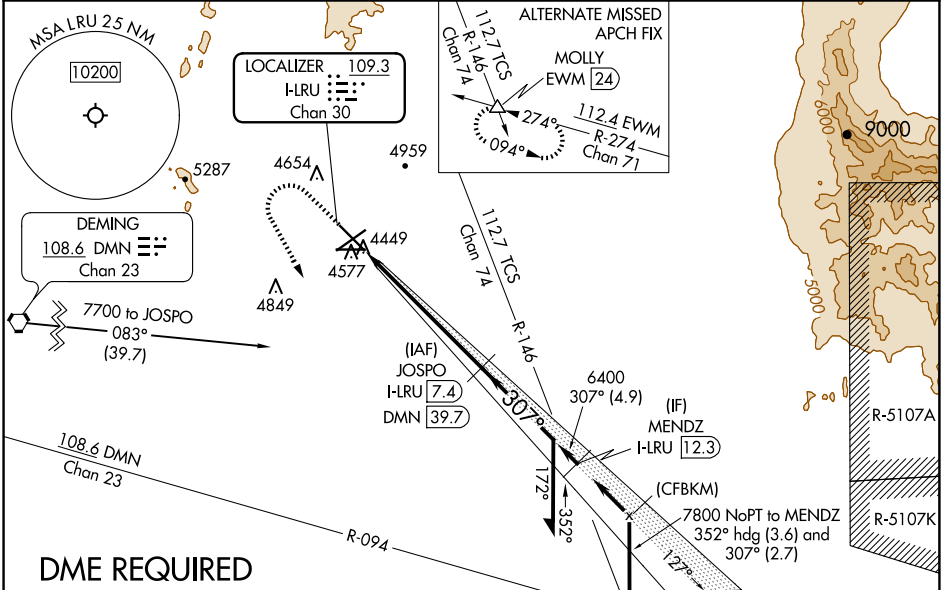
LAS CRUCES INTL(LRU)

NA DME required. When local altimeter setting not received, use Deming altimeter setting: increase DA to 4758 feet and all visibilities $\frac{1}{8}$ mile; increase all MDA 120 feet and visibility Cat C and D $\frac{1}{2}$ mile. VDP NA when using Deming altimeter setting.

MALSR

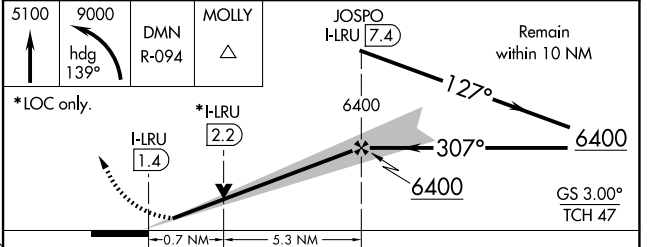
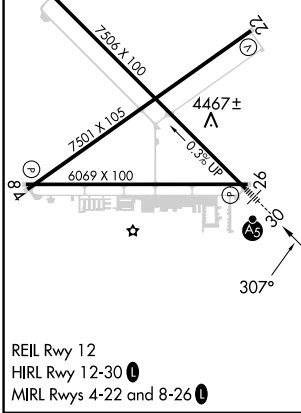
MISSED APPROACH: Climb to 5100 then climbing left turn to 9000 on heading 139° and on DMN VORTAC R-094 to MOLLY INT/DMN 46.7 DME and hold, continue climb-in-hold to 9000.

AWOS-3 119.025	ALBUQUERQUE CENTER 128.2 285.5	UNICOM 122.7 (CTAF)
--------------------------	--	-------------------------------



ELEV 4457	D	TDZE 4444
------------------	----------	------------------

Procedure NA for arrivals at MOLLY on V611 southeast bound.



CATEGORY	A	B	C	D
S-ILS 30	4644- $\frac{1}{2}$ 200 (200- $\frac{1}{2}$)			
S-LOC 30	4720- $\frac{1}{2}$ 276 (300- $\frac{1}{2}$)			
C CIRCLING	4900-1 443 (500-1)	5040-1 583 (600-1)	5320-2 $\frac{1}{2}$ 863 (900-2 $\frac{1}{2}$)	5320-2 $\frac{3}{4}$ 863 (900-2 $\frac{3}{4}$)

SW-1, 23 JAN 2025 to 20 FEB 2025

SW-1, 23 JAN 2025 to 20 FEB 2025