

WAAS CH <b>63136</b> <b>W30A</b>	APP CRS <b>307°</b>	Rwy Idg TDZE Apt Elev	<b>7500</b> <b>4444</b> <b>4457</b>
--	------------------------	-----------------------------	---

# RNAV (GPS) RWY 30

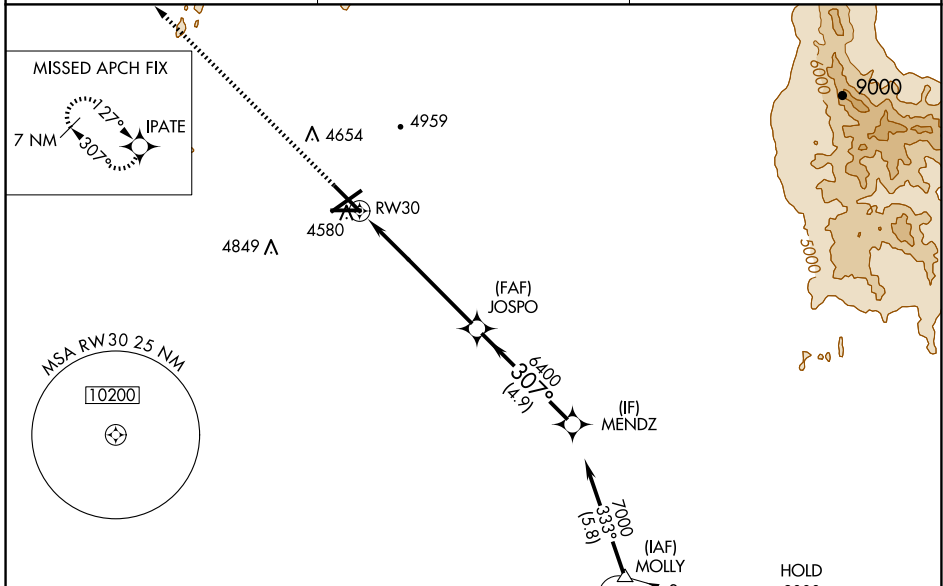
LAS CRUCES INTL (LRU)

**⚠** For uncompensated Baro-VNAV systems, LNAV/VNAV NA below -12°C (11°F) or above 51°C (124°F). DME/DME RNP-0.3 NA. Baro-VNAV and VDP NA when using Deming altimeter setting. When local altimeter setting not received, use Deming altimeter setting; increase LPV DA to 4758 feet, LNAV/VNAV DA to 4863 feet and all visibilities  $\frac{3}{8}$  mile; increase all MDA 120 feet and visibility Cat C and D  $\frac{1}{2}$  mile.

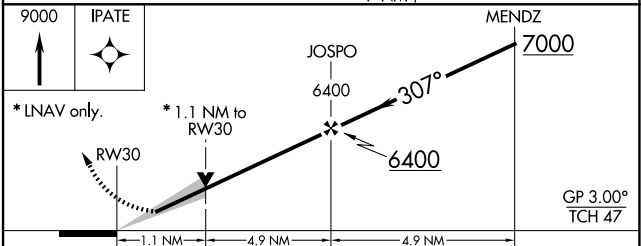
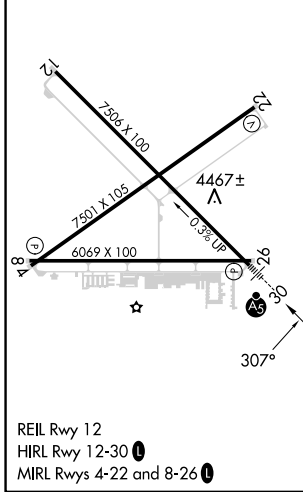
**MALSR**

**MISSED APPROACH:** Climb to 9000 direct IPATE and hold, continue climb-in-hold to 9000.

AWOS-3 <b>119.025</b>	ALBUQUERQUE CENTER <b>128.2 285.5</b>	UNICOM <b>122.7 (CTAF)</b>
--------------------------	--	-------------------------------



ELEV <b>4457</b>	<b>D</b>	TDZE <b>4444</b>
------------------	----------	------------------



CATEGORY	A	B	C	D
LPV DA		4644- $\frac{1}{2}$	200 (200- $\frac{1}{2}$ )	
LNAV/VNAV DA		4749- $\frac{5}{8}$	305 (300- $\frac{5}{8}$ )	
LNAV MDA	4840- $\frac{1}{2}$	396 (400- $\frac{1}{2}$ )	4840- $\frac{5}{8}$	396 (400- $\frac{5}{8}$ )
<b>C</b> CIRCLING	4900-1 443 (500-1)	5040-1 583 (600-1)	5320-2 $\frac{1}{2}$ 863 (900-2 $\frac{1}{2}$ )	5320-2 $\frac{3}{4}$ 863 (900-2 $\frac{3}{4}$ )

SW-1, 23 JAN 2025 to 20 FEB 2025

SW-1, 23 JAN 2025 to 20 FEB 2025