

PALESTINE, TEXAS

AL-871 (FAA)

22083

VOR/DME FZT <b>111.4</b> Chan <b>51</b>	APP CRS <b>202°</b>	Rwy Idg TDZE <b>416</b> Apt Elev <b>423</b>	<b>5005</b>
---	------------------------	---	-------------

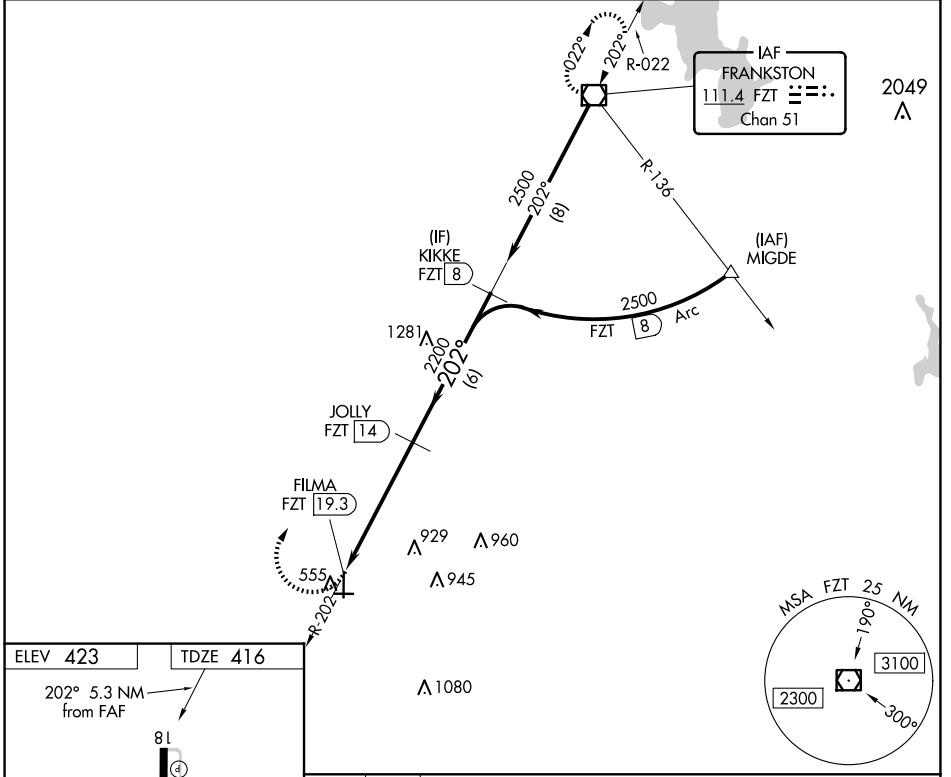
**VOR RWY 18**  
PALESTINE MUNI (PSN)

DME required.

▼  
▲ NA Rwy 18 helicopter visibility reduction below ¾ SM NA.

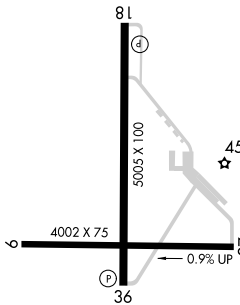
MISSING APPROACH: Climbing right turn to 2500 direct FZT VOR/DME and hold.

AWOS-3PT <b>118.025</b>	FORT WORTH CENTER <b>135.25 265.1</b>	UNICOM <b>122.7 (CTAF)</b> ☹
----------------------------	--	---------------------------------

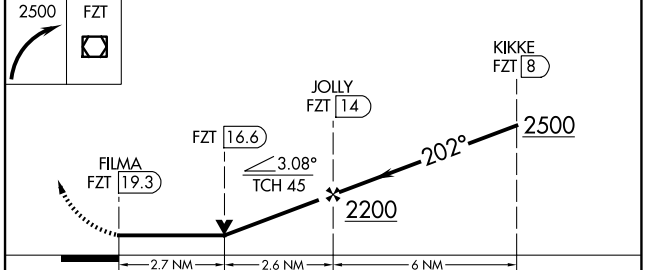


ELEV <b>423</b>	TDZE <b>416</b>
-----------------	-----------------

202° 5.3 NM  
from FAF



REIL Rwy 36  
MIRL Rwy 18-36 and 9-27 ☹



CATEGORY	A	B	C	D
S-18	1320-1¼	904 (900-1¼)	1320-2½	904 (900-2½)
☹ CIRCLING	1320-1¼	897 (900-1¼)	1360-2¾ 937 (1000-2¾)	1360-3 937 (1000-3)

PALESTINE, TEXAS  
Amdt 6 15AUG19

31°47'N - 95°42'W

PALESTINE MUNI (PSN)  
**VOR RWY 18**

SC-5, 23 JAN 2025 to 20 FEB 2025

SC-5, 23 JAN 2025 to 20 FEB 2025