

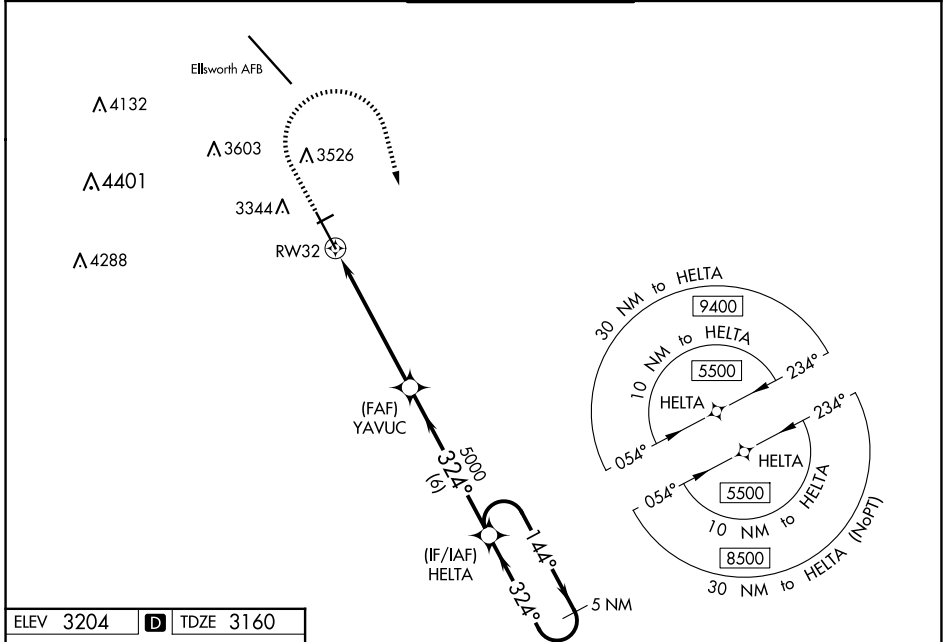
WAAS CH 93717 W32A	APP CRS 324°	Rwy Idg TDZE Apt Elev	8701 3160 3204
--	------------------------	-----------------------------	---

RNAV (GPS) RWY 32

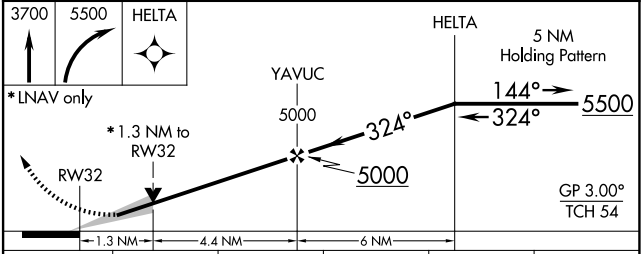
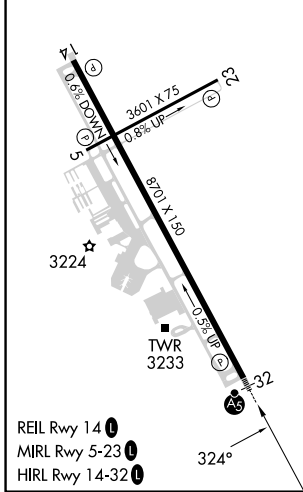
RAPID CITY RGNL (R.A.P)

<p>⚠ For uncompensated Baro-VNAV systems, LNAV/VNAV NA below -24°C (-11°F) or above 51°C (125°F). DME/DME RNP-0.3 NA. For inop ALS, increase LPV Cat E visibility to RVR 4000, LNAV/VNAV all Cats to RVR 4500 and LNAV Cat E to 1 3/8 SM. # RVR 1800 authorized with use of FD or AP or HUD to DA.</p>	<p>MALSR</p>	<p>MISSED APPROACH: Climb to 3700 then climbing right turn to 5500 direct HELTA and hold.</p>
	<p>⚠</p>	

ASOS 118.525	ELLSWORTH APP CON * 119.5 259.1	RAPID CITY TOWER * 125.85 (CTAF) 0 257.8	GND CON 121.9	UNICOM 122.95
------------------------	---	--	-------------------------	-------------------------



ELEV 3204	D	TDZE 3160
-----------	----------	-----------



CATEGORY	A	B	C	D	E
LPV DA#	3360/24		200 (200-1/2)		
LNAV/VNAV DA	3410/24		250 (300-1/2)		
LNAV MDA	3620/24		3620/45		460 (500-7/8)
C CIRCLING	3660-1 456 (500-1)	3840-1 636 (700-1)	3860-1 3/4 656 (700-1 3/4)	3940-2 1/4 736 (800-2 1/4)	3960-2 3/4 756 (800-2 3/4)

NC-1, 23 JAN 2025 to 20 FEB 2025

NC-1, 23 JAN 2025 to 20 FEB 2025