

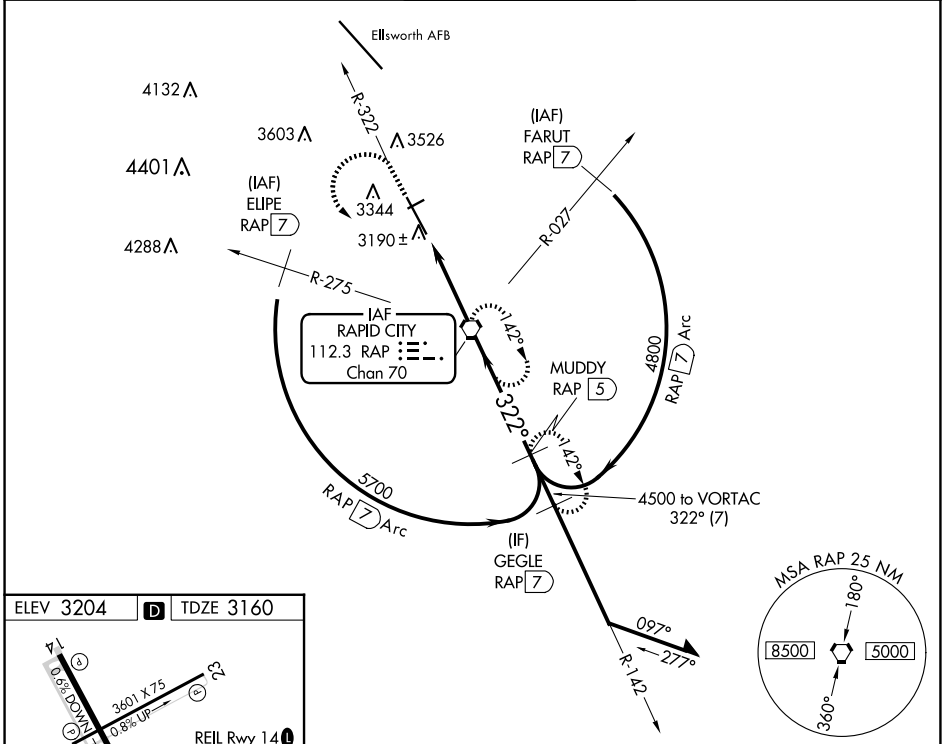
VORTAC RAP 112.3 Chan 70	APP CRS 322°	Rwy Idg 8701 TDZE 3160 Apt Elev 3204
--	------------------------	---

VOR or TACAN RWY 32

RAPID CITY RGNL (R.A.P)

<p>⚠</p> <p>For inoperative ALS, increase S-32 all Cats visibility to 1 SM.</p>	<p>MALSR</p>	<p>MISSED APPROACH: Climb to 5500 on RAP R-322 then left turn direct RAP VORTAC and hold. (TACAN aircraft continue on RAP R-142 to MUDDY/RAP 5 DME and hold SE, RT, 322° inbound.)</p>

ASOS 118.525	ELLSWORTH APP CON ★ 119.5 259.1	RAPID CITY TOWER ★ 125.85 (CTAF) 0 257.8	GND CON 121.9	UNICOM 122.95
------------------------	---	--	-------------------------	-------------------------



ELEV 3204	D	TDZE 3160
-----------	----------	-----------

REIL Rwy 14

MIRL Rwy 5-23

HIRL Rwy 14-32

TWR 3233

322°

3224

322°

FAF to MAP 3.8 NM

Knots	60	90	120	150	180
Min:Sec	3:48	2:32	1:54	1:31	1:16

5500	RAP	VGSI and descent angles not coincident (VGSI Angle 3.00/TCH 54). Remain within 15 NM			
RAP R-322	RAP VORTAC				
RAP 3	RAP 3.8	142°			
		322°			
		4500			
		3.26° TCH 54			
		0.8 3 NM			
CATEGORY	A	B	C	D	E
S-32	3440/40 280 (300-¾)				
C CIRCLING	3660-1 456 (500-1)	3840-1 636 (700-1)	3860-1¾ 656 (700-1¾)	3940-2¼ 736 (700-2¼)	3960-2¾ 756 (800-2¾)

NC-1, 23 JAN 2025 to 20 FEB 2025

NC-1, 23 JAN 2025 to 20 FEB 2025