

LOC/DME I-CMX <b>110.3</b> Chan <b>40</b>	APP CRS <b>133°</b>	Rwy Idg <b>6501</b> TDZE <b>1095</b> Apt Elev <b>1095</b>
---	------------------------	---

# LOC BC RWY 14

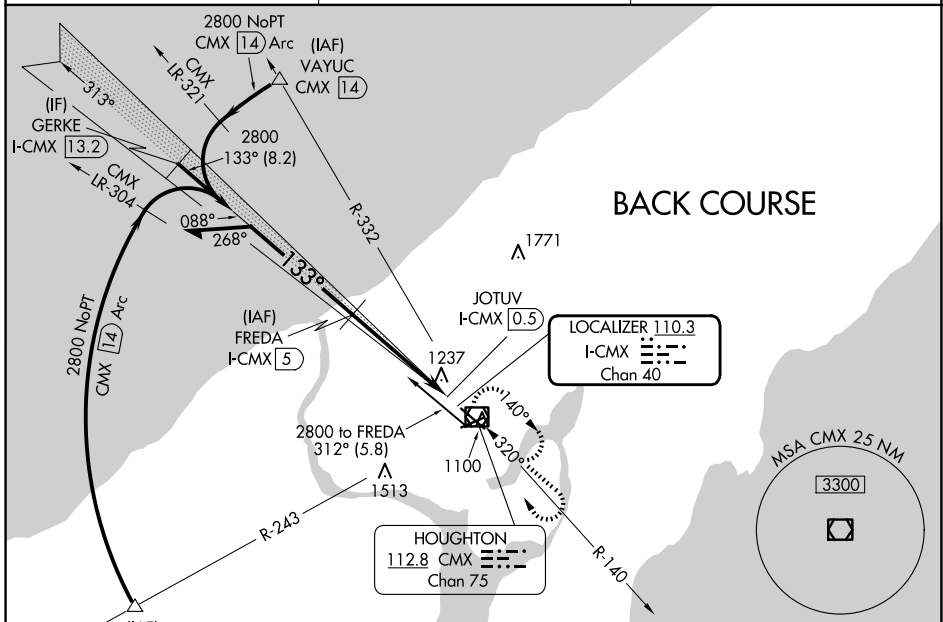
HOUGHTON COUNTY MEML (CMX)

DME required.

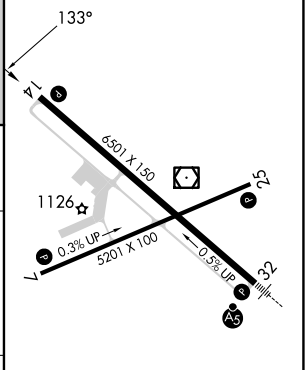
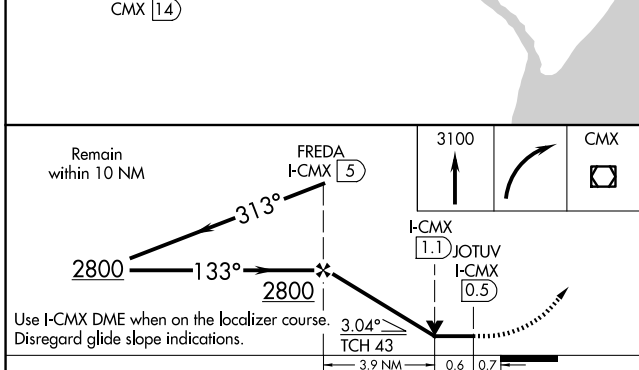
**⚠** Rwy 14 helicopter visibility reduction below 3/4 SM NA.  
Activate MIRLS Rwy 7-25 - CTAF.

MISSED APPROACH: Climb to 3100 then right turn direct CMX VOR/DME and hold.

ASOS <b>125.675</b>	MINNEAPOLIS CENTER <b>133.55 379.1</b>	UNICOM <b>122.7 (CTAF) 0</b>
------------------------	---	---------------------------------



ELEV 1095	<b>D</b> TDZE 1095
-----------	--------------------



CATEGORY	A	B	C	D
S- LOC 14	1540-1	445 (500-1)	1540-1 1/4 445 (500-1 1/4)	1540-1 1/2 445 (500-1 1/2)
<b>C</b> CIRCLING	1620-1 525 (600-1)	1660-1 565 (600-1)	1700-1 3/4 605 (700-1 3/4)	1820-2 1/4 725 (800-2 1/4)

MIRL Rwy 7-25 **0**

REIL Rwys 7, 14 and 25 **0**

HIRL Rwy 14-32 **0**

EC-1, 23 JAN 2025 to 20 FEB 2025

EC-1, 23 JAN 2025 to 20 FEB 2025