

WAAS CH 93533 W14A	APP CRS 133°	Rwy Idg TDZE Apt Elev	6501 1095 1095
--	------------------------	-----------------------------	---

RNAV (GPS) RWY 14

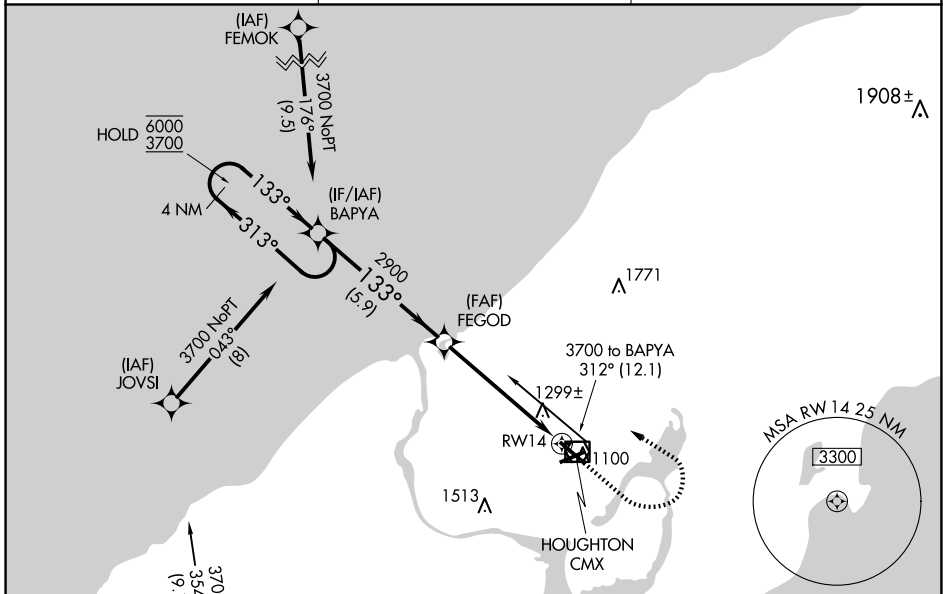
HOUGHTON COUNTY MEML (CMX)

RNP APCH - GPS.

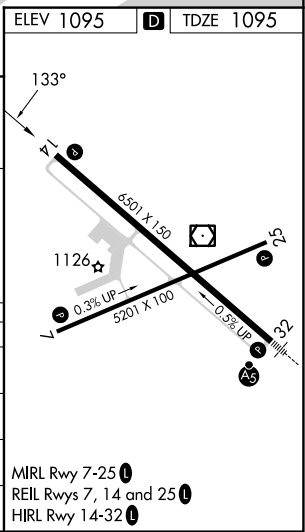
⚠ Rwy 14 helicopter visibility reduction below ¾ SM NA.
For uncompensated Baro-VNAV systems,
LNAV/VNAV NA below -21°C or above 54°C.

MISSED APPROACH: Climb to 2400 then climbing left turn to 3700 direct BAPYA and hold.

ASOS 125,675	MINNEAPOLIS CENTER 133.55 379.1	UNICOM 122.7 (CTAF)
------------------------	---	-------------------------------



ELEV 1095 D TDZE 1095				
4 NM Holding Pattern				
VGSI and RNAV glidepath not coincident (VGSI Angle 3.00/TCH 43).				
CATEGORY	A	B	C	D
LPV DA		1414-7/8	319 (400-7/8)	
LNAV/VNAV DA		1626-1 1/2	531 (600-1 1/2)	
LNAV MDA	1560-1	465 (500-1)	1560-1 3/8	465 (500-1 3/8)
C CIRCLING	1620-1 525 (600-1)	1660-1 565 (600-1)	1700-1 3/4 605 (700-1 3/4)	1820-2 1/4 725 (800-2 1/4)



MIRL Rwy 7-25 **Ⓡ**
REIL Rws 7, 14 and 25 **Ⓡ**
HIRL Rwy 14-32 **Ⓡ**

EC-1, 23 JAN 2025 to 20 FEB 2025

EC-1, 23 JAN 2025 to 20 FEB 2025